



Ellery Road, SE19
£1,650pcm

0208 702 9333
pedderproperty.com

pedder



In general

- 892 sq ft / 82.9 sq m
- Private entrance
- Two double bedrooms
- Lots of fitted storage
- Quiet cul de sac
- Unfurnished
- Available immediately

In detail

A spacious two double bedroom first floor split-level maisonette forming part of a small quiet cul de sac in Crystal Palace to rent.

The accommodation is accessed via a private entrance and totals 892 sq ft / 82.9 sq m arranged over three levels with large windows which allow for lots of natural light. Highlights include a 19ft 3 reception room with a sunny southerly aspect, two double bedrooms with ample fitted storage, a sizeable separate kitchen, a four piece bathroom with a separate walk-in shower, and replacement solid wood flooring.

Ellery Road, SE19 is positioned just off of Harold Road and is primarily served by both Gipsy Hill and Crystal Palace rail links. Also, conveniently placed for a wide of variety of shopping and leisure options at the Triangle.

EPC: D | Council Tax Band: Croydon, band C | HD: £380.76 | SD: £1903.84 | Offered unfurnished | Available immediately



Floorplan

Ellery Road, SE19

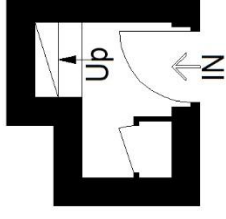
Approximate Gross Internal Area

Ground Floor = 2.1 sq m / 22 sq ft

First Floor = 41.3 sq m / 445 sq ft

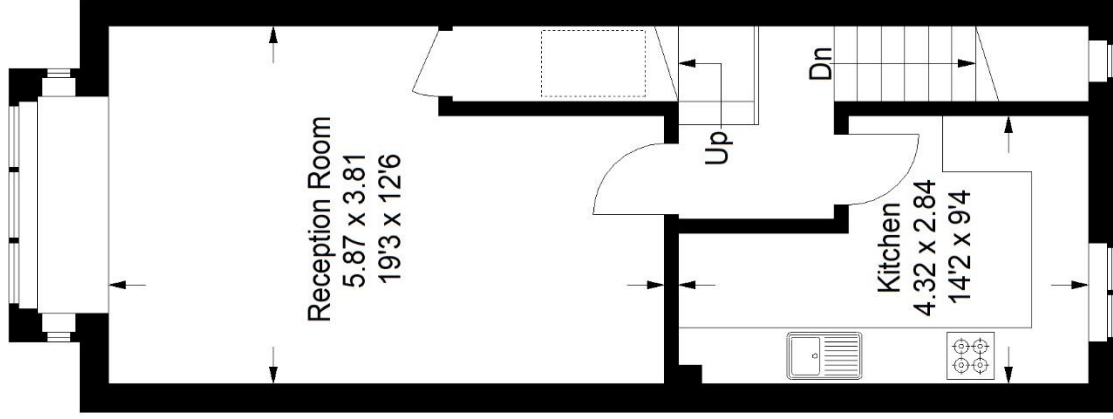
Second Floor = 39.5 sq m / 425 sq ft

Total = 82.9 sq m / 892 sq ft

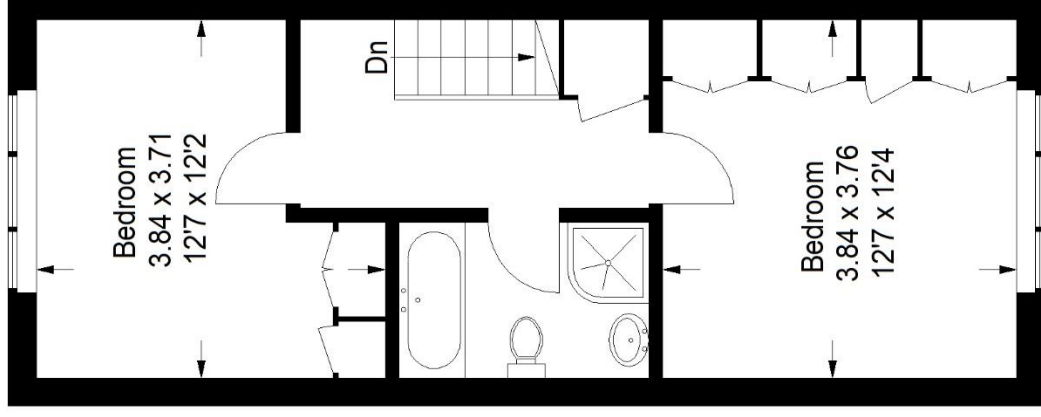


 = Reduced headroom below 1.5 m / 5'0"

Ground Floor



First Floor



Second Floor