



Clive Road, SE21
£3,500 PCM

020 8702 8111
pedderproperty.com

pedder



In general

- A very attractive Victorian family house to let
- Upgraded and modernised to a very high standard
- Five double bedrooms, two bathrooms
- Large 32' double reception room
- Modern integrated kitchen/breakfast room, storage room
- Lovely landscaped southerly aspect rear garden
- Beautifully presented throughout
- Available end of March
- Unfurnished

In detail

A very attractive Victorian family house to let located on this highly sought after residential road in Dulwich.

The property has been upgraded and modernised to a high standard and is beautifully presented throughout.

The accommodation is arranged over three floors and comprises five double bedrooms, two bathrooms, large 32' double reception room, modern integrated kitchen/breakfast room with underfloor heating and small storage room.

Externally to the rear there is a lovely southerly aspect landscaped garden. In the front garden there is a bike storage shed.

Clive Road is well located within easy reach of West Dulwich and Dulwich Village with their parks, outstanding schools (including Dulwich College, Alleyns and James Allens' school), numerous shops, cafes and restaurants.

Excellent rail links to central London are from nearby West Dulwich (London Victoria/London Blackfriars) and West Norwood (London Bridge and London Victoria).

EPC: E | Council Tax Band: F | Available end of March | Unfurnished | Holding Deposit: £807.69 | Security Deposit: £4,038.46 | Please call The Dulwich Village Lettings Team



Floorplan

Clive Road, SE21

Approximate Gross Internal Area
(Excluding Outside Storage)

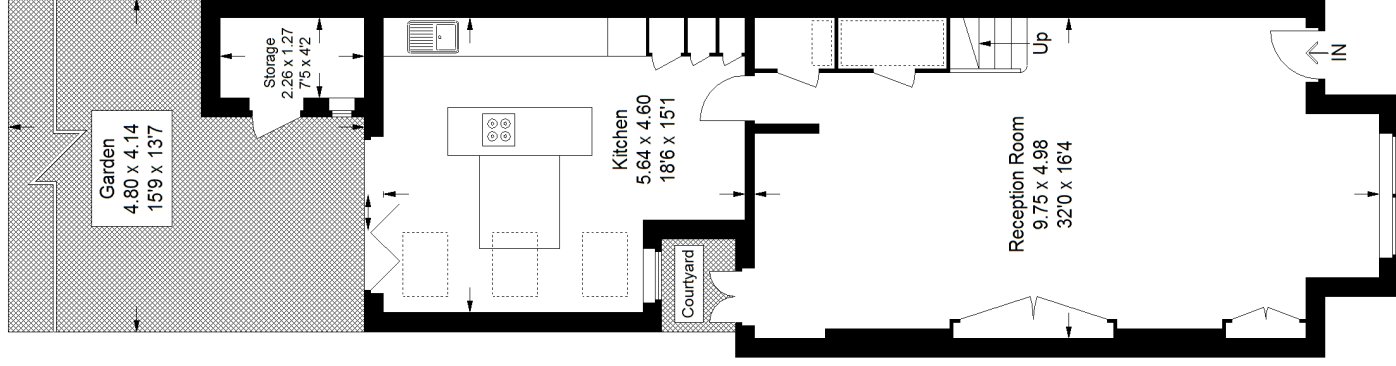
Ground Floor = 70.9 sq m / 763 sq ft

First Floor = 64.2 sq m / 691 sq ft

Second Floor (Excluding Eaves)

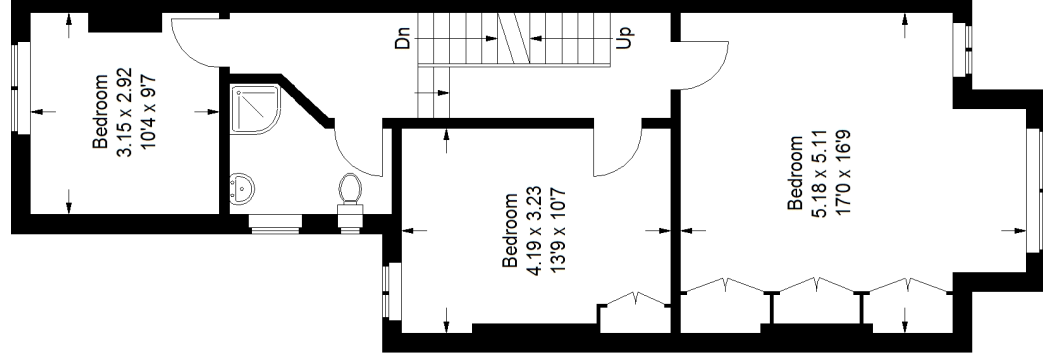
44.5 sq m / 479 sq ft

Total = 179.6 sq m / 1933 sq ft

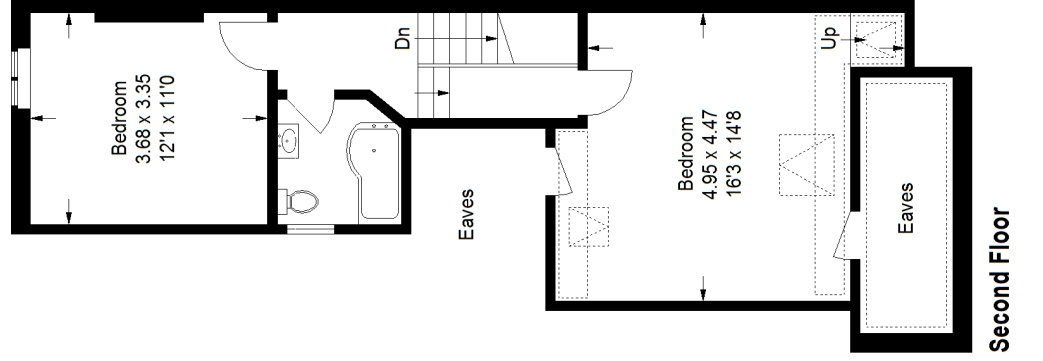


Ground Floor

 = Reduced headroom
below 1.5 m / 50



First Floor



Second Floor

Copyright www.pedderproperty.com © 2022

These plans are for representation purposes only as defined by RICS - Code of Measuring Practice. Not drawn to Scale. Windows and door openings are approximate. Please check all dimensions, shapes and compass bearings before making any decisions reliant upon them.

Pedder Property Ltd trading as Pedder for themselves and for the vendor/landlord of this property whose agents they are, give notice that (1) these particulars do not constitute any part of an offer or contract, (2) all statements contained within these particulars are made without responsibility on the part of Pedder or the vendor/landlord, (3) whilst made in good faith, none of the statements contained within these particulars are to be relied upon as a statement of representation or fact, (4) any intending purchaser/tenant must satisfy him/herself by inspection or otherwise as to the correctness of each of the statements contained within these particulars, (5) the vendor/landlord does not make or give either Pedder or any person in their employment any authority to make or give representation or warranty whatsoever in relation to this property.