

Chiswick High Road.

Chiswick, London, W4

 LAWSONRUTTER

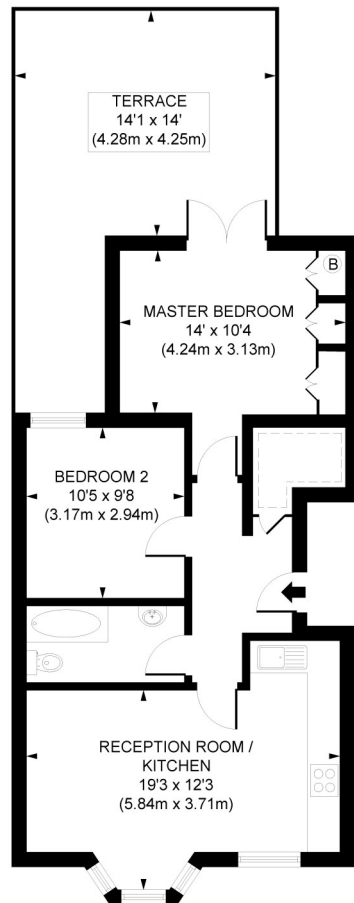




Chiswick High Road

Chiswick, London, W4

Price Guide: £599,950



A superb two double bedroom first floor flat with a fantastic private 14'1 x 14' west facing roof terrace, located in a much sought after location.

The accommodation comprises a 19'3 x 12'3 open plan living room with a well fitted kitchen and wooden flooring, two generous double bedrooms, a stylish bathroom suite and excellent storage throughout.

The flat is ideally located for easy walking access to transport links (Chiswick Park and Turnham Green) with delightful direct views over Turnham Green and there are a host of local shops, bars and restaurants nearby. Leasehold. No onward chain

Superb two double bedroom first floor flat in much sought after location

Open plan living room with a well fitted kitchen and wooden flooring | Two generous bedrooms

Stylish bathroom suite | Excellent storage throughout | No onward chain

Private west facing roof terrace | Easy walking distance to Chiswick Park & Turnham Green stations

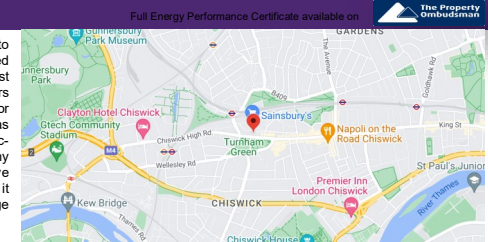
Close to a host of shops, bars & restaurants | 636 Sq. Ft. (59.11 Sq. M.) Leasehold

All viewings by appointment through our **Hammersmith Office**:

T: 020 7385 7000
E: hammersmith@lawsonrutter.com

192 Fulham Palace Road, London W6 9PA

In accordance with the Property Misdescription Act 1991, we wish to emphasise that the information given in these particulars is intended to help you decide whether you wish to view this property. Whilst every care is taken to ensure the accuracy of these particulars please note that all measurements are approximate and we are, for the accuracy of other information, reliant on what the seller has provided. We strongly recommend that you rely on your own inspections and those of your advisors to establish the details of any aspects which are of particular importance. Please note that we have not undertaken any survey of the property or the appliances within it and the buyer must rely on their own investigations prior to exchange of contracts.



Chiswick High Road, W4
Approximate Gross Internal Area
59.11 SQ.M / 636 SQ.FT

KEY: *Restricted Head Height*

Illustration for identification purposes only. Not to scale.
Floor Plan Drawn According To RICS Guidelines.

