



Sherwood Court, Highwood Close, SE22
OIEO £375,000

0208 702 8222
pedderproperty.com

pedder



In general

- Two bedrooms
- Modern, purpose-built apartment
- Recently redecorated
- Hallway storage
- Allocated off-street parking
- CHAIN FREE

In detail

CHAIN FREE

Two-bedroom purpose-built apartment in this private development ideally located between Forest Hill and East Dulwich.

Boasting over 575 Sq Ft of internal space, the ground floor apartment enjoys a 14-ft reception room with an attached fitted kitchen, a modern bathroom and two reasonable bedrooms. The property has been recently redecorated and is offered with vacant possession.

Highwood Close offers enviable access to The City and West End from West Dulwich station (1.2 miles) and Forest Hill station (0.6 miles) as well as strong bus and cycle connections through the neighbouring Dulwich Village, Herne Hill and Peckham.

There are an array of bars, restaurants and independent shops on Lordship Lane and in the Village as well as gorgeous parks, green spaces and woods.

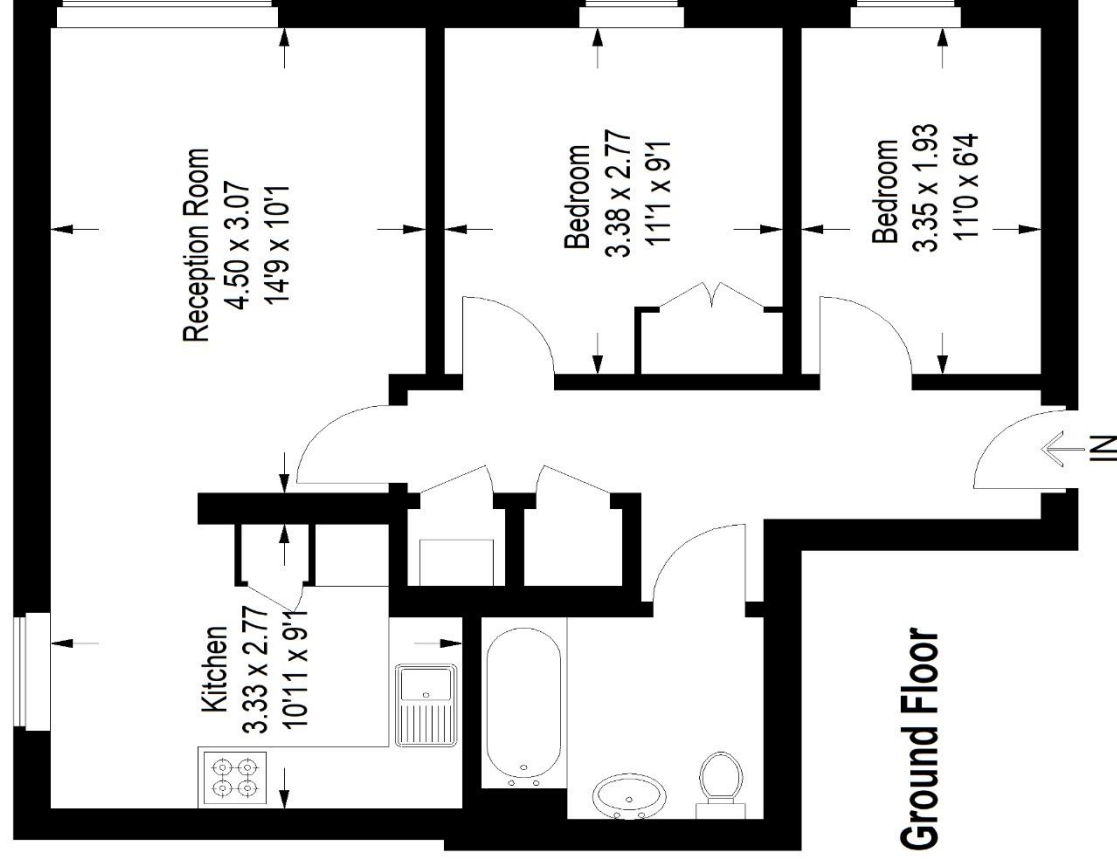
EPC: D | Council Tax Band: C | Lease: 132 years remaining | SC: £178.96 per month | GR: £300 pa | Buildings Insurance: £ n/a



Floorplan

Sherwood Court, SE22

Approximate Gross Internal Area
53.8 sq m / 579 sq ft



Copyright www.pedderproperty.com © 2023
 These plans are for representation purposes only as defined by
 RICS - Code of Measuring Practice. Not drawn to Scale. Windows
 and door openings are approximate. Please check all dimensions,
 shapes and compass bearings before making any decisions reliant
 upon them.

Score	Energy rating	Current	Potential
92+	A		
81-91	B		
69-80	C		
55-68	D	63 D	80 C
39-54	E		
21-38	F		
1-20	G		

Pedder Property Ltd trading as Pedder for themselves and for the vendor/landlord of this property whose agents they are, give notice that (1) these particulars do not constitute any part of an offer or contract, (2) all statements contained within these particulars are made without responsibility on the part of Pedder or the vendor/landlord, (3) whilst made in good faith, none of the statements contained within these particulars are to be relied upon as a statement of representation or fact, (4) any intending purchaser/tenant must satisfy him/herself by inspection or otherwise as to the correctness of each of the statements contained within these particulars, (5) the vendor/landlord does not make or give either Pedder or any person in their employment any authority to make or give representation or warranty whatsoever in relation to this property.