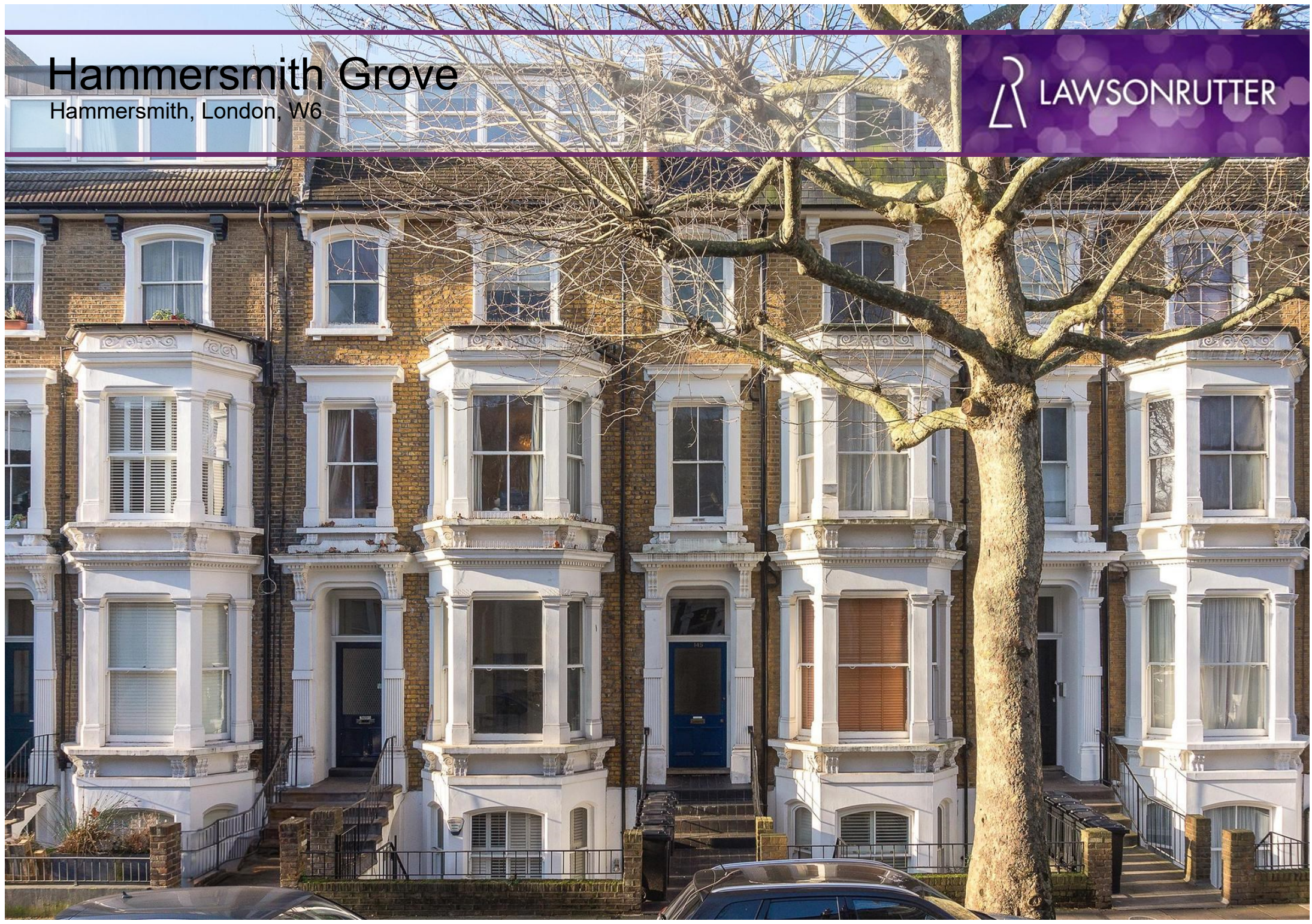


Hammersmith Grove

Hammersmith, London, W6





Hammersmith Grove

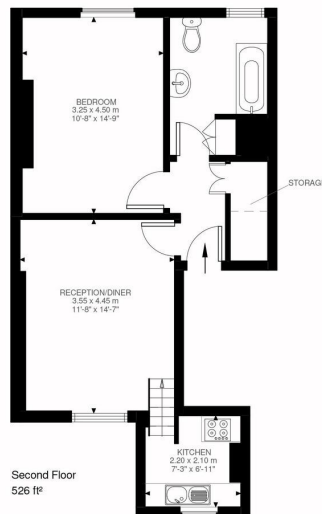
Hammersmith, London, W6

Price Guide: £475,000



An extremely spacious one bedroom period conversion flat measuring 526 sq. ft. located in a highly sought after location within a short walk to Hammersmith underground station. The accommodation comprises a 14'7 x 11'8 reception room, 14'9 x 10'8 bedroom, fully fitted kitchen and a large modern white bathroom suite.

This is an ideal purchase for a first time buyer or investor. Hammersmith Grove is a residential, tree lined road located 2 minutes from a popular parade boasting local cafes and shops as well as The Grove Tavern and Brackenbury Wine Rooms. The shops and cafes of Brackenbury Village are also a short walk as are the amenities of Westfield Shopping Centre and the green spaces of Brook Green and Ravenscourt Park. No onward chain. Share of Freehold.



Second Floor
526 ft²

Hammersmith Grove, W6
Approximate Gross Internal Area
48.84 SQ.M / 526 SQ.FT

KEY: CH = Ceiling Height
Restricted Head Height

Illustration for identification purposes only. Not to scale.
Floor Plan Drawn According To RIGS Guidelines.

Extremely spacious one bedroom period conversion flat in tree lined residential road

Highly sought after location | Reception room | Fully fitted kitchen | Large modern bathroom

Ideal first time buy/investment | Short walk to Hammersmith station & Westfield | No onward chain

Close to transport & a variety of amenities | 526 Sq. Ft. (48.84 Sq. M.) Share of Freehold

All viewings by appointment through our **Hammersmith Office**:

T: 020 7385 7000
E: hammersmith@lawsonrutter.com

192 Fulham Palace Road, London W6 9PA

In accordance with the Property Misdescription Act 1991, we wish to emphasise that the information given in these particulars is intended to help you decide whether you wish to view this property. Whilst every care is taken to ensure the accuracy of these particulars please note that all measurements are approximate and we are, for the accuracy of other information, reliant on what the seller has provided. We strongly recommend that you rely on your own inspections and those of your advisors to establish the details of any aspects which are of particular importance. Please note that we have not undertaken any survey of the property or the appliances within it and the buyer must rely on their own investigations prior to exchange of contracts.

