



Archdale Road, SE22
£1,250,000

0208 702 8222
[pedderproperty.com](https://www.pedderproperty.com)

pedder



In general

- Four bedrooms
- Two bathrooms
- Desirable, residential street
- Excellent Schools
- Good condition throughout
- Onward chain complete

In detail

CHAIN COMPLETE – Stunning, charming and enviably-located four-bedroom Victorian mid-terrace house in the heart of East Dulwich.

Boasting over 1,300 Sq Ft of internal space, this gorgeous family home has been lovingly extended and modernised by the current owners who are relocating nearby. There is a vibrant 18-ft kitchen-breakfast room that opens out through bi-folding doors onto the well-maintained 28-ft garden with two comfortable patio areas for hosting and entertaining. There are two separate reception rooms connected by panel doors and a feature fireplace.

Upstairs are three comfortable doubles, an additional fourth bedroom or study, the modern family bathroom and an off-suite shower room in the loft.

Archdale Road offers easy access to the independent shops, bars and restaurants of Lordship Lane and North Cross Road as well as the parks, green spaces and excellent primary and secondary schools. There are strong connections into The City and West End from East Dulwich station (0.5 miles) and Peckham Rye station (1.1 miles) as well as bus/cycle routes through the neighbouring Dulwich Village, Herne Hill and Camberwell.

EPC: C | Council Tax Band: E



Floorplan

Archdale Road, SE22

Approximate Gross Internal Area

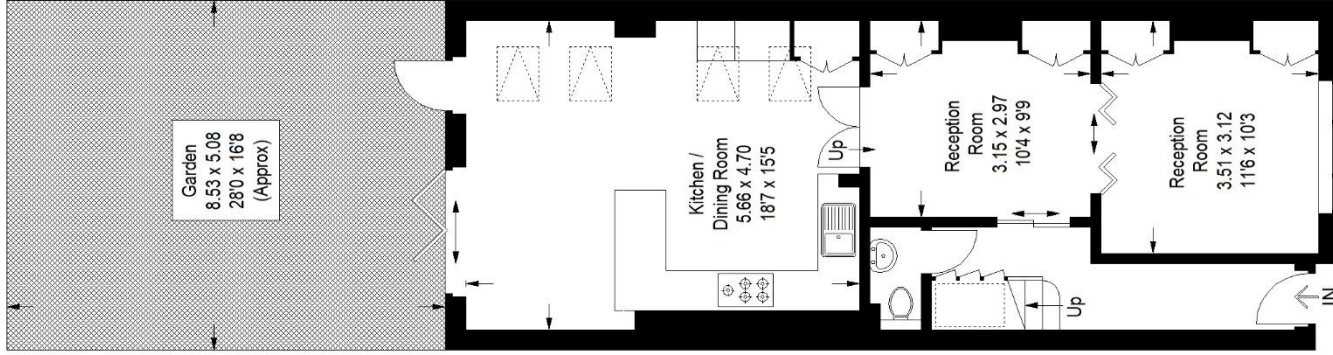
Ground Floor = 57.8 sq m / 622 sq ft

First Floor = 38.0 sq m / 409 sq ft

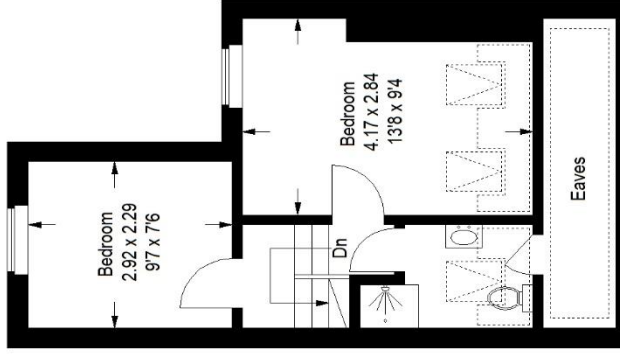
Second Floor (Excluding Eaves)

27.3 sq m / 294 sq ft

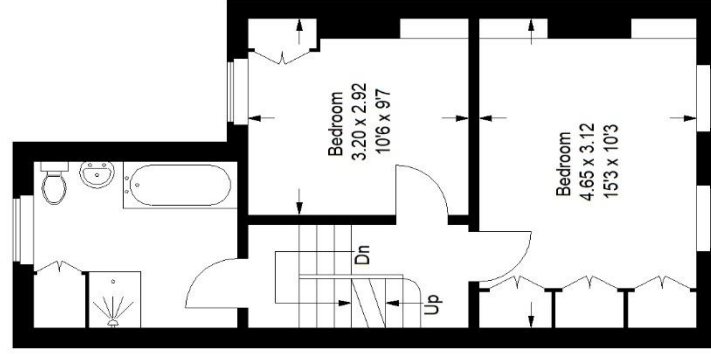
Total = 123.1 sq m / 1325 sq ft



Ground Floor



Second Floor



First Floor

= Reduced headroom below 1.5 m / 5'0

Copyright www.pedderproperty.com © 2024

These plans are for representation purposes only as defined by RICS - Code of Measuring Practice. Not drawn to Scale. Windows and door openings are approximate. Please check all dimensions, shapes and compass bearings before making any decisions reliant upon them.



Pedder Property Ltd trading as Pedder for themselves and for the vendor/landlord of this property whose agents they are, give notice that (1) these particulars do not constitute any part of an offer or contract, (2) all statements contained within these particulars are made without responsibility on the part of Pedder or the vendor/landlord, (3) whilst made in good faith, none of the statements contained within these particulars are to be relied upon as a statement of representation or fact, (4) any intending purchaser/tenant must satisfy him/herself by inspection or otherwise as to the correctness of each of the statements contained within these particulars, (5) the vendor/landlord does not make or give either Pedder or any person in their employment any authority to make or give representation or warranty whatsoever in relation to this property.