



Park Hall Road, SE21
Guide £2,250,000

020 8702 8111
[pedderproperty.com](https://www.pedderproperty.com)

pedder



In general

- A substantial double fronted Victorian house for sale
- Exceptionally spacious - 3392 sq ft
- Five double bedrooms, two bathrooms
- Two reception rooms
- Fitted kitchen open-plan to a dining room
- Conservatory, utility room
- Downstairs cloakroom, cellar
- Garage, large drive providing off street parking for several vehicles
- Delightful, mature south facing garden measuring 99'
- Beautifully presented throughout

In detail

A substantial double fronted Victorian house for sale located on this popular residential road in Dulwich.

The property has been upgraded and modernised by the current owner creating a beautifully presented interior. With a gross internal area of 3392 sq ft the property offers exceptionally spacious accommodation arranged over three floors comprising five double bedrooms, two bathrooms (one en-suite), two reception rooms, dining room, fitted kitchen, conservatory, utility room, downstairs cloakroom, cellar and garage. Externally to the front there is a large drive providing off street parking for several vehicles and to the rear a delightful mature, south facing garden measuring 99'.

Park Hall Road is well located within easy reach of West Dulwich and Dulwich Village with their popular parks, numerous cafes and restaurants and renowned independent schools including Dulwich College, Alleyn's and James Allens Girls School. Excellent rail links to central London are from nearby West Dulwich (London Victoria and London Blackfriars) and Tulse Hill (London Bridge, London Blackfriars and St Pancras).

An internal viewing of this fine family home is advised.

EPC: E | Council Tax Band: G



Floorplan

Park Hall Road, SE21

Approximate Gross Internal Area

Cellar = 20.6 sq m / 222 sq ft

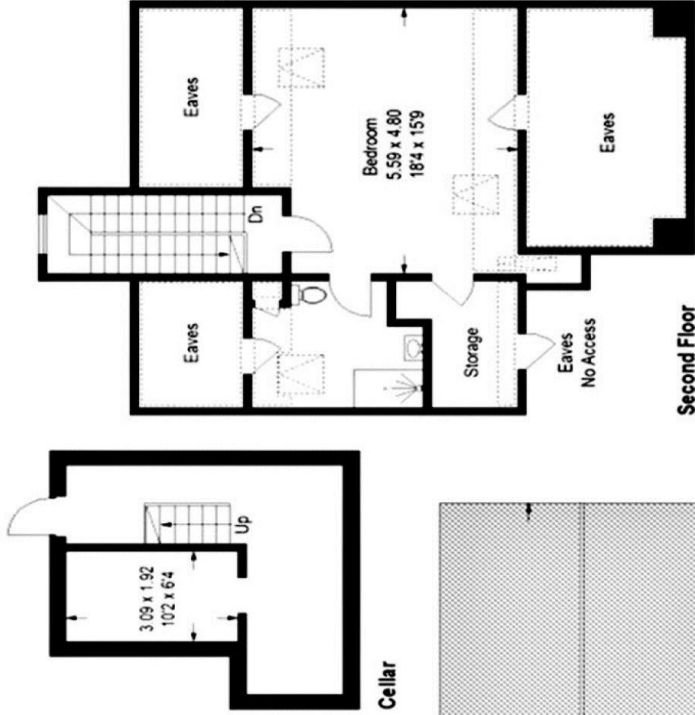
Ground Floor = 122.3 sq m / 1317 sq ft

First Floor = 100.0 sq m / 1076 sq ft

Second Floor (Excluding Eaves) = 46.9 sq m / 505 sq ft

Garage = 25.3 sq m / 272 sq ft

Total = 316.1 sq m / 3392 sq ft

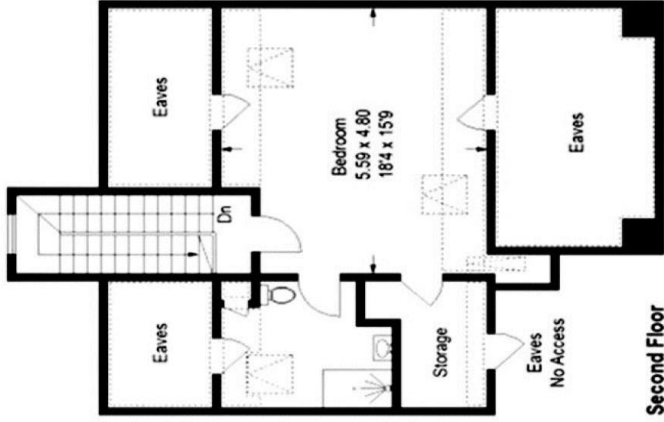


Cellar

■ Reduced headroom below 1.5 m / 50



Ground Floor



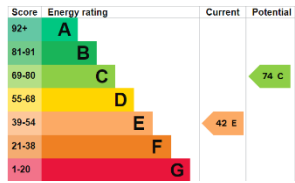
Second Floor



First Floor

Copyright www.pedderproperty.com © 2023

These plans are for representation purposes only as defined by RICS - Code of Measuring Practice. Not drawn to Scale. Windows and door openings are approximate. Please check all dimensions, shapes and compass bearings before making any decisions reliant upon them.



Pedder Property Ltd trading as Pedder for themselves and for the vendor/landlord of this property whose agents they are, give notice that (1) these particulars do not constitute any part of an offer or contract, (2) all statements contained within these particulars are made without responsibility on the part of Pedder or the vendor/landlord, (3) whilst made in good faith, none of the statements contained within these particulars are to be relied upon as a statement of representation or fact, (4) any intending purchaser/tenant must satisfy him/herself by inspection or otherwise as to the correctness of each of the statements contained within these particulars, (5) the vendor/landlord does not make or give either Pedder or any person in their employment any authority to make or give representation or warranty whatsoever in relation to this property.