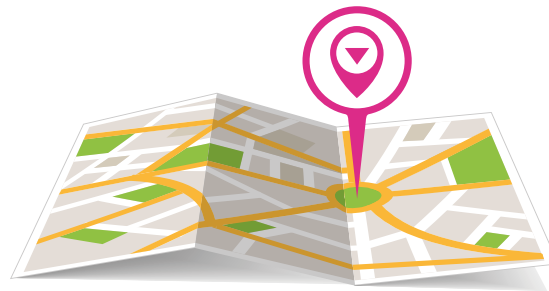


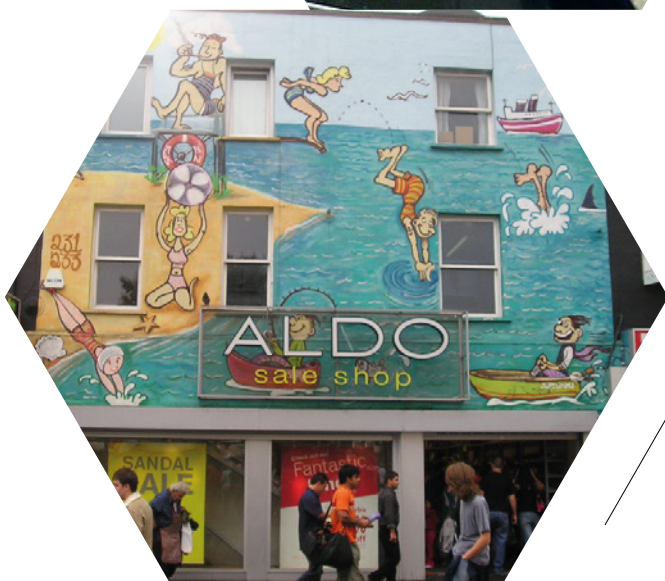
PROPERTY AREA GUIDES



LIVINGSPLACE
ESTATE AGENTS

A GUIDE TO **CAMDEN AREA**





A GUIDE TO CAMDEN AREA

Camden is a dense, bustling, ever-changing hub of activity, and for the world's youth, is the capital's top tourist spot attracting 28 million visitors a year.

Visitors flock to the rabbit warren of markets and food stalls next to Regent's Canal at Camden Lock, stretching down the High Street and up Chalk Farm Road.

The late singer Amy Winehouse is a "patron saint" in the North London area where she lived in Camden Square. Her image pops up on graffiti and her life is celebrated with a statue located in Stables Market – a popular attraction for visitors and fans.

Yet just two streets away lives an entirely different world. Gloucester Crescent is a street where some of the country's leading writers, artists and intellectuals settled in the Fifties and Sixties, and

their lives documented in so many books and plays that it can lay claim to be the most written-about street in London. Over the years, Camden Town has changed beyond recognition. Former industrial buildings have been converted into smart lofts, housing affluent professionals, while run-down period houses have been done up.

Plans are in place to put the finishing touches to Camden Lock Village, a canalside development on the eastern side of Camden Lock. There will be 195 new homes, employment space to rent, revamped Network Railway arches and a canalside market with cafés, restaurants and bars, between three and nine storeys high.

There are plans for over 500 new homes in Camden, ranging from one-bedroom studios to four-bedroom family homes, of which 40 per cent have promised to be affordable.



Camden Market homes over 1,000 shops, street food, stalls, bars, cafes and vendors and occupies the whole of the historic Camden Lock and Stables site.

The market is known for its "tat", but visitors can find handmade jewellery and leather bags, as well as vintage clothing or second-hand watches.

The best restaurants in the area are Gordon Ramsay's York & Albany in Parkway and Michael Nadra in Gloucester Avenue.



**RESTAURANT
& SHOP**

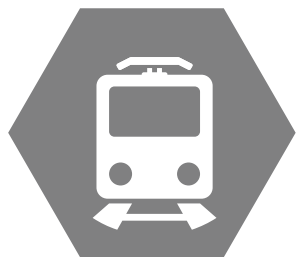


**Camden is famous
for its music scene.**

The Roundhouse in Chalk Farm Road and Koko at the bottom of Camden High Street close to Mornington Crescent Tube station are popular places for music and a good night. Dingwalls has been hosting music events in the market since 1973. The Jazz Café specialises in jazz, soul and reggae. The Electric Ballroom and The Underworld, both in Camden High Street, are both rock venues.



LEISURE



TRANSPORT

Camden Town and Mornington Crescent Underground stations are on the Northern line. Camden Road is on the Overground with direct trains to Stratford.

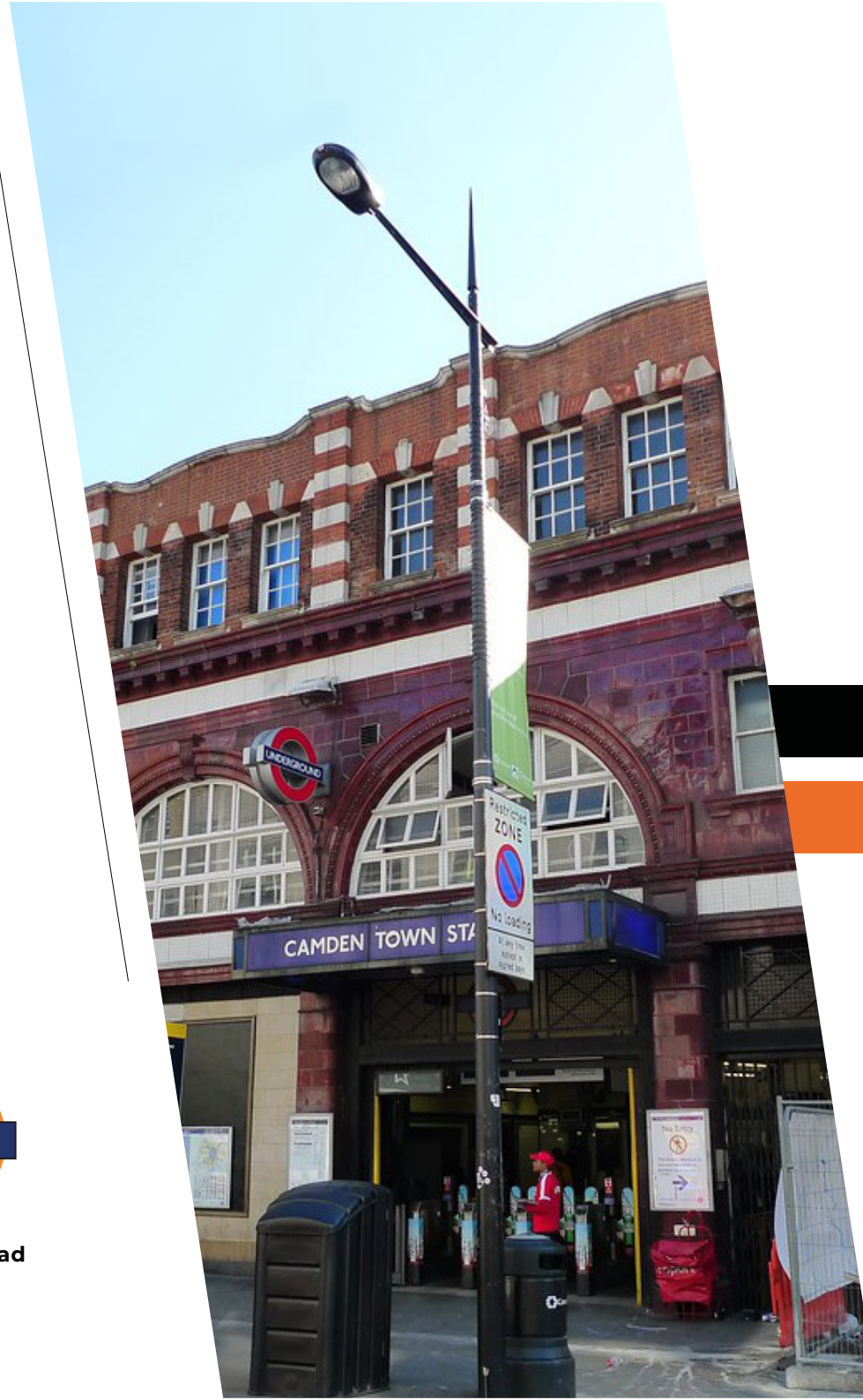
Camden has numerous bus routes day and night, including six 24-hour buses, the 27, 88, 134, 214, C2 and also the No 24, which runs from Hampstead to Pimlico and is London's oldest bus route.



**Mornington Crescent
Camden Town**



Camden Road

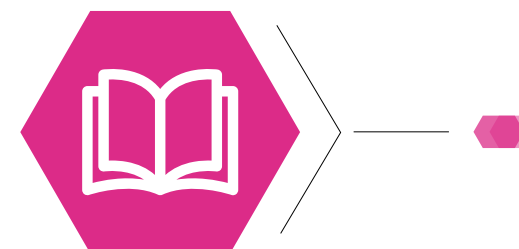


Northern line

overground



SCHOOLS



PRIMARY SCHOOL

Richard Cobden in Camden Street
 Holy Trinity and Saint Silas CofE in Hartland Road
 Primrose Hill in Princess Road
 St Mary and St Pancras CofE in Werrington Road

COMPREHENSIVE

St Marylebone CofE (girls, ages 11 to 18)
 in Marylebone High Street
 Elizabeth Garrett Anderson (girls, ages 11 to 16)
 in Donegal Street in Islington

“GOOD” SCHOOLS

Regent High (co-ed, ages 11 to 18) in Chalton Street
 Maria Fidelis RC (co-ed, ages 11 to 18) in Phoenix Road
 UCL Academy (co-ed, ages 11 to 18) in Adelaide Road
 Acland Burghley (co-ed, ages 11 to 18) in Burghley Road
 Parliament Hill (girls, ages 11 to 18), William Ellis (boys,
 ages 11 to 18) and La Sainte Union RC
 (girls, ages 11 to 18), are all schools in Highgate Road.

PRIVATE

The Cavendish School RC (girls, ages two to 11)
 in Inverness Street
 North Bridge House (co-ed, ages seven to 13)
 in Gloucester Avenue
 The Village School (girls, ages three to 11)
 in Parkhill Road in Belsize Park
 St Christina's RC (girls, ages three to 11 with boys ages
 three to five) in St Edmund's Terrace in St John's Wood
 St John's Wood Pre-Preparatory (co-ed, ages three
 to seven) on the Lord's Roundabout, also in St
 John's Wood
 Trevor-Roberts (co-ed, ages four to 13) in Eton Avenue
 The Hall School (boys, ages five to 13) in Crossfield
 Road in South Hampstead
 The Gower School (co-ed, ages 0 to 11) in Cynthia
 Street in Islington
 Francis Holland (girls, ages 11 to 18) in Clarence
 Gate in Regent's Park is a private secondary
 school





ABOUT US

Living Space Estate Agents is one of North London's leading residential sales, lettings & property management agents. Combined with over 18 years experience in the industry and local area has provided us with the valuable knowledge and enviable reputation as a professional, dedicated and proactive organisation, which looks after its clients interests at all times.

We constantly review the services we provide our clients, to ensure we are at the cutting edge of the industry. We tailor our services to each individual clients needs, where we are able to provide the services they require in helping them to achieve their goals, "a swift letting or sale without all the usual complications and stresses".

RESIDENTIAL
SALES

PROPERTY
MANAGEMENT

RESIDENTIAL
LETTINGS

WE PROVIDE SERVICES



Living Space Estate Agents
105 St Pauls Road Islington
London, N1 2NA

Lettings 0207 354 0505
Sales 0207 354 5005
Management 0207 354 5015

info@lsea.co.uk
www.lsea.co.uk

LIVINGSPLACE
ESTATE AGENTS