



spurhouse

E8
spurhouse

Situated in the creative heart of Hackney, yet only eight minutes by train from the City, Spurhouse is the epitome of modern city living.

A collection of one, two and three bed apartments in London E8.





bedroom

Beautifully styled bedrooms are central to the Spurhouse concept; easy living and relaxed chic combine with contemporary touches and modern convenience to ensure that you can escape the city and unwind in comfort.

Under-floor heating

Full under-floor heating is standard throughout every apartment at Spurhouse.

Fitted carpets

Premium weave carpets in neutral tones with deep underlay for maximum comfort in all master bedrooms.

Decoration

Feature walls painted in a contemporary palette add character and warmth. Fitted wardrobes and skirting in neutral white.



living

A spacious open-plan kitchen/diner/living space is at the heart of all Spurhouse apartments. Flooded with natural light by day, yet warm and homely by night, these ideal social spaces have been beautifully designed to suit every occasion.

Balcony

Despite Spurhouse's proximity to the open spaces of Hackney Downs, all living areas open onto private balconies and a space to enjoy those warm summer evenings.

Flooring

Beautifully engineered oak flooring provides warmth, style and an impression of real quality.

Kitchen

Fully integrated appliances complement the contemporary cabinets and stone worktops.





bathroom

Spurhouse bathrooms are created to instill a feeling of calm and restfulness. Recessed vapour resistant lighting complements feature lighting and an authentic feeling of quality is provided by the wall-hung ceramic fittings and large mirrors.

Taps

The timeless design of monobloc basin taps combined with the highest quality bath taps for pure indulgence.

Flooring

Porcelain tiles heated from beneath ensure a warmth to be appreciated on a cold winter's morning or whilst enjoying a long indulgent candlelit bath.

Sanitaryware

Premium vitreous china basins, baths and soft-close wall-hung WCs in all apartments.



floorplans

Spurhouse's four floors offer a perfect mix of one, two and three bedroom apartments, with four penthouse apartments on the fourth floor offering extended living and outdoor space.

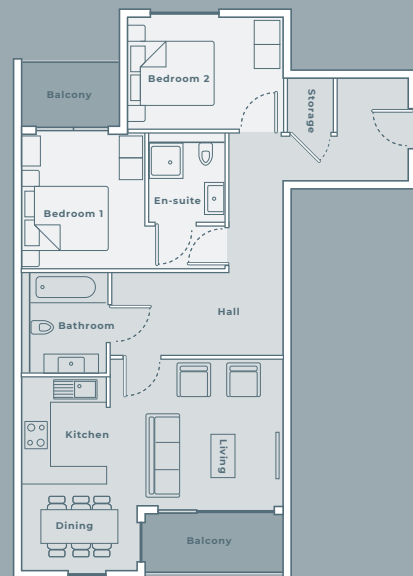
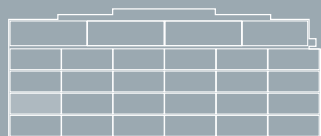
All apartments (and their balconies) face South West to make the most of the sunshine and overlook Spurstowe Terrace, a quiet side road only a minute from Hackney Downs Station.



Flat 03

First floor, two bedroom apartment with one en-suite bathroom. Open-plan kitchen, dining and living area, two balconies and an additional bathroom.

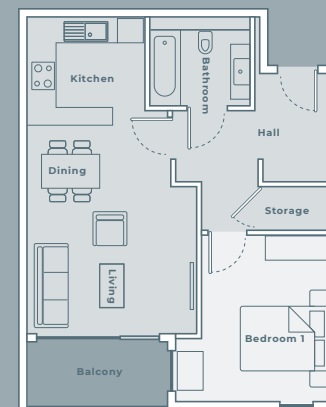
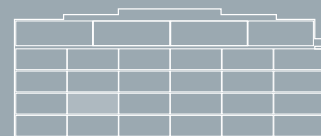
72.9m²



Flat 04

First floor, one bedroom apartment with an open-plan kitchen, dining and living area, balcony and bathroom.

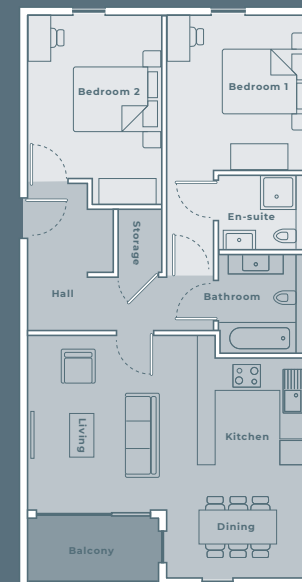
52.5m²



Flat 05

First floor, two bedroom apartment with one en-suite bathroom. Open-plan kitchen, dining and living area, balcony and a separate bathroom.

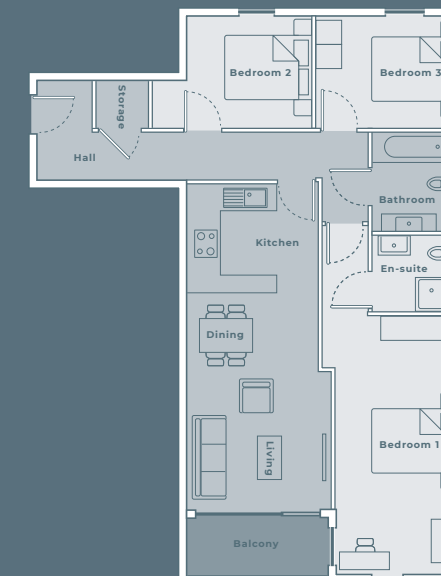
77.7m²



Flat 08

Spacious first floor, three bedroom apartment with an open-plan kitchen, dining and living area, two bathrooms and a balcony.

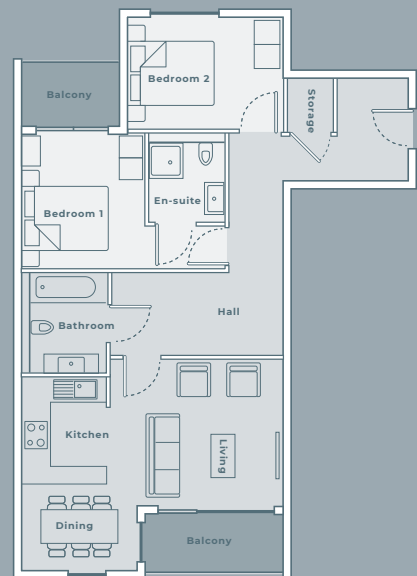
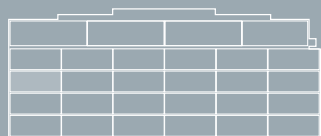
81.5m²



Flat 09

Second floor, two bedroom apartment with one en-suite bathroom. Open-plan kitchen, dining and living area, two balconies and an additional bathroom.

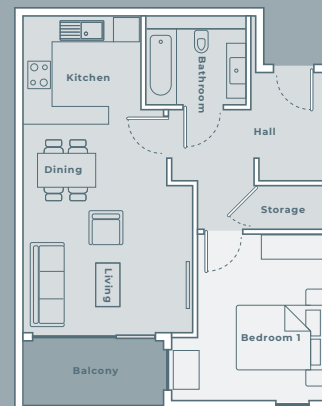
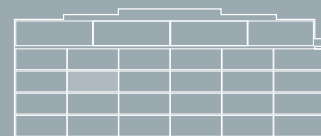
72.8m²



Flat 10

Second floor, one bedroom apartment with an open-plan kitchen, dining and living area, balcony and bathroom.

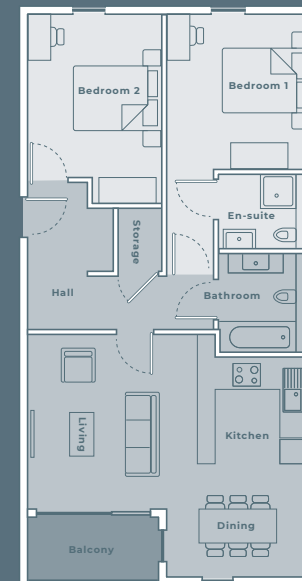
52.5m²



Flat 11

Second floor, two bedroom apartment with one en-suite bathroom. Open-plan kitchen, dining and living area, balcony and a separate bathroom.

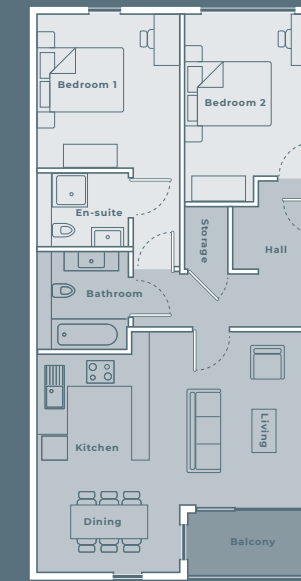
77.7m²



Flat 12

Second floor, two bedroom apartment, one with an en-suite bathroom. Open-plan kitchen, dining and living area with an additional bathroom and a balcony.

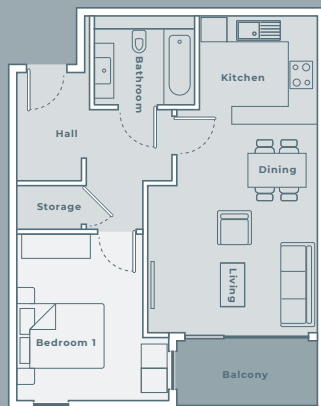
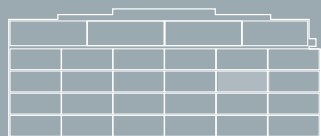
77.7m²



Flat 13

Second floor, one bedroom apartment with an open-plan kitchen, dining and living area, one bathroom and a balcony.

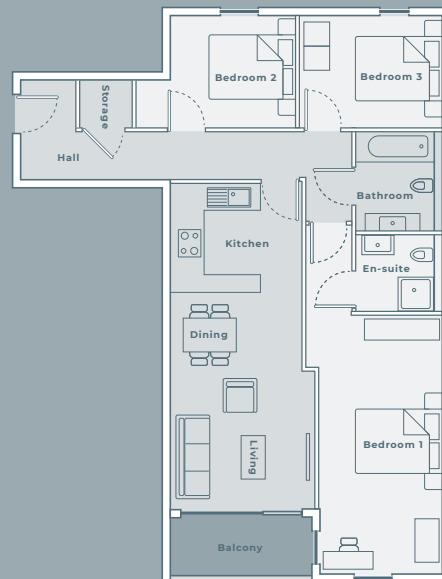
52.2m²



Flat 14

Spacious second floor, three bedroom apartment with an open-plan kitchen, dining and living area, two bathrooms and a balcony.

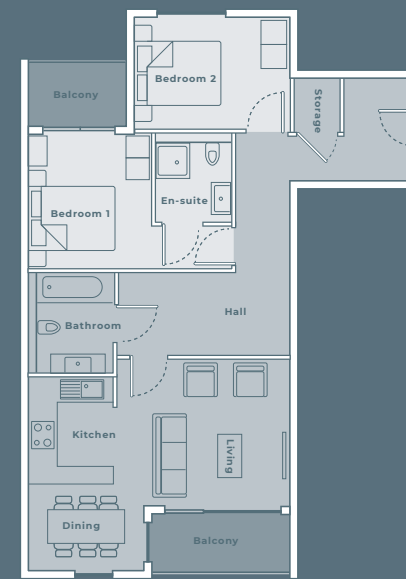
81.5m²



Flat 15

Third floor, two bedroom apartment with one en-suite bathroom. Open-plan kitchen, dining and living area, two balconies and an additional bathroom.

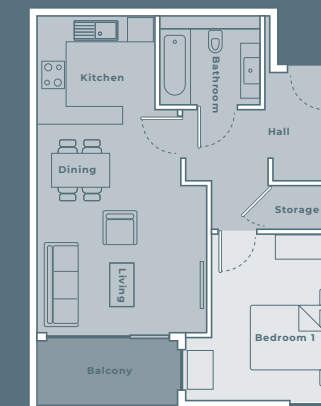
72.8m²



Flat 16

Third floor, one bedroom apartment with an open-plan kitchen, dining and living area, balcony and bathroom.

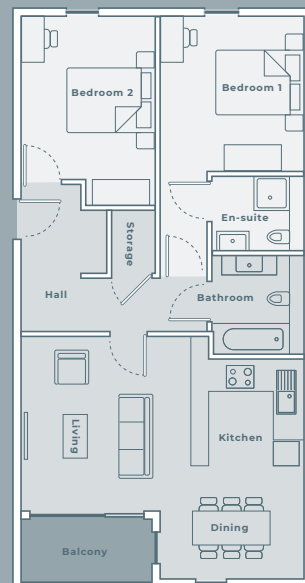
52.5m²



Flat 17

Third floor, two bedroom apartment with one en-suite bathroom. Open-plan kitchen, dining and living area, balcony and a separate bathroom.

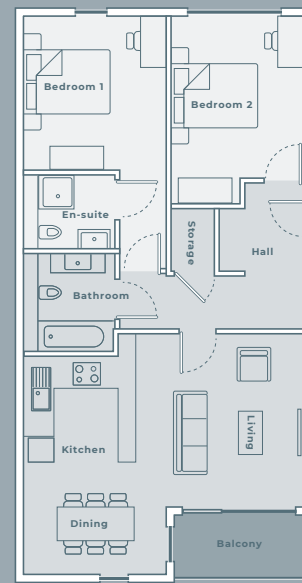
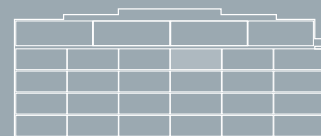
77.7m²



Flat 18

Third floor, two bedroom apartment, one with an en-suite bathroom. Open-plan kitchen, dining and living area with an additional bathroom and a balcony.

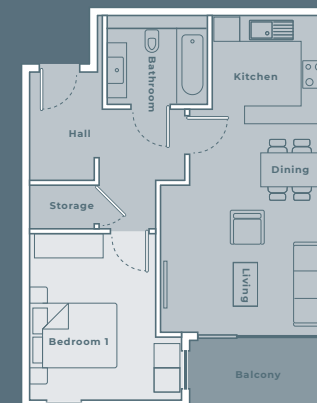
77.7m²



Flat 19

Third floor, one bedroom apartment with an open-plan kitchen, dining and living area, one bathroom and a balcony.

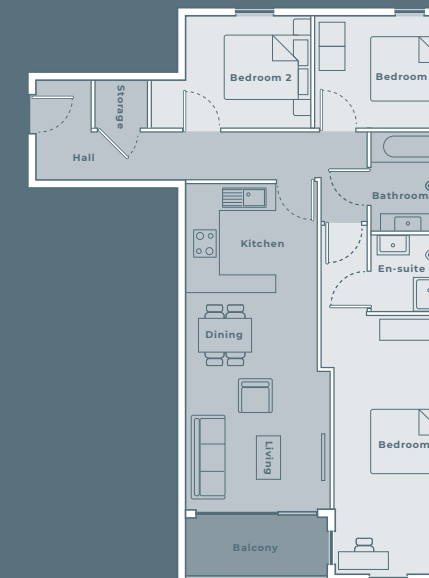
52.2m²



Flat 20

Spacious third floor, three bedroom apartment with an open-plan kitchen, dining and living area, two bathrooms and a balcony.

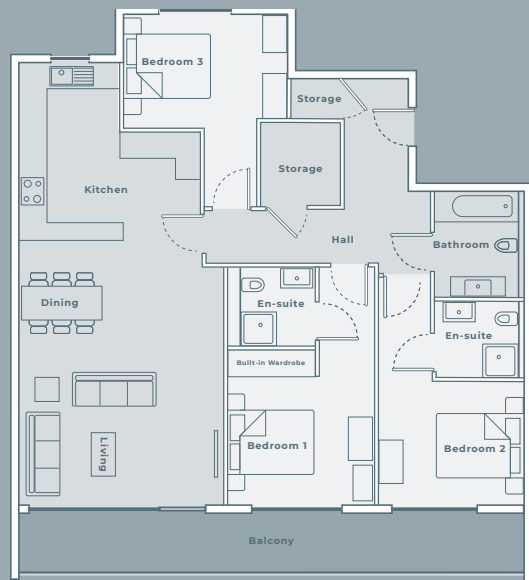
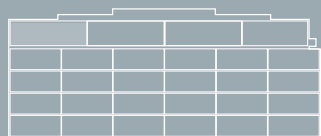
81.5m²



Flat 21

A spacious three bedroom penthouse apartment, two with en-suite bathrooms, open-plan kitchen, dining and living area and an additional bathroom. The apartment benefits from a large rooftop balcony.

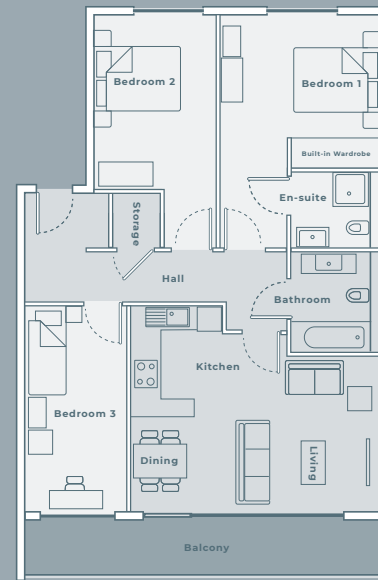
114.3m²



Flat 22

A spacious three bedroom penthouse apartment, with one en-suite bathroom, an open-plan kitchen, dining and living area and an additional bathroom. The apartment benefits from a rooftop balcony.

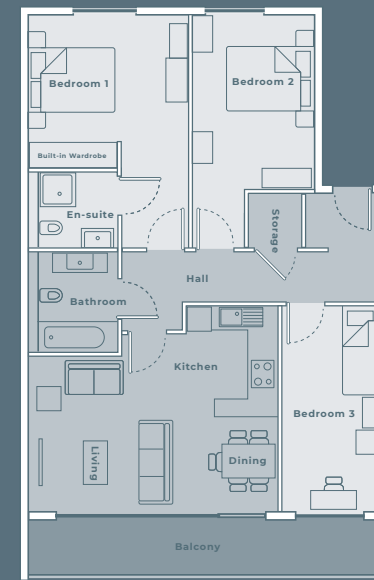
86.3m²



Flat 23

A spacious three bedroom penthouse, with one en-suite bathroom, an open-plan kitchen, dining and living area and an additional bathroom. The apartment benefits from a rooftop balcony.

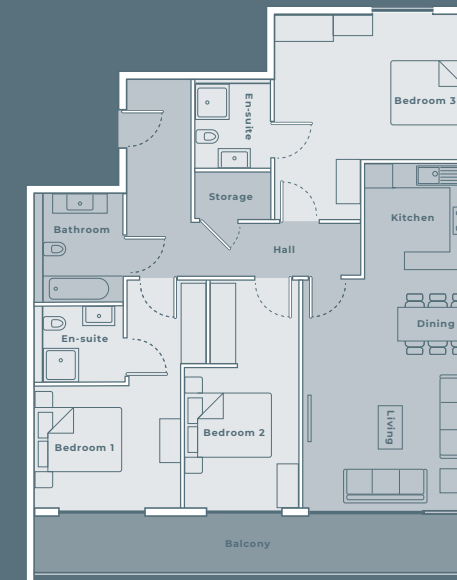
85.6m²



Flat 24

A spacious three bedroom penthouse apartment with two en-suite bathrooms, open-plan kitchen, dining and living area and an additional bathroom. The apartment benefits from a large rooftop balcony.

102.7m²





The Hackney Picture House

located in the vibrant heart of Hackney

From its rich industrial past as home to many of London's timber yards and livestock traders, Hackney has evolved into one of the city's most desirable neighbourhoods.

Its open spaces, thriving nightlife and burgeoning community of creative and tech start-ups ensure a bustling energy and a rich cultural mix that has given rise to a melting pot of artisan bakers and coffee roasters. The area also now boasts an eclectic mix of independent retailers and specialist street markets selling everything from fresh produce to vintage goods.

And with a slew of pubs, bars and restaurants to choose from, it is no surprise that Hackney is so sought after by London's stylish young professionals.

Spurhouse sits in the centre of Hackney, nestled midway between the open green spaces of Hackney Downs and the renowned recreational facilities at leafy London Fields.

A unique location, moments from the social hotspots of Hackney Central and the cool nightlife of Dalston, yet within touching distance of the City of London and its neighbouring areas of Spitalfields, Shoreditch and Hoxton.



London Fields Lido



The Pembury Tavern



Hackney Downs

local area

Spurhouse is well-served by a wide range of bakeries, fine wine shops and supermarkets as well as a good selection of fitness centres and yoga studios. The immediate area is also home to many fine cafés, pubs and entertainment venues.

Cafés / Restaurants

1. L'Entrepot: Local favourite. Bar and snacks from Tuesday to Sunday.
2. Palm Vaults: Local independent café.
3. Pacific Social Club: Hip local café with excellent coffee.
4. Lardo: Industrial chic pizzeria for brunch, drinks and Italian small plates.
5. e5 Bakehouse: Renowned artisan bakery and coffee house.
6. Pidgin: Tiny award-winning restaurant where the menu changes weekly.
7. Raw Duck: All day dining with a Mediterranean influence.
8. HashE8: Fabulous British diner/modern greasy spoon serving Brunch all day long.

Pubs

9. The Pembury Tavern: Local institution recently taken over by Hackney's own Five Point Brewing Co.
10. The Star by Hackney Downs: Trendy pub with DJ sessions.
11. Prince George: Another local favourite – shabby-chic cool.
12. Prince Arthur: Victorian pub serving local beers and great food.
13. Duke of Richmond: Restored neighbourhood pub and dining from Tom Oldroyd.
14. The Taproom: Local pub brought to you by the London Fields Brewery.
15. The Spurstowe Arms: Popular, relaxed local serving great food.

Entertainment

16. Hackney Empire: Major London live music, theatre and comedy venue.
17. London Fields Lido: Outdoor 50m public pool with sun terrace and café.
18. Hackney Picture House: Independent cinema with all day café bar.
19. Oslo: Live music venue in a former railway station.
20. The Institute of Light: Independent cinema, restaurant, bar and vinyl store.
21. The Victoria: Pub and live music room with a long tradition and a focus on rum.

Transport

- 🚇 Hackney Downs: London Overground (8 minutes to Liverpool St.)
- 🚇 Hackney Central: London Overground (8 minutes to Westfield Stratford)
- 🚇 Dalston Kingsland: London Overground
- 🚇 Dalston Junction: London Overground (6 minutes to Shoreditch High St.)
- 🚇 London Fields: London Overground



contact

estate agency by

fyfe mcdade

For more information about Spurhouse
please contact Fyfe McDade:

020 7613 4044

fyfemcdade.com

Spurhouse
4-14 Spurstowe Terrace
London E8 1LT

Spurhouse is a joint development by:

URBANISTA  **cogress**



spurhouseE8.london

Whilst these particulars are prepared with all due care for the convenience of intending purchasers, the information contained herein is a preliminary guide only. Neither the vendors, nor their agents or any person in their employ has any authority to make or give representation, warranty or guarantee (whether oral or written) in respect of, or in relation to the development or any part thereof. The computer generated illustrations are drawn from plan and are indicative only of how the complete development will appear. Any literature provided does not form any part of a sale contract. The companies employ a policy of continuous improvement and reserve the right to alter or amend the specification as necessary and without prior notice.


spurhouse