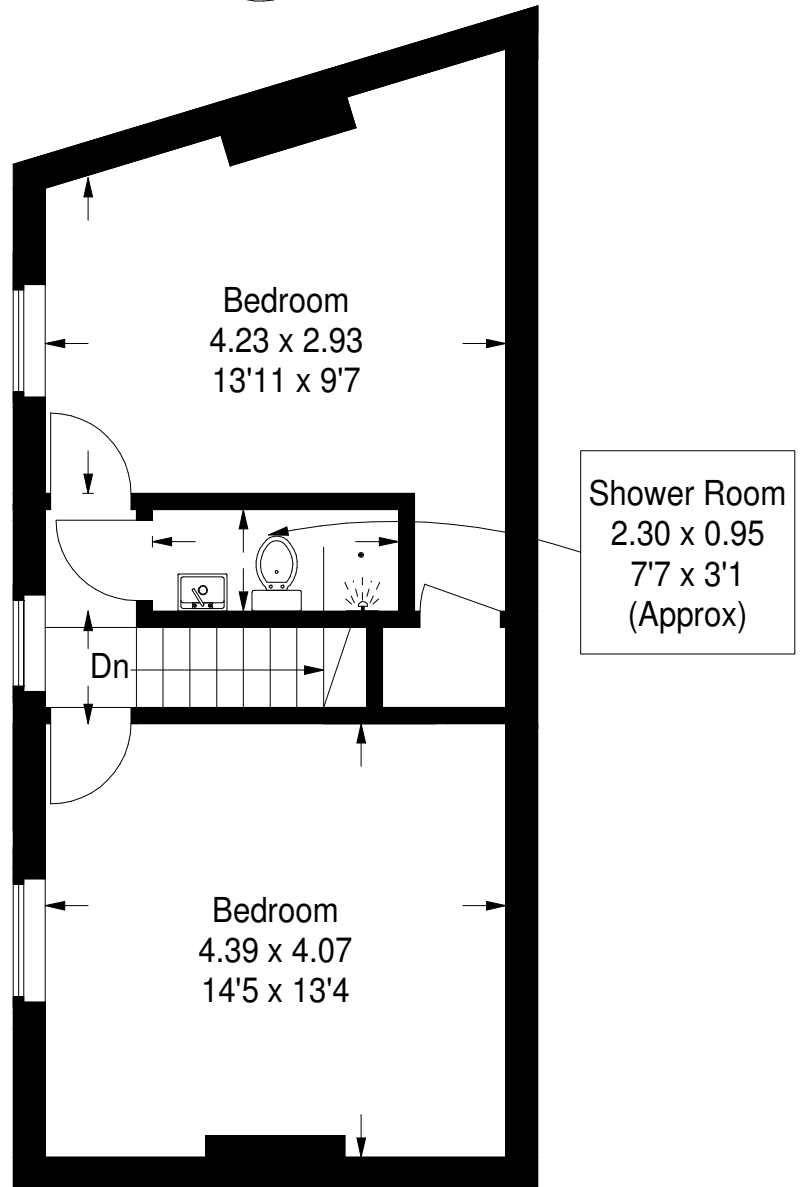
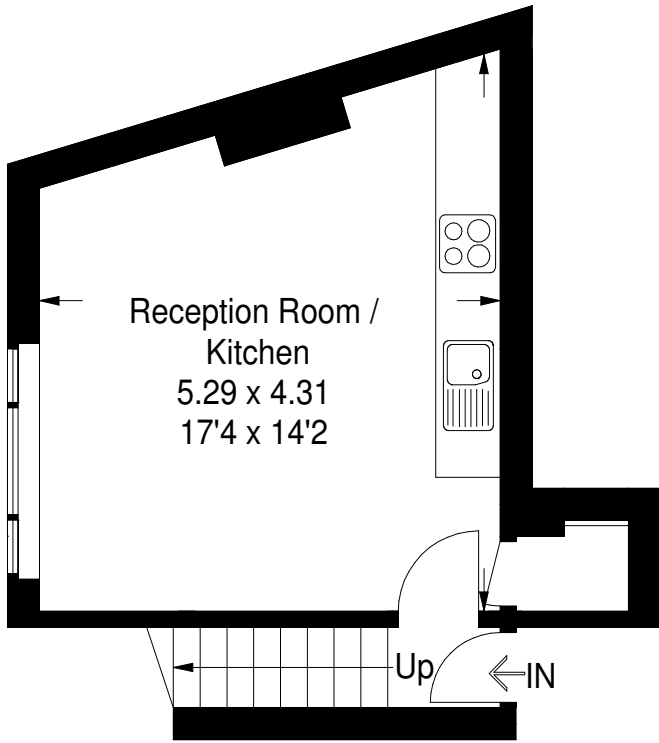
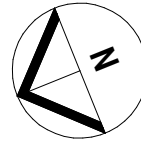


Raynham Road

Approximate Gross Internal Area
65.3 sq m / 703 sq ft



First Floor
23.6 sq m / 254 sq ft

Second Floor
41.7 sq m / 449 sq ft

Although every attempt has been made to ensure accuracy, all measurements are approximate.
This floorplan is for illustrative purposes only and not to scale.
Measured in accordance with RICS standards. © www.perspective.co.uk