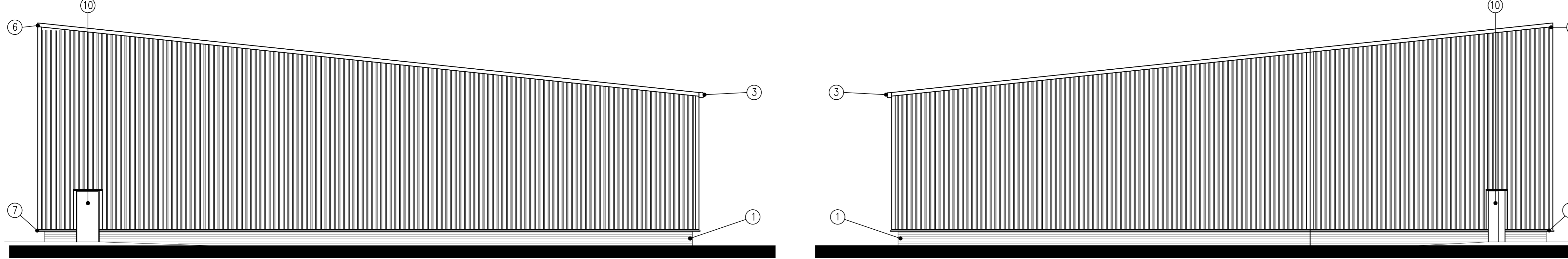
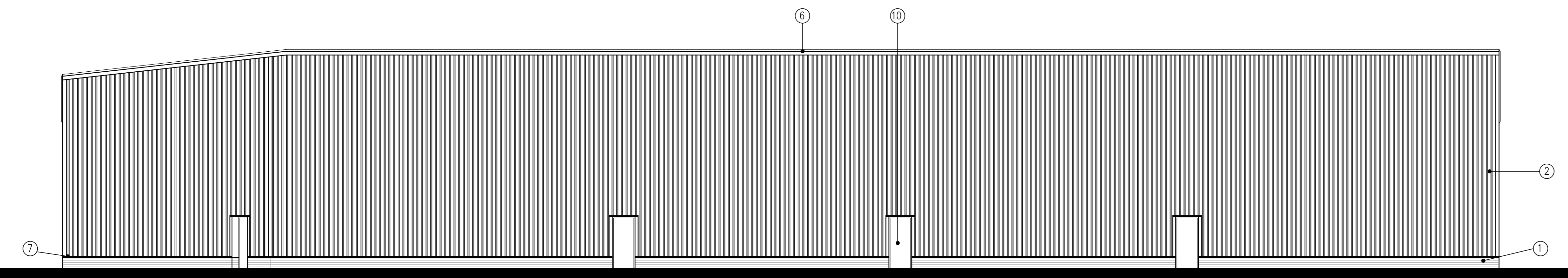


NORTH ELEVATION

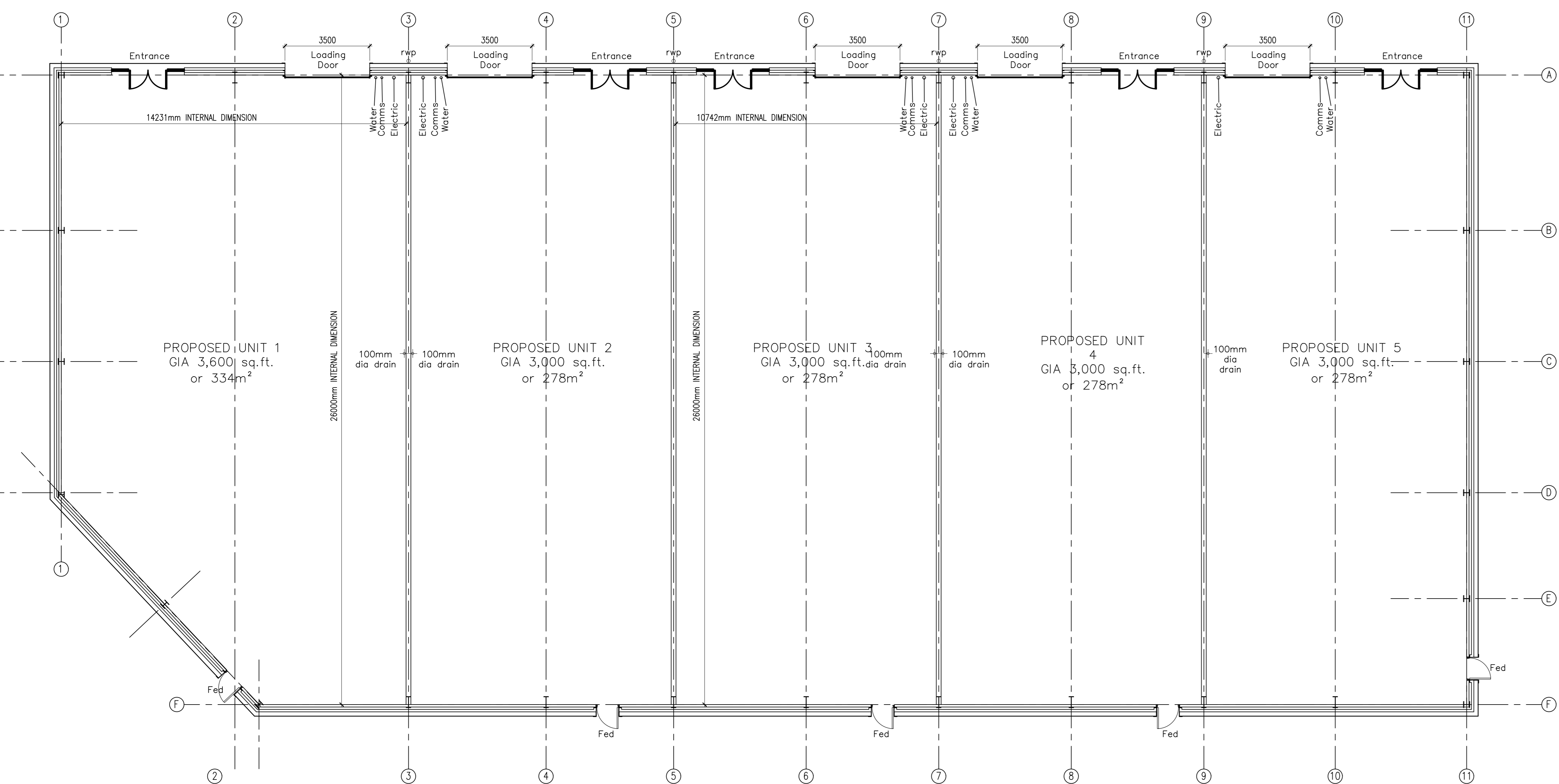


EAST ELEVATION

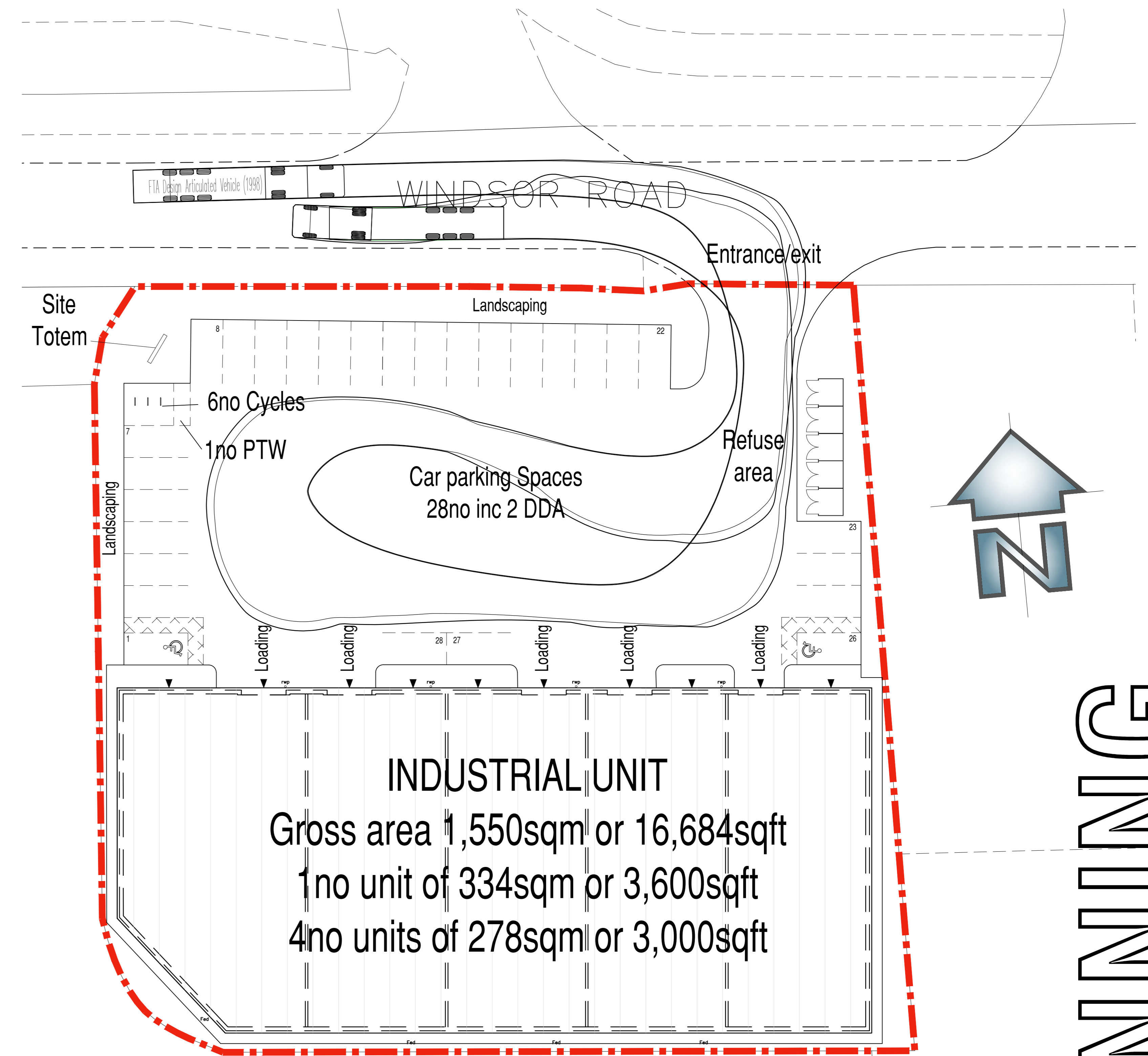
WEST ELEVATION



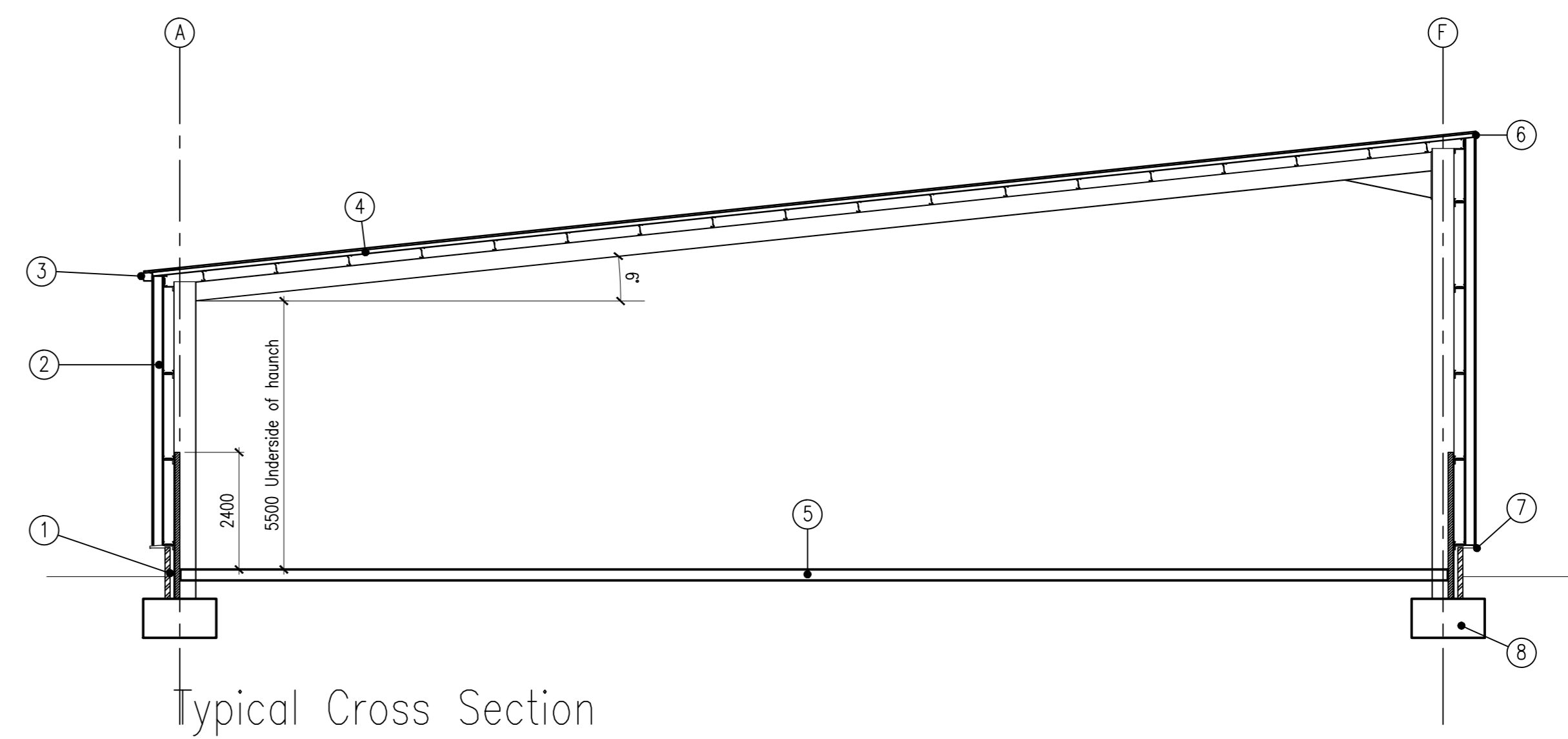
SOUTH ELEVATION



PROPOSED GROUND FLOOR PLAN



Site Layout
1:200 Scale




Typical Cross Section

Proposed Materials:

- 1 - Brick/ block cavity wall at low level, blockwork internally to 2.4m high
- 2 - Profiled metal cladding
- 3 - Trim line style eaves gutter
- 4 - Profiled metal roof cladding
- 5 - Power floated concrete floor slab
- 6 - Pressed metal verge flashing
- 7 - Pressed metal drip flashing
- 8 - Concrete foundations to engineers details
- 9 - Insulated electrically operated sectional overhead doors
- 10 - Prefinished steel doors
- 11 - Powder coated aluminum windows and doors with double glazed units.
- 12 - Jumbo stud party walls

PLANNING

0m 1m 5m 10m
1:100

REV.	DATE	AMENDMENT
 WPL Consulting LLP 1 Airport West, Lancaster Way, Leeds, LS19 7ZA Tel: 0113 202 9444 Fax: 0113 202 9333 E-mail: mail@wplconsulting.co.uk		
PROJECT TITLE PROPOSED INDUSTRIAL UNITS WINDSOR ROAD LOUTH FOR WILHAM PROPERTIES		
DRAWING TITLE SCHEME PROPOSALS PLANNING		
PROJECT No: 8994	DRAWING No: PL 100	REVISION:
SCALE: 1:100/1:200	DATE: July 19	DRAWN BY: RJS
CHECKED BY:	DATE:	