

SW19

it's all in the postcode...



Byegrove Road

Colliers Wood

£465,000

- Two bed ground floor
- Share of freehold
- Private garden
- Recently renovated
- Close to Wandle Park and Colliers Wood Tube



Wimbledon 119 Merton Road London SW19 1ED

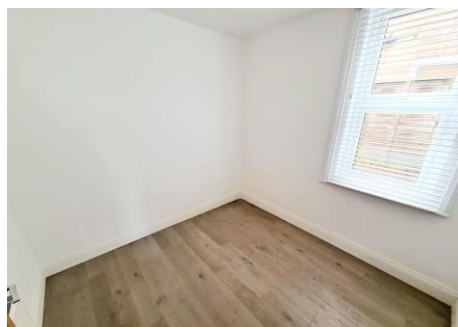
Colliers Wood 44 High Street London SW19 2AB

020 8544 2828

www.SW19.com

SW19 Estate Agents Ltd. Is registered in England & Wales No. 05508737

Looking for your dream home in an ideal location? Look no further than this charming ground floor two-bedroom maisonette on Byegrove Road! Situated just moments away from the Wandle Park and Colliers Wood tube station, this property is perfectly positioned for easy access to all the amenities you need. And with its recent renovation to a good standard, you'll enjoy all the benefits of a modern home. The property boasts a private garden, perfect for relaxing or entertaining, and the best news is that it comes with a share of freehold and no chain, making it an excellent investment opportunity. Don't miss your chance to make this fantastic property your new home. Contact us today to arrange a viewing and see all that this wonderful maisonette has to offer!

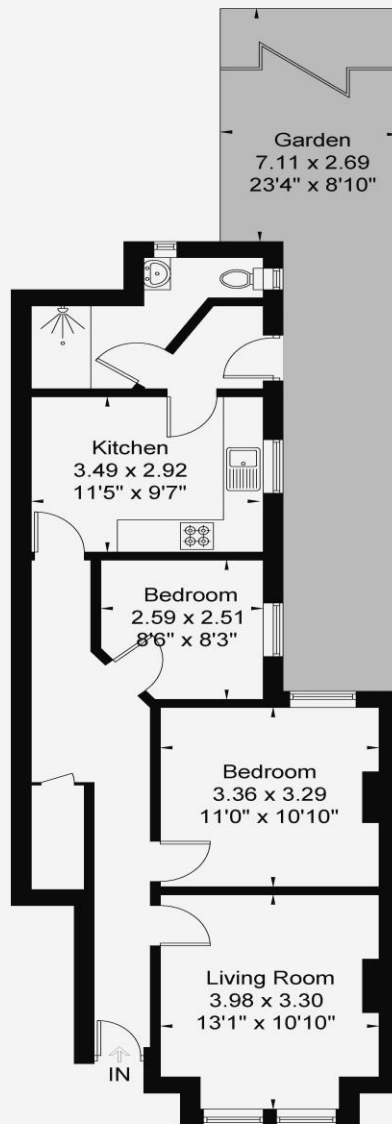


Wimbledon 119 Merton Road London SW19 1ED
Colliers Wood 44 High Street London SW19 2AB
020 8544 2828
www.SW19.com

SW19 Estate Agents Ltd. Is registered in England & Wales No. 05508737

Byegrove Road SW19

Approximate Gross Internal Area = 61.5 sq m / 661 sq ft



Ground Floor
61.5 sq m / 661 sq ft

www.epc.uk.com info@epc.uk.com

Not to scale, for guidance only and must not be relied upon as a statement of fact. All measurements and areas are approximate only and have been prepared in accordance with the current edition of RICS code of Measuring Practice.

These particulars are for guidance only and should not be relied upon as a statement or representation of fact. All measurements given are approximate only and should not be relied upon for ordering carpets, equipment etc. Purchasers should satisfy themselves by inspection or otherwise as to the accuracy of the statements contained within. Neither SW19 estate agents ltd or related companies or their employees can confirm structural conditions of the property or that any appliances or other facilities are in working order. Purchasers are strongly recommended to arrange their own survey.

Wimbledon 119 Merton Road London SW19 1ED
Colliers Wood 44 High Street London SW19 2AB
020 8544 2828
www.SW19.com

SW19 Estate Agents Ltd. Is registered in England & Wales No. 05508737