



18 Old Oak Common Lane
Acton
London
W3 7EL
T: 020 8749 9798
E: sales@churchillmathesons.com
www.churchillmathesons.com

Churchill & Mathesons

East Acton Lane, London W3 7ER

Asking Price £1,300,000 Freehold



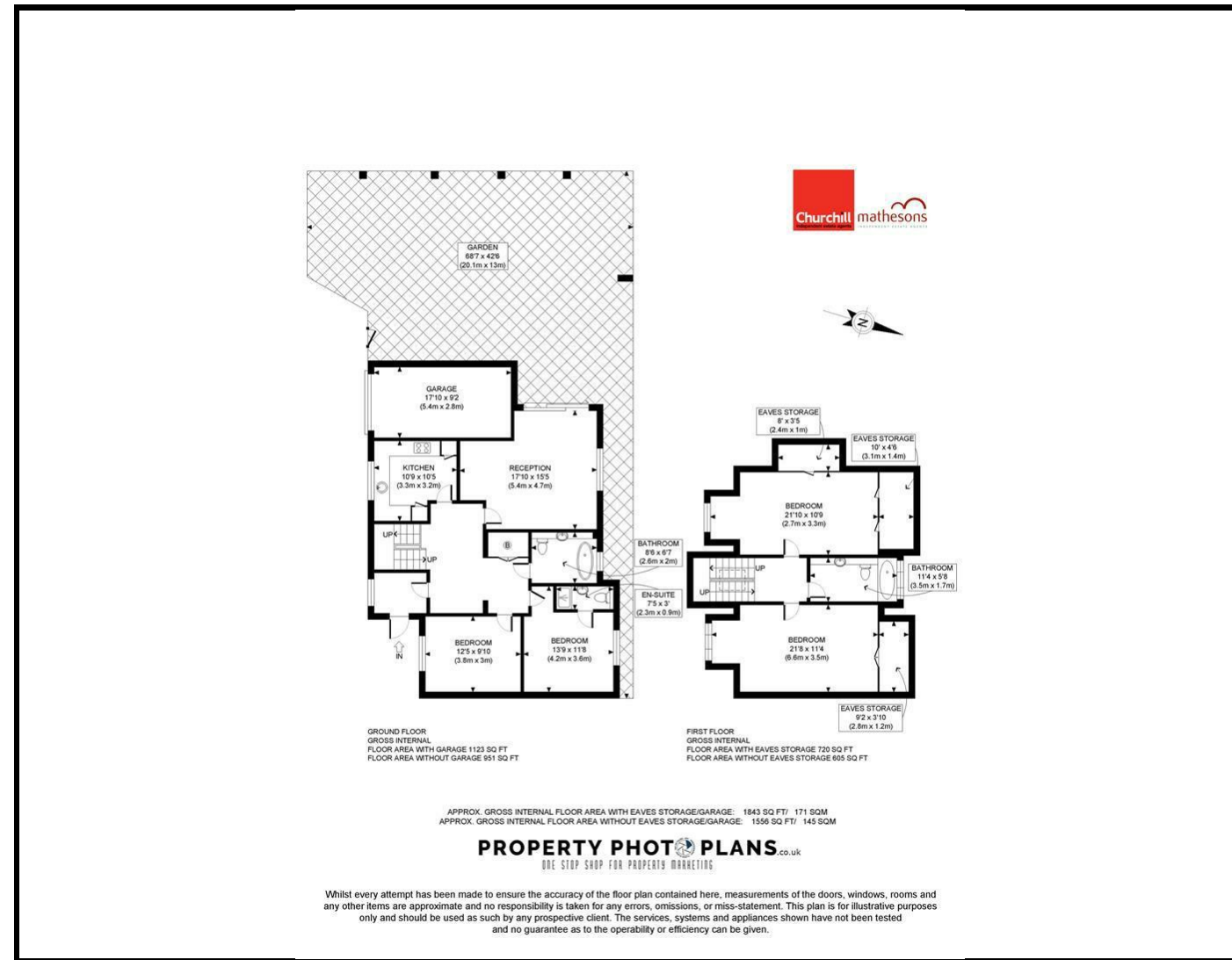
KEY FEATURES:

- FOUR BEDROOM DETACHED HOUSE
- THREE BATHROOMS
- PRIVATE REAR GARDEN
- ALARM SYSTEM
- GARAGE
- OFF STREET PARKING FOR UP TO THREE CARS
- NO UPPER CHAIN
- VACANT

A SPACIOUS DETACHED FOUR BEDROOM HOUSE WITH OFF STREET PARKING FOR THREE CARS.

The property comprises of large lounge with direct access to a PRIVATE REAR GARDEN, fitted kitchen, four double bedrooms with the main bedroom having access to an en-suite shower room and two separate bathrooms. Further advantages include ALARM SYSTEM, CCTV and GARAGE. The total floor area is approximately 1556 SQ/FT (145 SQ/M).

East Acton Lane is located close to local shops, cafes and amenities of Acton and the King Fahad Academy, Local transport links including bus routes to Westfield Shopping Centre and East Acton Underground Station (Central Line - Zone 2) is a short walk away offering quick and frequent access into Central London. Local Authority London Borough of Ealing. Council Tax Band G.



Energy Efficiency Rating		
	Current	Potential
Very energy efficient - lower running costs		
(92 plus) A		
(81-91) B		
(69-80) C		
(55-68) D		
(39-54) E		
(21-38) F		
(1-20) G		
Not energy efficient - higher running costs		
	76	86
England & Wales	EU Directive 2002/91/EC	

Environmental Impact (CO ₂) Rating		
	Current	Potential
Very environmentally friendly - lower CO ₂ emissions		
(92 plus) A		
(81-91) B		
(69-80) C		
(55-68) D		
(39-54) E		
(21-38) F		
(1-20) G		
Not environmentally friendly - higher CO ₂ emissions		
England & Wales	EU Directive 2002/91/EC	

Whilst every effort is made to give a fair description, the accuracy of these particulars is not guaranteed, neither do they constitute an offer or contract.

CHURCHILL & MATHESONS ESTATE AGENTS have not tested any apparatus, equipment, fitting or services and so cannot verify that they are in working order. The buyer is advised to obtain verification from their solicitor or surveyor. Measurements are correct to within +/-6 A sonic tape is used. None of the statements contained in these particulars or any of our properties are to be relied upon as a representation of fact.