

# FREEHOLD RESIDENTIAL INVESTMENT WITH PLANNING PERMISSION FOR SALE

**City &  
Counties**  
— Commercial —

GREENWICH



108 Blackheath Road, Greenwich, London SE10 8PD

Price £400,000



Property Type

**RESIDENTIAL  
INVESTMENT**



Size

**1,076 SQFT**



Tenure

**FREEHOLD**



Borough

**GREENWICH**



Recent Planning

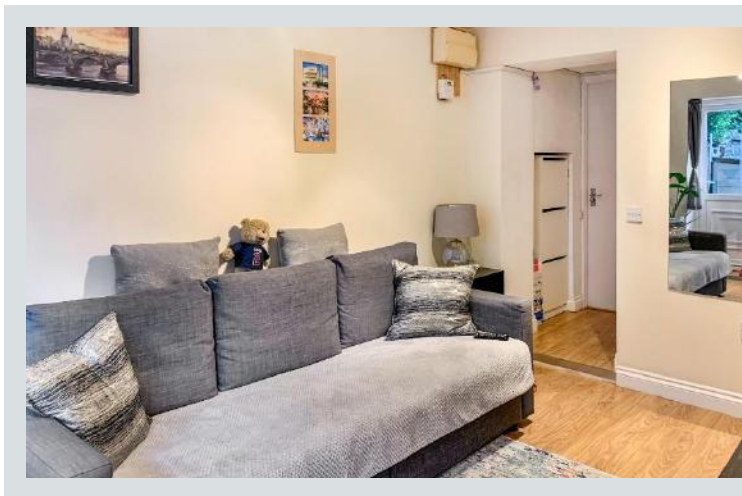
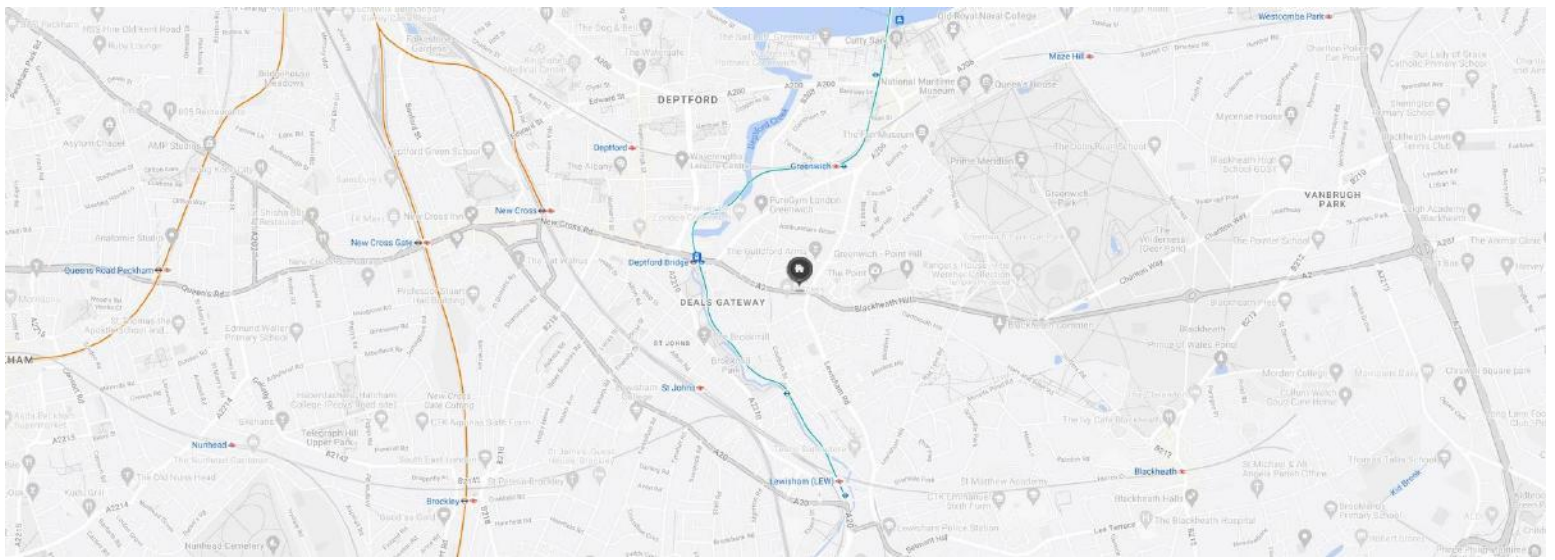
**15/3056/F**





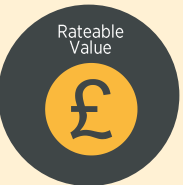



Existing Use

**C3 DWELLING  
HOUSES**





 <b>Tenanted</b> <b>YES</b>	 <b>Local Train Stations</b> <b>Elverson Road DLR (0.3 miles)</b> <b>Deptford Bridge DLR (0.3 miles)</b> <b>Greenwich DLR (0.4 miles)</b>	 <b>Local Amenities</b> <b>Greenwich Park (0.6 miles)</b> <b>Blackheath Village (1.3 miles)</b> <b>The O2 (2.8 miles)</b>
 <b>VAT Applicable</b> <b>NO</b>	 <b>Rateable Value</b> <b>N/A</b>	 <b>EPC Rating</b> <b>N/A</b>

### Additional Information

A freehold building arranged as four self-contained units in good decorative condition in the heart of Blackheath. Three of the units are let on ASTs and one is sold on a long lease with 62 years remaining. The properties are currently generating £27,840 per annum.

Planning permission was granted in 2021 to extend the ground and lower floor to create 2 x 2-bedroom flats replacing the existing three flats occupying those floors.

A full legal pack is available, and offers are encouraged in excess of £400,000.

## Accommodation Schedule

UNIT	SIZE (SQM)	SIZE (SQFT)	INCOME
Studio (Basement)	14	153	£6,600
1 Bed (Basement)	39	414	£11,160
1 Bed (Ground Floor)	47	509	£10,080
(First & Second)	100	1,076	£25

# CONTACT US



**Nathan King**  
SENIOR PROPERTY CONSULTANT

**E:** [nathan@cityandcounties.com](mailto:nathan@cityandcounties.com)

**T:** 020 8106 8666

**M:** 07506966968



**Latif Acisu**  
PROPERTY CONSULTANT

**E:** [latif@cityandcounties.com](mailto:latif@cityandcounties.com)

**T:** 020 8106 8666

**M:** 07588234318



**Bogdan Anghel**  
PROPERTY CONSULTANT

**E:** [bogdan@cityandcounties.com](mailto:bogdan@cityandcounties.com)

**T:** 020 8106 8666

**M:** 07340417505



Unit 2, 2 Delacourt Road London SE3 8XA

**T:** 020 8106 8666 **E:** [info@cityandcounties.com](mailto:info@cityandcounties.com) **Whatsapp:** 07523 863 026

**[www.cityandcounties.com](http://www.cityandcounties.com)**

- These particulars are only a general outline for the guidance of intending purchasers or lessees and do not constitute in whole or in part an offer or a Contract.
- Reasonable endeavours have been made to ensure that the information given in these particulars is materially correct, but any intending purchaser or lessee should satisfy themselves by inspection, searches, enquiries, and survey as to the correctness of each statement.
- All statements in these particulars are made without responsibility on the part of City & Counties Commercial or the vendor or lessor.
- No statement in these particulars is to be relied upon as a statement or representation of fact.
- Neither City & Counties Commercial LLP nor anyone in its employment or acting on its behalf has authority to make any representation or warranty in relation to this property.
- Nothing in these particulars shall be deemed to be a statement that the property is in good repair or condition or otherwise nor that any services or facilities are in good working order.
- Photographs may show only certain parts and aspects of the property at the time when the photographs were taken, and you should rely on actual inspection.
- No assumption should be made in respect of parts of the property not shown in photographs.
- Any areas, measurements or distances are only approximate.
- Any reference to alterations or use is not intended to be a statement that any necessary planning, building regulation, listed building or any other consent has been obtained.
- Amounts quoted are exclusive of VAT if applicable.

IMPORTANT: we would like to inform prospective purchasers that these sales particulars have been prepared as a general guide only. A detailed survey has not been carried out, nor the services, appliances and fittings tested. Room sizes should not be relied upon for furnishing purposes and are approximate. If floor plans are included, they are for guidance only and illustration purposes only and may not be to scale. If there are any important matters likely to affect your decision to buy, please contact us before viewing the property.