



Montrave Road, Penge

Offers in the region of £850,000 4  1 

Property Summary

Available to view by appointment only - Saturday 16th April 2022 at 12.00 -1pm

Propertyworld is proud to act as sole agents on this stunning and rare four bedroom period property located on arguably SE20's best road. Offered CHAIN FREE, this period beauty has been lovingly upgraded by the current owners and is simply stunning; combining contemporary design ideas and materials with period features and charm.. Flooded in light, this spacious house benefits from beautifully proportioned accommodation throughout, across multiple floors. The details include: on the ground floor - a beautiful double reception room (separated with sliding doors) with a stunning oak floor, high ceilings, neutral decor, bay window to front and wood burner, to rear is a fab kitchen diner with timber patio doors leading to the rear garden, a range of high gloss wall and base units, ceramic sink, integrated gas hob, electric oven, oak floor, spotlights and clever bay seating area, on the first floor there are three bedrooms - all beautifully presented and all flooded in light, plus a family bathroom including tiled walls and floor, there piece suite and shower, on the top floor is a fourth bedroom and second bathroom. The rear garden is hard landscaped to centre with mature beds to side. A stunning house that demands your attention.

Please note, that we ask that all prospective purchasers must be in a position to proceed - having either nothing to sell, or be under offer. Call Propertyworld on 0208 488 0011 to view.

Penge
020 8659 1005
www.propertyworlduk.net

Key Features

- Four bedroom house
- Period property
- Stunning interior
- Fabulous road
- Residential cul de sac
- Double reception room
- Fabulous kitchen / diner
- Landscaped garden
- Two bathrooms
- CHAIN FREE
- Close to Crystal Palace Park



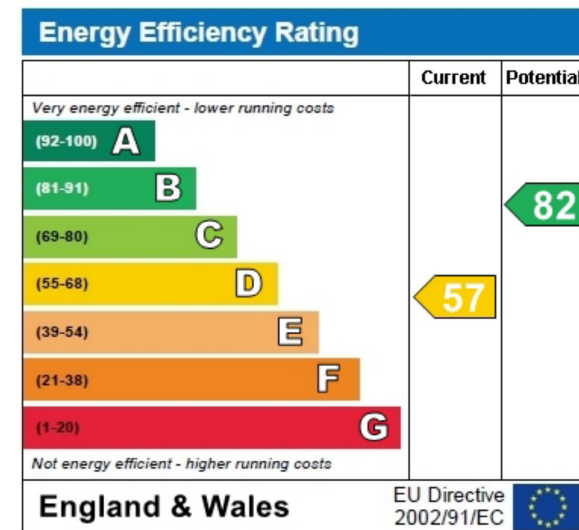
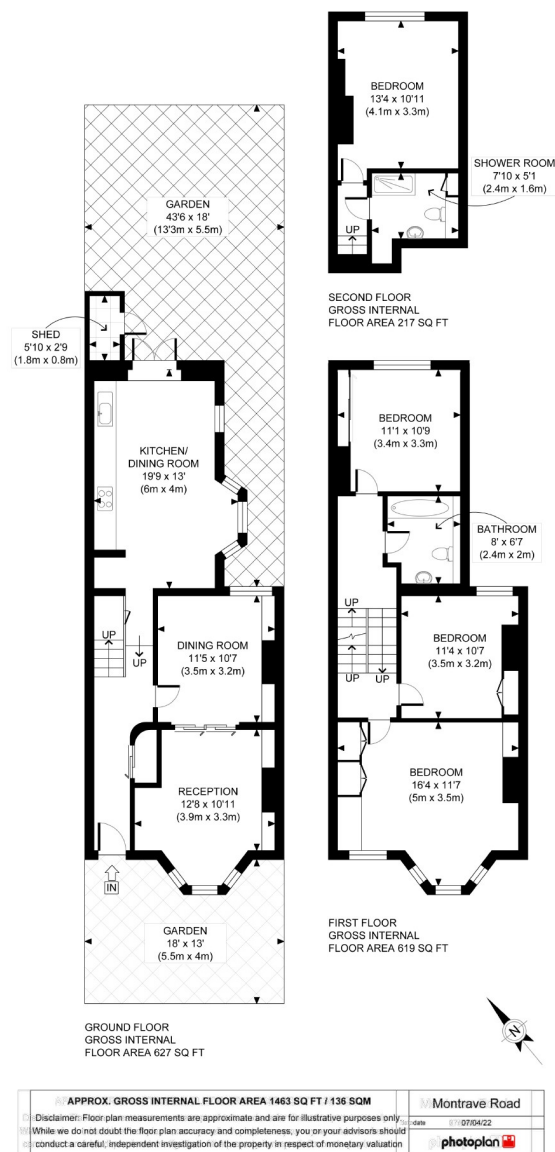
Our Vendor loves...

Our Vendor loves.....

"This has been a fantastic home for us, for many years. Its a big house and has served us well, The kitchen has always been the hub of the house, especially during the week days. The bedrooms are good sizes as well - bright and airy too. The area is great for growing families - good nurseries and primary schools. There's an amazing local Brasserie just across the road, including a theatre on the top floor and best of all Crystal Palace Park. Also lots of transport links into London are also fantastic with two stations (Penge East and Penge West) close by giving access to a National Rail line to Victoria and the overground.







These particulars, whilst believed to be accurate are set out as a general outline only for guidance and do not constitute any part of an offer or contract. Intending purchasers should not rely on them as statements of representation of fact, but must satisfy themselves by inspection or otherwise as to their accuracy. No person in this company's employment has the authority to make or give any representation or warranty in respect of the property.