



THE KEY TO YOUR NEXT MOVE

www.keyestateagents.com

For Sale

Tel: 024 7635 7645



£220,000

8 Skylark Fields, Weddington, Nuneaton CV10 0GE



2



1



1



B

E-mail: sales@keyestateagents.com

KEY ESTATE AGENTS

Website: www.keyestateagents.com

KEY Estate Agents are delighted to offer for sale this modern, two bedroom, semi detached home. The property benefits from a driveway for two cars, a downstairs toilet and a garden. The property is located in a desirable area and is ideally located for commuters with the A444 and A5 just minutes away. This would make an ideal home for first time buyers. Viewing is advised. To view, call KEY.

Tenure: Freehold
Council Tax Band: B
EPC Rating : B

Entrance



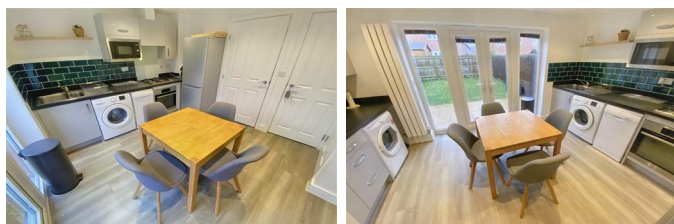
Enter through a part glazed front door into the hallway with stairs rising to the first floor and door to the living room.

Living Room 14'9" x 10'4" (4.51 x 3.16)



Carpeted living room with large window to the front aspect. A door leading from the hallway and one leading into the kitchen.

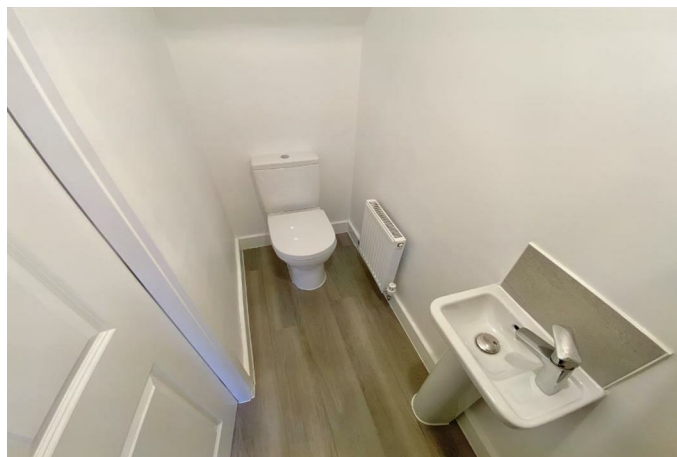
Kitchen / Diner 13'6" x 12'5" (4.12 x 3.80)



Modern kitchen/dining area benefitting from wall and floor mounted kitchen units built in oven and hob, integrated microwave, space for fridge freezer, space for three under counter appliances and sink

drainer unit. Laminate floor and pantry. Patio doors leading to garden. Door to downstairs W/C.

Downstairs W/C



Low flush W/C and sink.

Master Bedroom 13'6" x 10'0" (4.14 x 3.05)



Carpeted master bedroom with built in wardrobes and windows to front aspect.

Second Bedroom 13'7" x 8'0" (4.15 x 2.44)



Carpeted second bedroom with built in wardrobe and window to rear aspect.

Bathroom 5'6" x 6'11" (1.7 x 2.13)



Modern bathroom benefitting from a low flush W/C, sink unit and bath with overhead shower and shower screen.

Garden

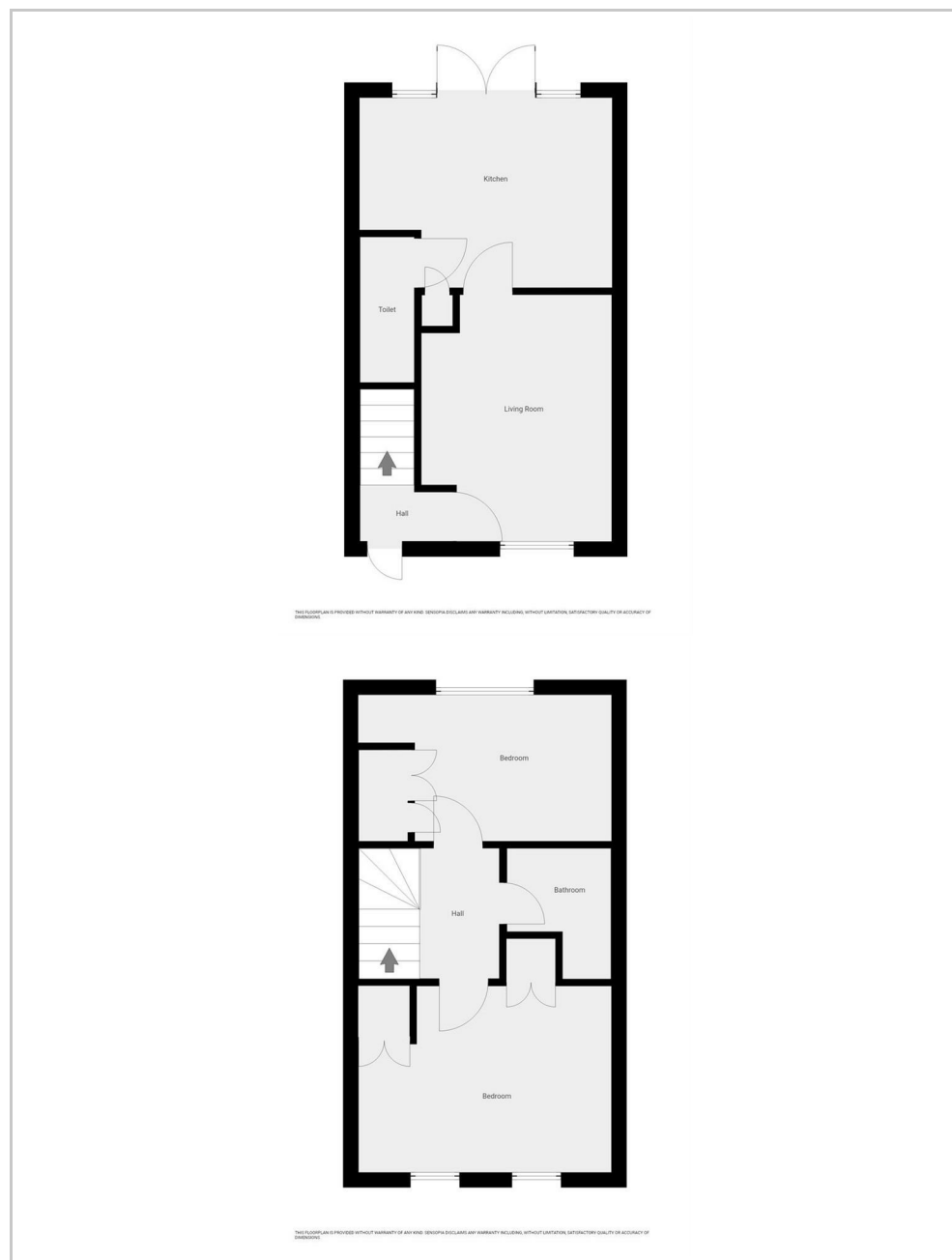


Garden with patio and lawn. Wooden fence around boarder.

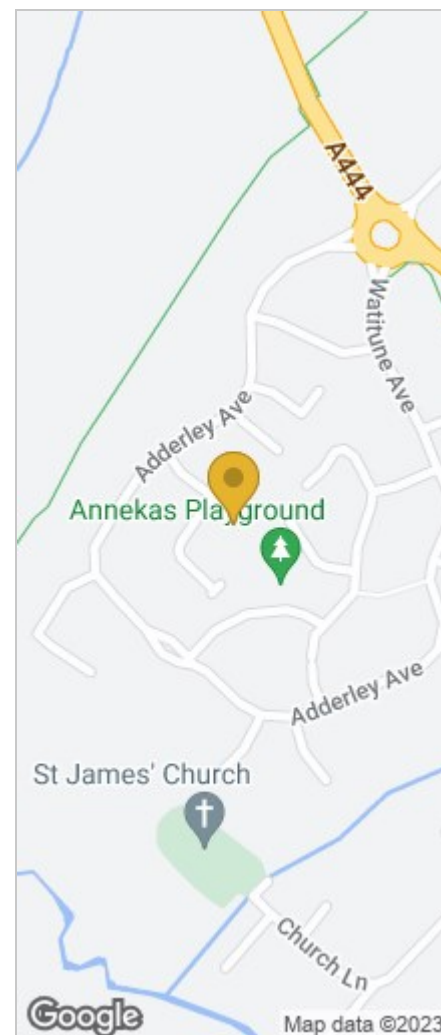
Parking

Driveway providing off road parking for two cars.

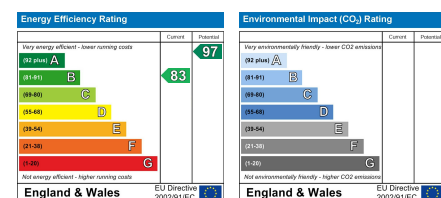
Floor Plan



Area Map



Energy Efficiency Graph



HAVE YOU GOT A PROPERTY TO SELL OR LET?

KEY Estate Agents offer a complete and professional service to Home Owners and Landlords throughout the **Nuneaton, Bedworth** and **Hinckley** and surrounding villages.

If you are thinking of selling or letting your home we would be delighted to offer you a **Free Valuation** with **No Obligation** whatsoever.

Please call us today for details on all of our services, along with information about our competitive fee structure.

KEY Estate Agents

2 The Courtyard, Goldsmith Way, Eliot Business Park, Nuneaton CV10 7RJ

sales@keyestateagents.com



Zoopla.co.uk



rightmove



These particulars do not constitute an offer contract and have been prepared for guidance only, and must not be relied upon as statement of fact. Area measurements or distances are given as guidance only and are not precise. Boundaries are subject to verification. Appliances and fittings have not been tested. Floor plans are not drawn to scale. The inclusion of any fixtures and fittings are subject to the vendor's confirmation, subject to contract. Internal photographs may well show furnishings, fixtures and fittings which are not included in the sale.



024 7635 7645