



18 Old Oak Common Lane
Acton
London
W3 7EL
T: 020 8749 9798
E: sales@churchillmathesons.com
www.churchillmathesons.com

Churchill & Mathesons

3 Bromyard Avenue, London, W3 7FJ

Asking Price £600,000 Leasehold



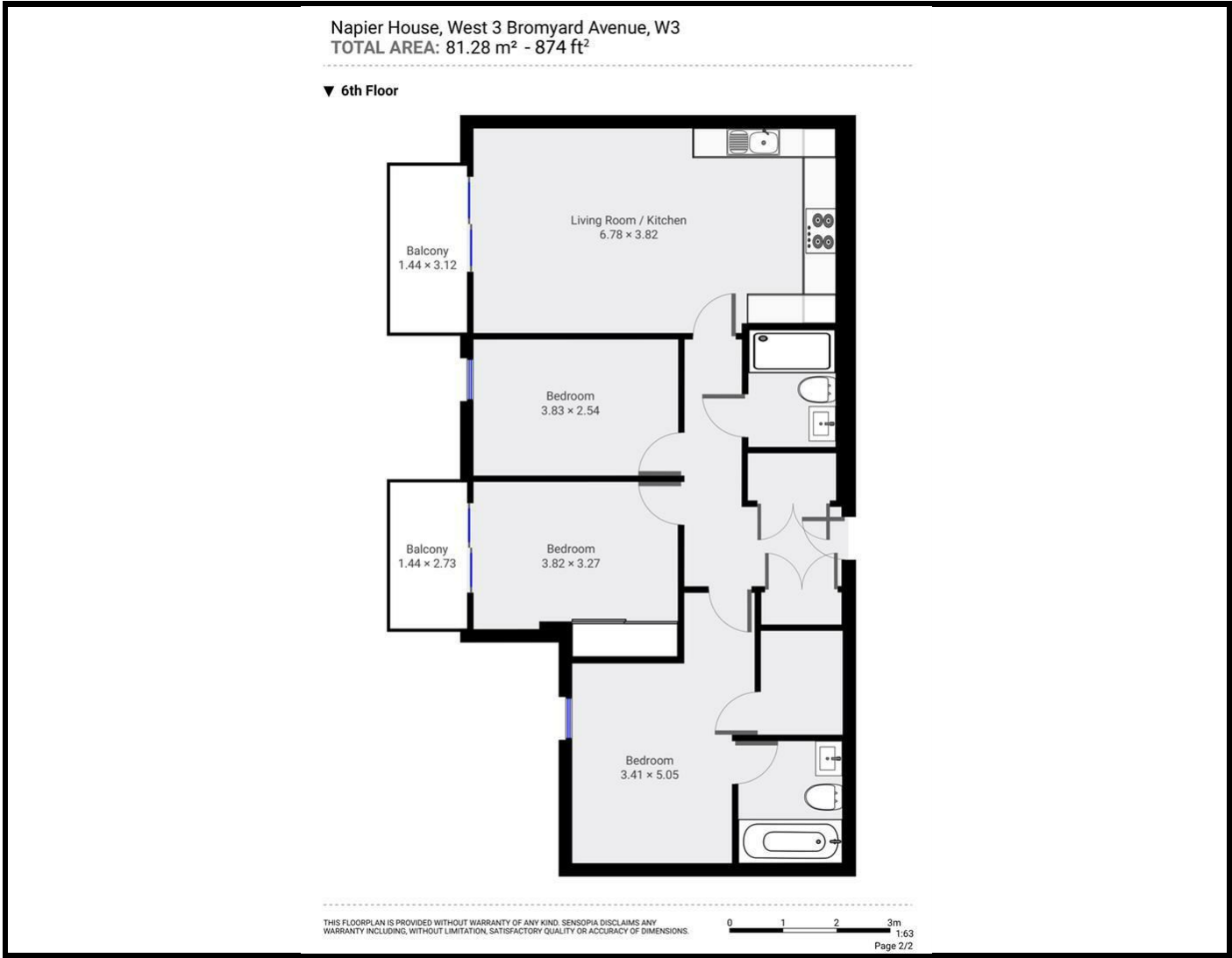
KEY FEATURES:

- THREE DOUBLE BEDROOM PENTHOUSE APARTMENT
- SIXTH FLOOR
- TWO PRIVATE BALCONIES
- GATED DEVELOPMENT
- EN-SUITE BATHROOM
- CONCIERGE
- NO UPPER CHAIN

A STUNNING SIXTH FLOOR THREE BEDROOM PENTHOUSE APARTMENT within a GATED DEVELOPMENT.

The property comprises of spacious open plan lounge / kitchen with INTEGRATED APPLIANCES, three double bedrooms with an en-suite bedroom to the main bedroom and separate family bathroom. Further advantages are the property has TWO PRIVATE BALCONIES and has access to CONCIERGE. The total floor area is approximately 874 SQ/FT (81.28 SQ/M)

Bromyard Avenue is located close to excellent transport links to Central London including East Acton Underground Station (Central Line - Zone 2). Local Authority London Borough of Ealing. Council Tax Band F.



Energy Efficiency Rating

	Current	Potential
Very energy efficient - lower running costs		
(92 plus) A		
(81-91) B		
(69-80) C	72	72
(55-68) D		
(39-54) E		
(21-38) F		
(1-20) G		
Not energy efficient - higher running costs		
England & Wales	EU Directive 2002/91/EC	

Environmental Impact (CO₂) Rating

	Current	Potential
Very environmentally friendly - lower CO ₂ emissions		
(92 plus) A		
(81-91) B		
(69-80) C		
(55-68) D		
(39-54) E		
(21-38) F		
(1-20) G		
Not environmentally friendly - higher CO ₂ emissions		
England & Wales	EU Directive 2002/91/EC	

Whilst every effort is made to give a fair description, the accuracy of these particulars is not guaranteed, neither do they constitute an offer or contract.

CHURCHILL & MATHESONS ESTATE AGENTS have not tested any apparatus, equipment, fitting or services and so cannot verify that they are in working order. The buyer is advised to obtain verification from their solicitor or surveyor. Measurements are correct to within +/-6 A sonic tape is used. None of the statements contained in these particulars or any of our properties are to be relied upon as a representation of fact.