

CAPITAL HEIGHTS

ESTATE AGENTS



Bouton Place
London, N1 1TR

Weekly Rental Of £795

Three bedrooms

Roof Terrace

Close to the station

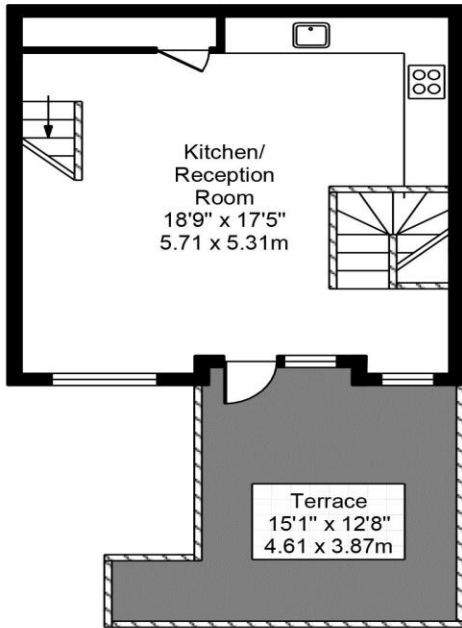
Furnished

Three Storey

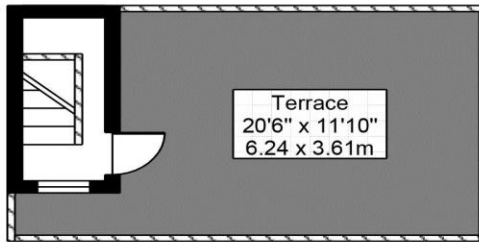
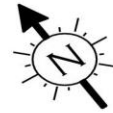
Town House

Capital Heights are pleased to bring to the market this stunning three double bedroom duplex town house in this luxurious development. The property boasts of being split over three floors, you have three massive double bedrooms, with one main bathroom and two en-suite shower rooms. As the property is split over three floors you get a huge open plan kitchen dining room on the top floor with your very own private roof terrace which can be accessed from the living room or dining room. This apartment is finished to the highest of standards, you will not be disappointed. Location Bouton Place is located just off Upper Street within easy walk of Angel, whilst being within the heart of Islington's Upper Street. The Almeida Theatre is around the corner and Highbury and Islington station is also close to hand

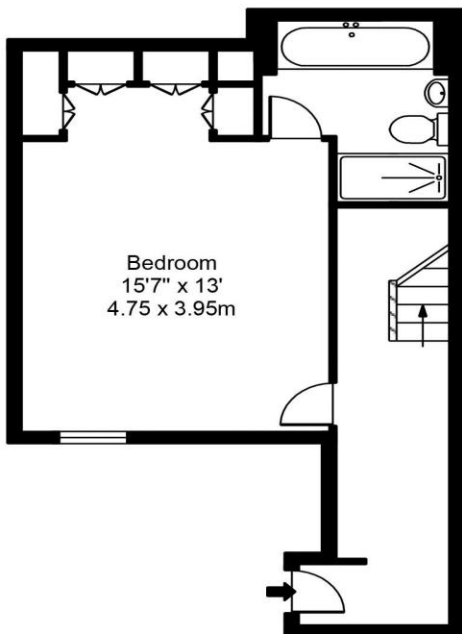




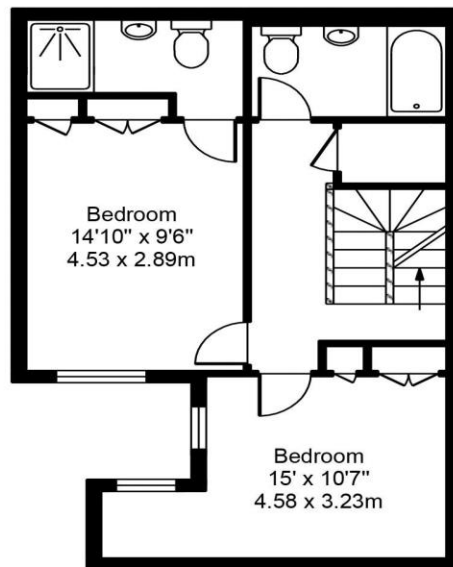
Second Floor



Top Floor



Ground Floor



First Floor

Gross Internal Area 1313 sq ft/ 122 sq meters

Whilst every attempt had been made to ensure the accuracy of the floorplan shown, all the measurements, positioning fixtures, fittings and any other data shown are an approximate interpretation for illustrative purposes only and are not for scale. No responsibility is taken for any error, omission, miss-statement or use of data shown.

Floor plan by: www.whitephotos.co.uk