



1 Horticultural Place, London W4 4JQ

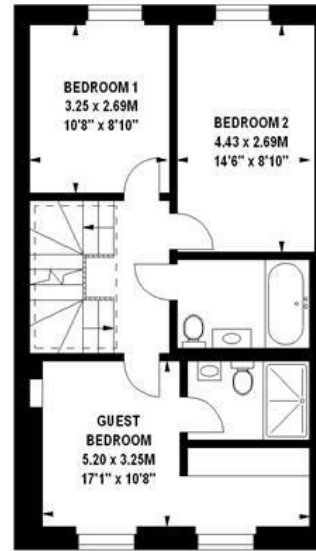
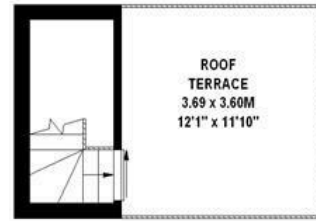
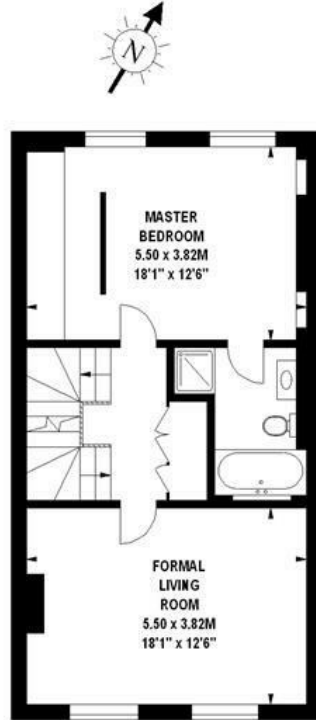
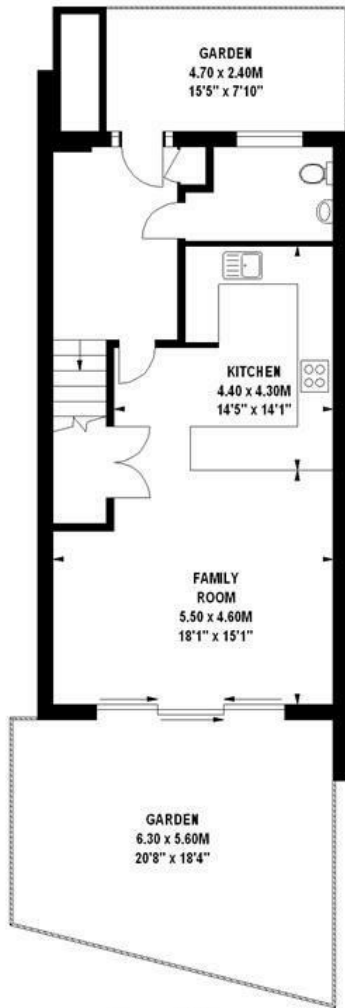
An exclusive development of six contemporary town houses located just south of Turnham Green, accessed via remote gates and with the added benefit of secure underground parking. Luxury master suite, Three further double bedrooms, Two further bathrooms, Ground entrance hall, Formal drawing room, Fully integrated kitchen/family room with Miele appliances, Siemens laundry appliances, Private south facing garden and amazing roof terrace with panoramic views, Secure underground parking, Automatic lift, Under floor heating, Programmable lighting, Integrated sound system, 10 Year BLP Warranty. Close proximity to numerous transport facilities. No chain.

- Exclusive development of six town houses
- Secure underground parking
- South facing garden
- Roof terrace with panoramic views
- Central Chiswick location
- No chain

Price Guide £1,900,000

Wedgewood Villas, W4

Approximate gross internal area
177.53 sq m / 1911 sq ft



The floor plan is not to scale and measurements and areas shown are approximate and therefore should be used for illustrative purposes only. The plan has been prepared in accordance with the RICS code of Measuring Practice and whilst we have confidence in the information produced, it must not be relied on. If there is any aspect of particular importance, you should carry out or commission your own inspection of the property.
Copyright of FeaturePRO.

Energy Efficiency Rating		Current	Potential
Very energy efficient - lower running costs			
(92 plus) A		91	92
(81-91) B			
(69-80) C			
(55-68) D			
(39-54) E			
(21-38) F			
(1-20) G			
Not energy efficient - higher running costs			
England & Wales		EU Directive 2002/91/EC	

Environmental Impact (CO ₂) Rating		Current	Potential
Very environmentally friendly - lower CO ₂ emissions			
(92 plus) A		91	92
(81-91) B			
(69-80) C			
(55-68) D			
(39-54) E			
(21-38) F			
(1-20) G			
Not environmentally friendly - higher CO ₂ emissions			
England & Wales		EU Directive 2002/91/EC	

5-7 Turnham Green Terrace, Chiswick, London, W4 1RG
Tel 020 8747 8800
E-mail sales@whitmanandco.com
Website www.whitmanandco.com