



Wendell Mews, London, W12 9BG

A unique three bedroom mews house set within this secluded development in the popular Wendell Park Area close to numerous transport and shopping facilities. Master bedroom with luxury ensuite and dressing room, Two further double bedrooms, Bathroom, 24' Reception room, Fully integrated kitchen, Cloakroom, Access to bike room, Polished oak flooring, Private front garden and large secluded roof terrace, Ideally situated within close proximity of excellent shopping, restaurant and transport facilities as well a good local primary schools.

- Popular Wendell Park Area
- Private front garden
- Private roof terrace
- Ideally located
- Unique mews house

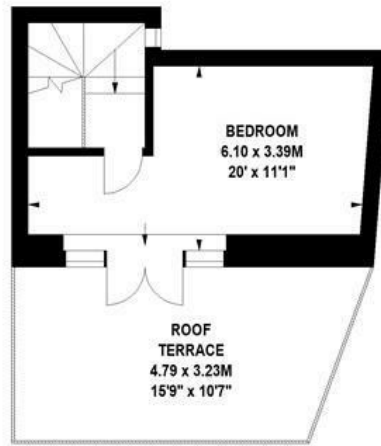
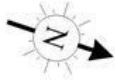
£995,000

Wendell Mews, W12

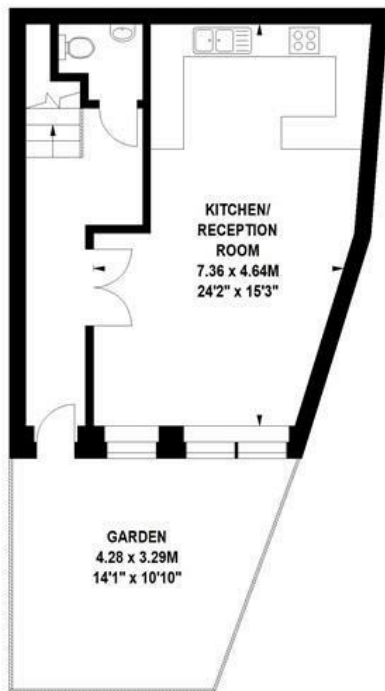
Approximate gross internal area

108.14 sq m / 1164 sq ft

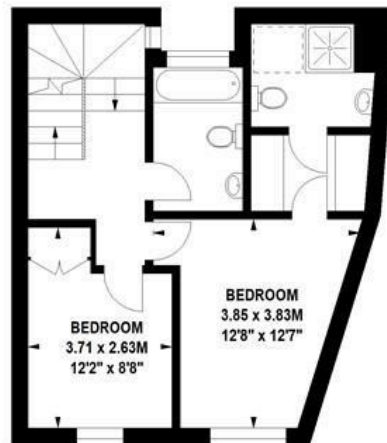
Key :
CH - Ceiling Height



236 sq ft
Second Floor



470 sq ft
Ground Floor



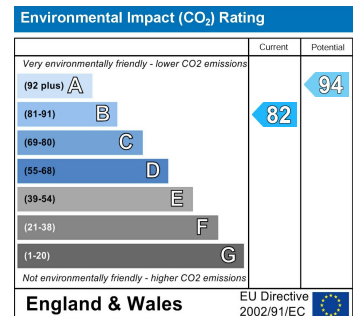
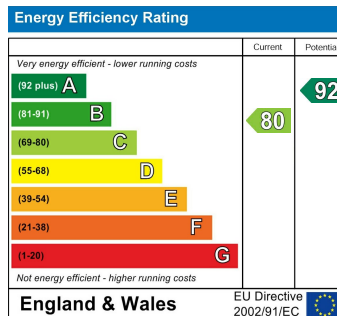
458 sq ft
First Floor

The floor plan is not to scale and measurements and areas shown are approximate and therefore should be used for illustrative purposes only. The plan has been prepared in accordance with the RICS code of Measuring Practice and whilst we have confidence in the information produced, it must not be relied on. If there is any aspect of particular importance, you should carry out or commission your own inspection of the property.
Copyright of FeaturePRO.

Tenure - Freehold

Local Authority - Hammersmith & Fulham

Council Tax - Band G (£2520.19 pa)



5-7 Turnham Green Terrace, Chiswick, London, W4 1RG

Tel 020 8747 8800

E-mail sales@whitmanandco.com

Website www.whitmanandco.com



MISREPRESENTATION ACT 1967

Whitman & Co. for themselves and for the vendors give notice that these particulars do not constitute any part of, an offer of contract. All statements contained in these particulars are made without responsibility on the part of Whitman & Co. or the vendor. None of the statements contained in these particulars is to be relied upon as statements or representations of facts. Any intending purchaser must satisfy himself by inspection or otherwise as to the correctness of each of the statements contained in these particulars. The vendor does not make or give, and neither Whitman & Co. or any person in their employment has any authority to make or give, any representation or warranty whatever in relation to the property.