

CAPITAL HEIGHTS

ESTATE AGENTS



Manhattan Loft Gardens, 20 International Way
London, E20 1GQ

Weekly Rental Of £600.00

Located on the 12th floor

Furnished

Access to resident only terrace

3 Restaurants on site

Two large bedrooms

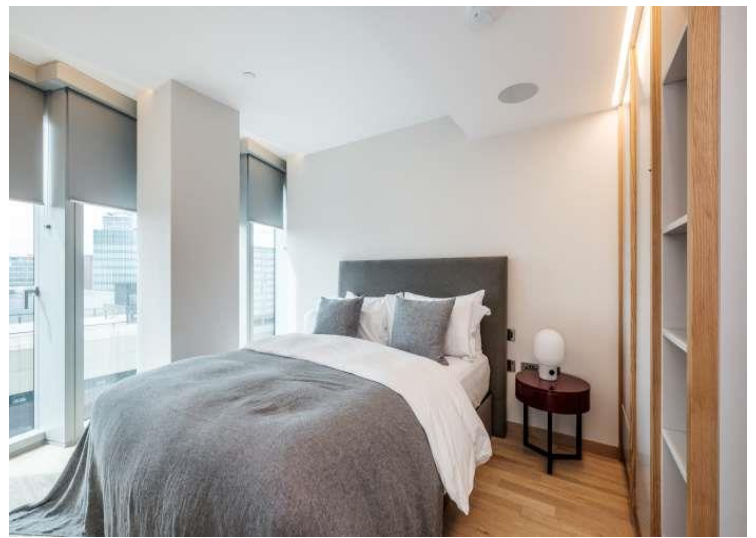
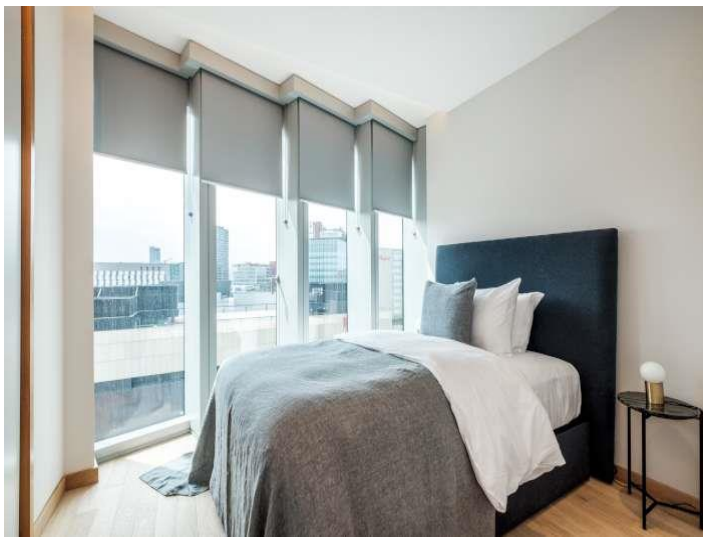
24-hour concierge team and on-site property management

Capital Heights Estate Agents, 113 East London Works, London, E1 1DU
Tel: 0207 078 0077, Email: info@capitalheights.co.uk
www.capitalheights.co.uk, Property Ref CH2271

Rent a Loft here

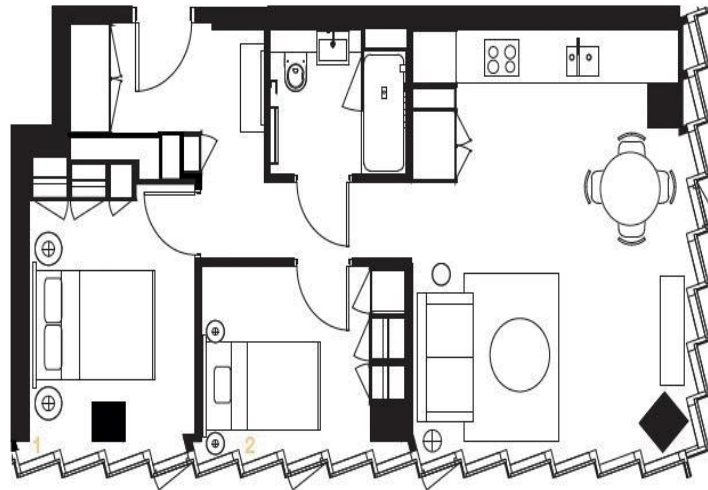
- The development is situated in the heart of Stratford. Each apartment is individually designed, all apartments come fully furnished.
- Available on a long term rental. All apartments come with Wi-Fi included with the rental.
- Floor to ceiling windows with eye catching views across London.
- The interior is of the highest quality, each apartment has oak flooring, bespoke furniture, oversized bathrooms, rainforest showers, and fully integrated appliances – including Siemens washer dryer, dishwasher, a huge American-style fridge freezer and bespoke kitchen pack.
- Dedicated 24-hour concierge team
- On-site lettings & property management team who will provide everything you need and anything else you might imagine.
- You get access to the complimentary monthly housekeeping together with resourceful extras such as grocery stocking and laundry service to dog walking and dry cleaning.
- You get full access to The Stratford's hotel services – including The Stratford Brasserie, Mezzanine lounge, state-of-the art meeting rooms and 24-hour gym.

Located just six minutes to King's Cross on the high-speed Javelin train, Stratford boasts exceptional transport links to anywhere in the city and major airports via London Underground, Overground, National Rail, DLR and the imminent Elizabeth Line.



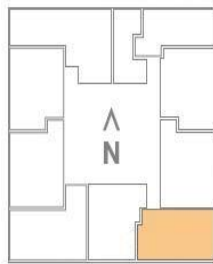
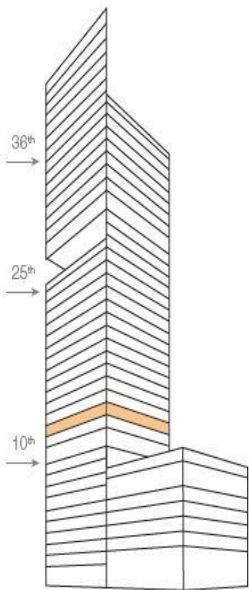
**Two
Bedroom
Loft**

**Level 12
64.8 sq m
(698 sq ft)**



Low Rise Essex
Thames River

Millenium Dome
Canary Wharf



Description

Spacious, fully furnished two bedroom Loft with an open-plan kitchen, living and dining area, bathroom. Dual aspect views facing South and East.

Rooms

Dimensions (approximate)

Living Room & Kitchen:	5.7m X 4.6m	(18'7" x 15'1")
Bedroom 1:	3.6m X 2.7m	(11'8" x 8'9")
Bedroom 2:	3.4m X 2.5m	(11'1" x 8'2")

The information (including all CGS, photographs and plans) contained in this brochure are intended to give a general impression of the homes referred to in it and should not be relied upon as accurate or specific. The dimensions are approximate only and may vary. Some details may have changed since printing due to the continually updated improvement of design features. While the developers Millenium Loft Gardens Ltd ("MLG") and its agent Creative Property (UK) LLP ("CP") have endeavoured to ensure the accuracy of the information provided, they cannot accept any liability for any errors, omissions or variations in the particulars or any loss arising from the use of or action taken from such information. Please check with the developers or its agent regarding all aspects of importance to you and seek appropriate legal advice. MLG and CP give notice that: (1) the particulars set out in this brochure are produced in good faith and are intended to be used as a general guide only and do not constitute part of any offer or contract; and (2) no person in the employment of MLG or CP or their associated companies or other agents has any authority to make or give any representation or warranty whatsoever in relation to this property and this brochure does not constitute a representation or warranty and must not be relied upon as such. Issue date: May 2019

