



**Capital Homes**  
Estate Agents & Valuers

**108 Great Cambridge Road, London N17 8LT**  
**£490,000**







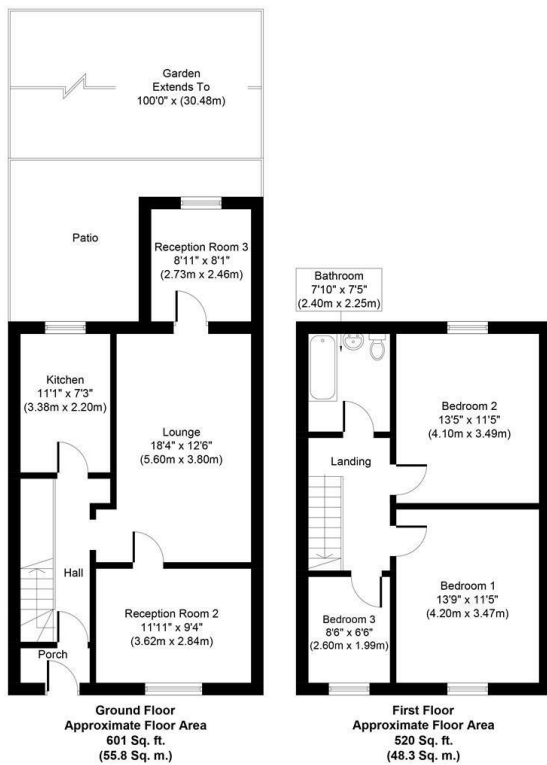
Available for sale is this spacious, 1930's three-bedroom, terraced house with driveway. The property comprises of three receptions, fully fitted kitchen, sufficient storage cupboards, three bedrooms, family bathroom and a huge rear garden.

This ideal family home is conveniently situated near to excellent transport links, the A10 dual carriageway, reputable schools, local amenities and is within a short drive to both Wood Green & White Hart Lane station.

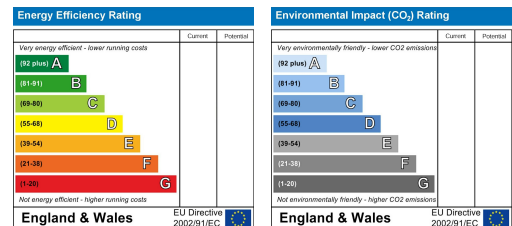


Ideally, the property benefits further as the area is undergoing renovation as Tottenham Hotspur Football Club are creating new jobs and opportunities.

To arrange your viewing, please contact Capital Homes on 0208-342-5555, early viewings highly recommended in order to avoid disappointment!!



Whilst every attempt has been made to ensure the accuracy of the floor plan contained here, measurements of doors, windows, rooms and any other items are approximate and no responsibility is taken for any error, omission, or mis-statement. This plan is for illustrative purposes only and should be used as such by any prospective purchaser or tenant. The services, systems and appliances shown have not been tested and no guarantee as to their operability or efficiency can be given.  
Copyright V380 Ltd 2021 | www.houseviz.com



1 Turnpike Lane  
London  
N8 0EP

0208 342 5555  
info@capitalhomesestates.co.uk  
www.capitalhomesestates.co.uk

Agents Note: Whilst every care has been taken to prepare these particulars, they are for guidance purposes only. All measurements are approximate are for general guidance purposes only and whilst every care has been taken to ensure their accuracy, they should not be relied upon and potential buyers/tenants are advised to recheck the measurements