



Fielding Road, Chiswick, W4 1DB

A newly renovated, end of terrace, 3 double bedroom house with a large private garden, on one of Chiswick's premier roads. A short walk from Turnham Green tube station and the amenities offered by Chiswick High Road. Wider than average plot, with three reception rooms, kitchen and a separate utility area offering excellent practicality as well as a good standard of finish throughout. Available now, unfurnished.

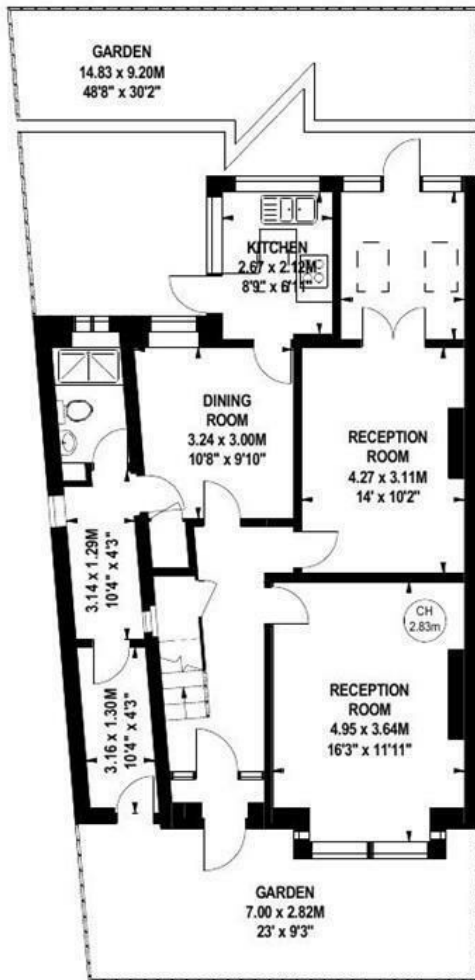
- Recently renovated
- 3 Double Bedrooms
- Wider than Average Plot
- Large Private Garden
- Unfurnished
- EPC E
- Ealing Council Tax Band G

£690 Per Week

Fielding Road, W4

Approximate gross internal area

133.40 sq m / 1436 sq ft

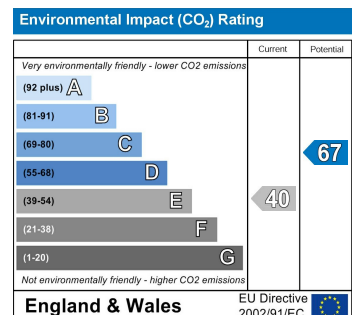
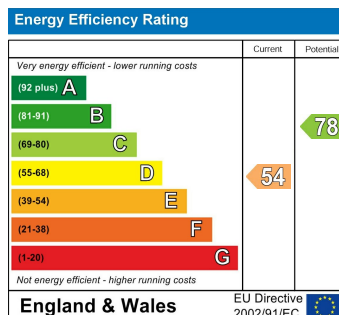


868 sq ft
Ground Floor



568 sq ft
First Floor

The floor plan is not to scale and measurements and areas shown are approximate and therefore should be used for illustrative purposes only. The plan has been prepared in accordance with the RICS code of Measuring Practice and whilst we have confidence in the information produced, it must not be relied on. If there is any aspect of particular importance, you should carry out or commission your own inspection of the property.
Copyright of FeaturePRO.



5-7 Turnham Green Terrace, Chiswick, London, W4 1RG

Tel 020 8747 8800

E-mail lettings@whitmanandco.com

Website www.whitmanandco.com

PrimeLocation.com

Zoopla.co.uk

rightmove

OnTheMarket.com

MISREPRESENTATION ACT 1967

Whitman & Co. for themselves and for the vendors give notice that these particulars do not constitute any part of, an offer of contract. All statements contained in these particulars are made without responsibility on the part of Whitman & Co. or the vendor. None of the statements contained in these particulars is to be relied upon as statements or representations of facts. Any intending purchaser must satisfy himself by inspection or otherwise as to the correctness of each of the statements contained in these particulars. The vendor does not make or give, and neither Whitman & Co. or any person in their employment has any authority to make or give, any representation or warranty whatever in relation to the property.