



### Devey Close, Kingston Upon Thames, Surrey KT2 7DZ

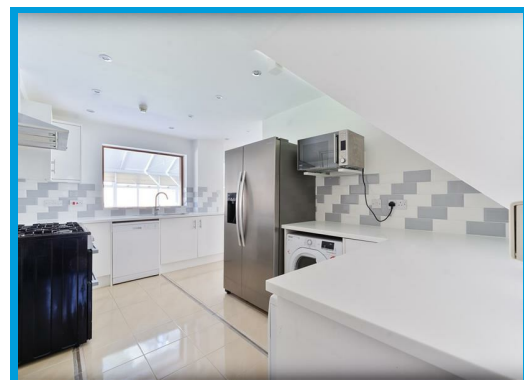
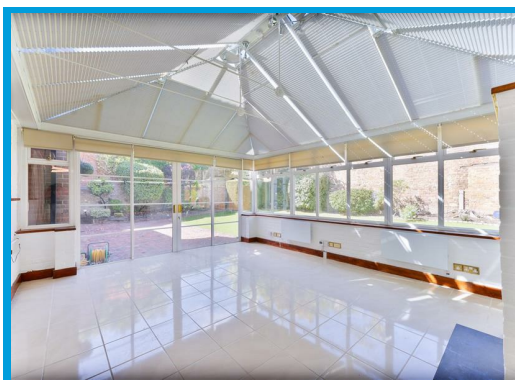
£6,000 PCM

Cavender Estate Agents proudly present this fantastic four-bedroom detached house in an exclusive gated development in the Coombe Hill area of Kingston Upon Thames.

This stunning property offers ample living space downstairs. With two reception rooms, a large conservatory, maids rooms and a sweeping kitchen. With lots of natural light flowing throughout & a large private garden perfect for relaxing.

The first floor consists of the master bedroom, which has a balcony and en-suite with a walk-in shower, two well-sized double bedrooms, one with a generously sized en-suite and balcony, along with a communal bathroom. Most rooms have lots of built-in storage.

The second floor offers another large bedroom with an en-suite, lots of eaves storage and an excellent space for a home office.





TOTAL FLOOR AREA : 2094 sq.ft. (194.5 sq.m.) approx.

Whilst every attempt has been made to ensure the accuracy of the floorplan contained here, measurements of doors, windows, rooms and any other items are approximate and no responsibility is taken for any error, omission or mis-statement. This plan is for illustrative purposes only and should be used as such by any prospective purchaser. The services, systems and appliances shown have not been tested and no guarantee as to their operability or efficiency can be given.

Made with Metreplan v2022



| Energy Efficiency Rating                    |                         |
|---|-------------------------|
|   | Potential               |
| Very energy efficient - lower running costs |                         |
| (92 plus) <b>A</b>                          |                         |
| (81-91) <b>B</b>                            |                         |
| (69-80) <b>C</b>                            |                         |
| (55-68) <b>D</b>                            |                         |
| (39-54) <b>E</b>                            |                         |
| (21-38) <b>F</b>                            |                         |
| (1-20) <b>G</b>                             |                         |
| Not energy efficient - higher running costs |                         |
| England & Wales                             | EU Directive 2002/91/EC |

| Environmental Impact (CO <sub>2</sub> ) Rating                  |                         |
|---|-------------------------|
|   | Potential               |
| Very environmentally friendly - lower CO <sub>2</sub> emissions |                         |
| (92 plus) <b>A</b>  |                         |
| (81-91) <b>B</b>  |                         |
| (69-80) <b>C</b>  |                         |
| (55-68) <b>D</b>  |                         |
| (39-54) <b>E</b>  |                         |
| (21-38) <b>F</b>  |                         |
| (1-20) <b>G</b>   |                         |
| Not environmentally friendly - higher CO <sub>2</sub> emissions |                         |
| England & Wales   | EU Directive 2002/91/EC |

