

# OFFICE TO LET

City &  
Counties  
— Commercial —

## WANDSWORTH



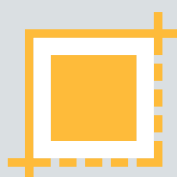
Unit 1, Rear Of 332 Balham High Road, London SW17 7AA

Price £10,000 Per Annum



Property Type

**OFFICE**



Size

**2,594 SQFT**



Tenure

**LEASEHOLD**



Borough

**WANDSWORTH**



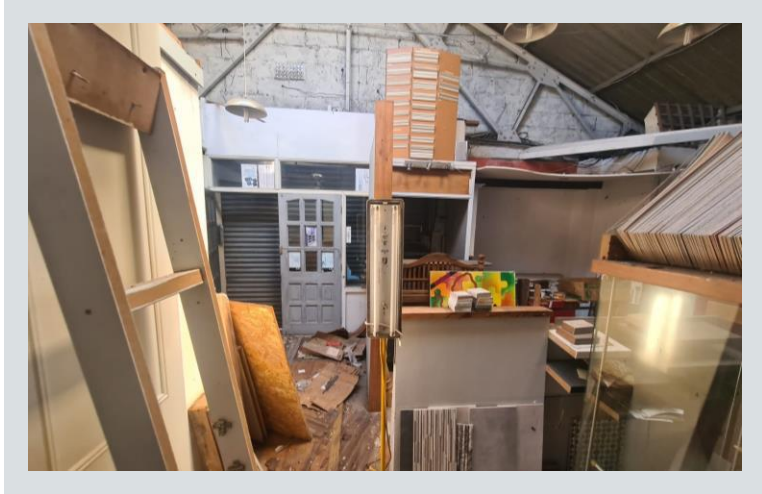
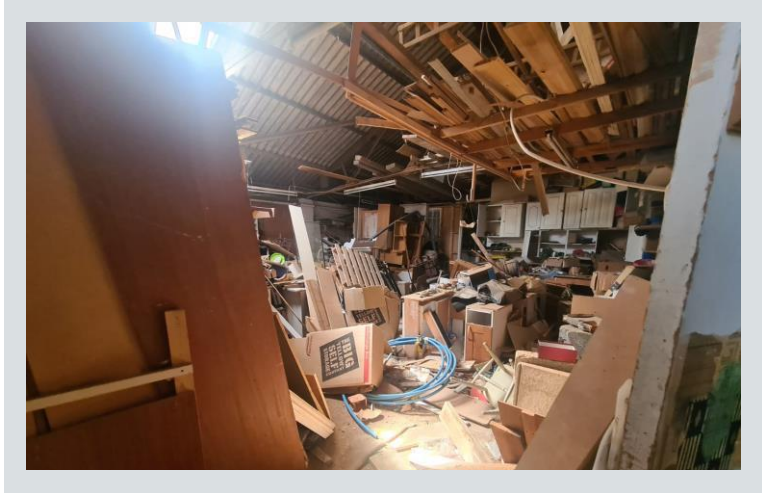
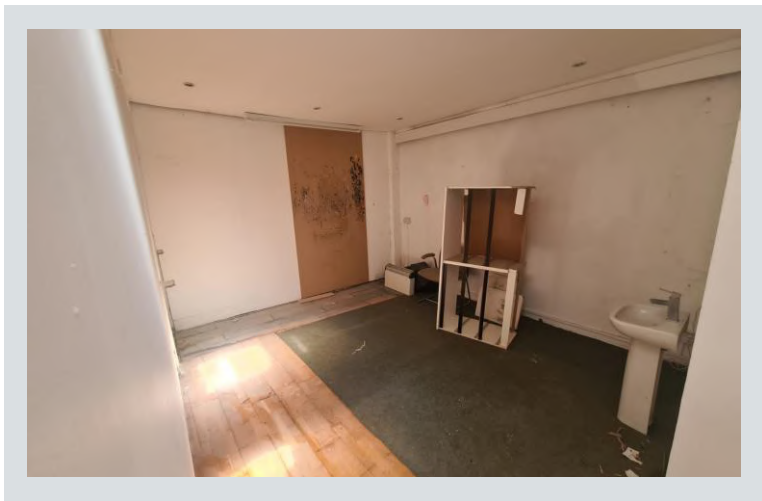
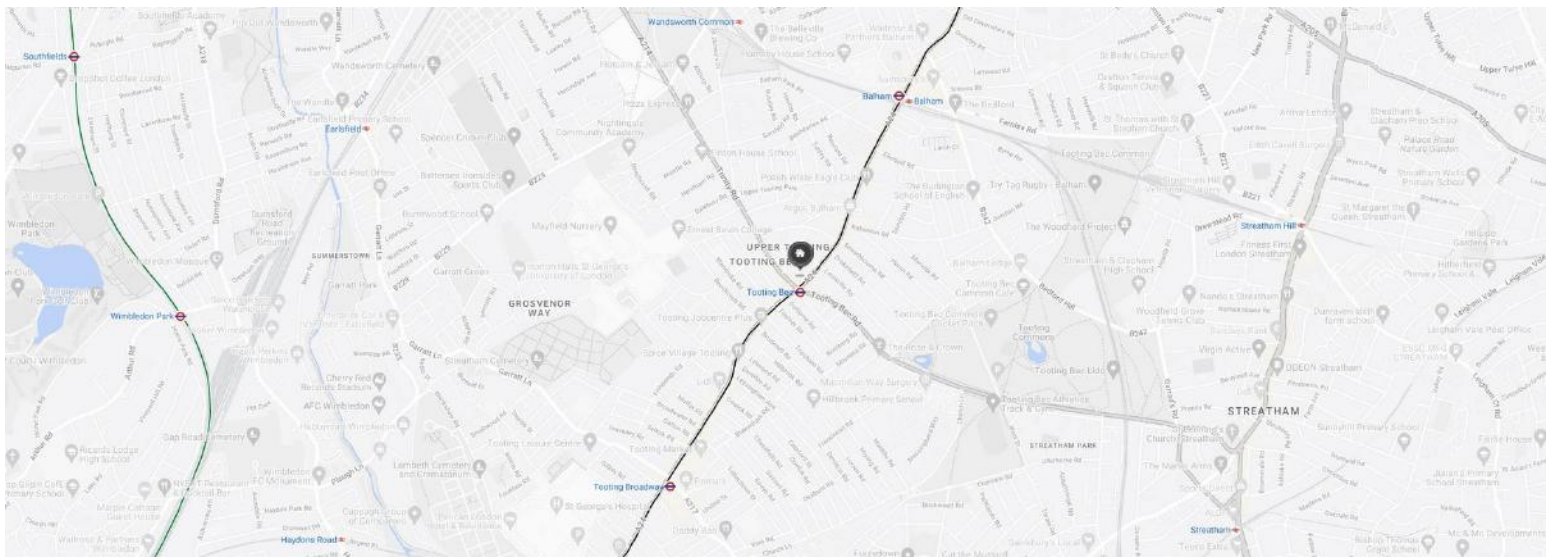
Recent Planning




**NO**



Existing Use

**CLASS E**



 <b>Tenanted</b> <b>NO</b>	 <b>Transport Links</b> <b>Tooting Bec Underground (0.02 miles)</b> <b>Balham (0.6 miles)</b> <b>Balham Underground (0.6 miles)</b>	 <b>Local Amenities</b> <b>Balham Leisure Centre (0.2 miles)</b> <b>Aldi (0.3 miles)</b> <b>Fitness First Balham (0.4 miles)</b>
 <b>VAT Applicable</b> <b>NO</b>	 <b>Rateable Value</b> <b>£5,863.25</b>	 <b>EPC Rating</b> <b>E</b>

### Additional Information

Unit 1 is situated on the ground floor of the building which sits at the rear of 332 Balham High Road. The premises measures approximately 2,594 sqft in size. The unit has been partly partitioned with toilets, a kitchenette, and a stockroom.

The landlord is offering competitive prices with flexible leases.

All enquiries are welcome, and viewings are strictly by appointment only.

# CONTACT US



## Nathan King

SENIOR PROPERTY CONSULTANT

E: [nathan@cityandcounties.com](mailto:nathan@cityandcounties.com)

T: 020 8106 8666



## Latif Acisu

PROPERTY CONSULTANT

E: [latif@cityandcounties.com](mailto:latif@cityandcounties.com)

T: 020 8106 8666



## Bogdan Anghel

PROPERTY CONSULTANT

E: [bogdan@cityandcounties.com](mailto:bogdan@cityandcounties.com)

T: 020 8106 8666



Unit 2, 2 Delacourt Road London SE3 8XA

T: 020 8106 8666 E: [info@cityandcounties.com](mailto:info@cityandcounties.com) Whatsapp: 07523 863 026

[www.cityandcounties.com](http://www.cityandcounties.com)

- These particulars are only a general outline for the guidance of intending purchasers or lessees and do not constitute in whole or in part an offer or a Contract.
- Reasonable endeavours have been made to ensure that the information given in these particulars is materially correct, but any intending purchaser or lessee should satisfy themselves by inspection, searches, enquiries, and survey as to the correctness of each statement.
- All statements in these particulars are made without responsibility on the part of City & Counties Commercial or the vendor or lessor.
- No statement in these particulars is to be relied upon as a statement or representation of fact.
- Neither City & Counties Commercial LLP nor anyone in its employment or acting on its behalf has authority to make any representation or warranty in relation to this property.
- Nothing in these particulars shall be deemed to be a statement that the property is in good repair or condition or otherwise nor that any services or facilities are in good working order.
- Photographs may show only certain parts and aspects of the property at the time when the photographs were taken, and you should rely on actual inspection.
- No assumption should be made in respect of parts of the property not shown in photographs.
- Any areas, measurements or distances are only approximate.
- Any reference to alterations or use is not intended to be a statement that any necessary planning, building regulation, listed building or any other consent has been obtained.
- Amounts quoted are exclusive of VAT if applicable.

IMPORTANT: we would like to inform prospective purchasers that these sales particulars have been prepared as a general guide only. A detailed survey has not been carried out, nor the services, appliances and fittings tested. Room sizes should not be relied upon for furnishing purposes and are approximate. If floor plans are included, they are for guidance only and illustration purposes only and may not be to scale. If there are any important matters likely to affect your decision to buy, please contact us before viewing the property.