

CAPITAL HEIGHTS

ESTATE AGENTS



Chicksand Street
London, E1 5AE

Weekly Rental Of £345.00

Open plan kitchen

Furnished

Large living room

Sun room/ Balcony

Capital Heights Estate Agents, 113 East London Works, London, E1 1DU
Tel: 0207 078 0077, Email: info@capitalheights.co.uk
www.capitalheights.co.uk, Property Ref CH2245

We are very excited to bring to the market this stunning one bedroom apartment in the heart of the City. The property offers a large bedroom, a lovely bathroom and a sunroom. Offered furnished, this is ideal for someone who works in the city or need access to the Liverpool Station. It's walking distance to transport links, restaurants & shops. Also very close by to Spitalfields Market. Transport links nearby include Aldgate East station (District & Hammersmith & City lines), Whitechapel station (District & Hammersmith & City lines & London Overground lines), Aldgate station (Circle and Metropolitan & City lines)





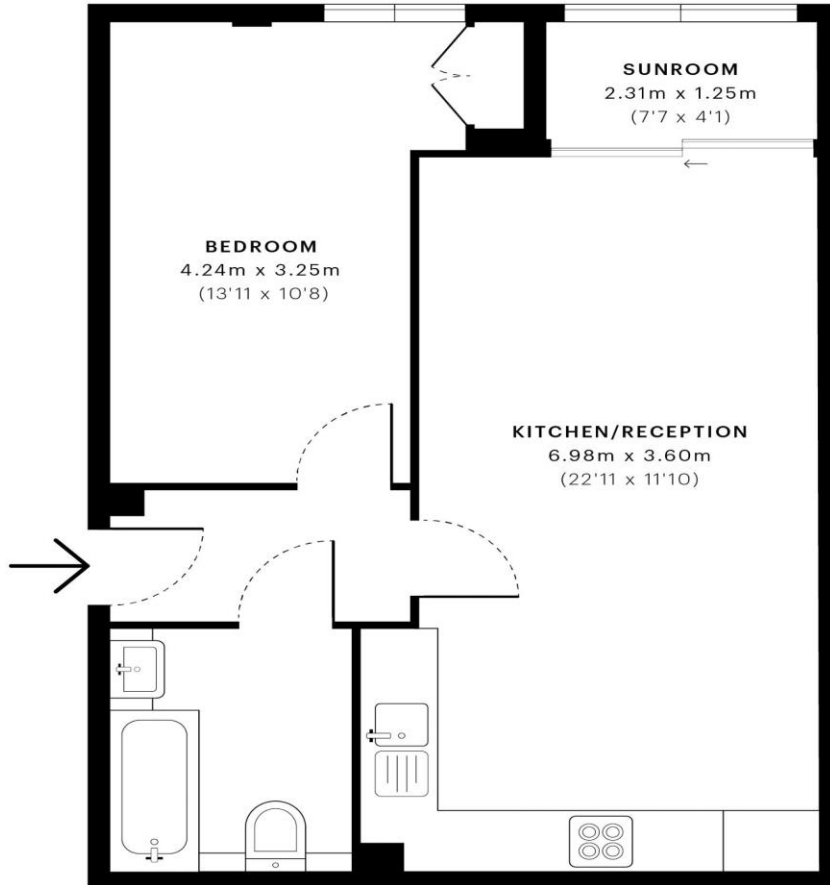
Novem House, E1

CAPTURE DATE
11/10/2019

LASER SCAN POINTS
21,747,362

GROSS INTERNAL AREA
46.0 Sqm / 495.7 Sqft

z ←



— Ground Floor

 GROSS INTERNAL AREA
The footprint of the property
46.0 Sqm / 495.7 Sqft

 NET AREA (INTERNAL)
Excludes walls and external features
44.1 Sqm / 474.7 Sqft

 EXTERNAL STRUCTURAL FEATURES
Balconies, terraces, verandas etc.
0.0 Sqm / 0.0 Sqft

 RESTRICTED HEAD HEIGHT
Limited use area under 1.5m
0.0 Sqm / 0.0 Sqft



Spec floor plans are produced in accordance with the Royal Institution of Chartered Surveyors' Property Measurement Standards. Plots and gardens are illustrative only and are excluded from all area calculations. Due to rounding, numbers may not add up precisely. All measurements shown for the individual room lengths and widths are the maximum points of measurements captured in the scan.



IPMS 3B RESIDENTIAL
46.0 Sqm / 495.7 Sqft

IPMS 3C RESIDENTIAL
44.1 Sqm / 474.7 Sqft

SPEC ID
5d9f173330921809f7038075