



## FOUR BEDROOM FAMILY HOME LOCATED IN A QUIET CLOSE

---

Bennett Close, Northwood, Middlesex, HA6 1EP





# FOUR BEDROOM FAMILY HOME LOCATED IN A QUIET CLOSE

Bennett Close, Northwood, Middlesex, HA6 1EP

**REFURBISHED • OPEN PLAN LIVING •  
PRIVATE GARDEN • MAIN BEDROOM WITH  
ENSUITE • FURTHER THREE BEDROOMS •  
FAMILY BATHROOM • LIGHT AND SPACIOUS  
• DOWNSTAIRS WC • AMPLE STORAGE •  
RESIDENTS PARKING • QUIET CLOSE LOCATION**

## Description

A fantastic opportunity to acquire this spacious four bedroom two bathroom family home positioned in a quiet close off Chester Road.

The property provides light and bright accommodation and offers well proportioned living accommodation throughout. To the ground floor is the open plan living/dining/ kitchen which has direct access to the garden via patio doors, there is also a guest w.c. To the first floor is a principle bedroom with an en suite bathroom / w.c, double second bedroom as well as a separate bathroom / w.c. To the second floor are two further double bedrooms. There is ample parking for residents in the bays and on the road itself.







## Location

Northwood provides a range of shopping facilities, a Waitrose supermarket, restaurants and the Metropolitan Line Station providing access to Baker Street and the city beyond. The area has a range of both private and state schools. Places of worship and recreational facilities are also well catered for in the surrounding area and major motorway links to M25 and M1 are nearby.

## Additional Information

Guide Price: Offers in excess of £625,000

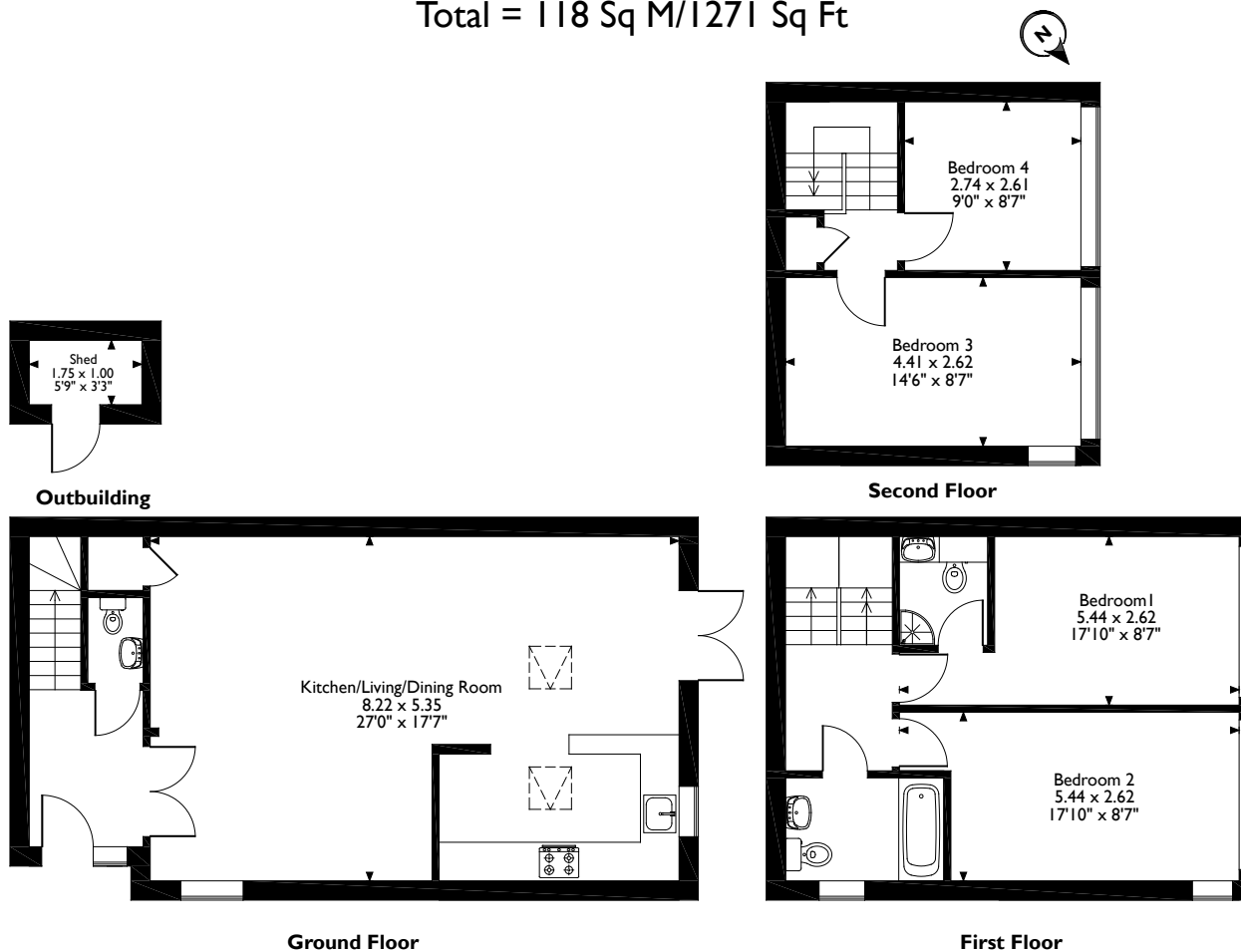
Tenure: Freehold

Local Authority: London Borough of Hillingdon

Energy Efficiency Rating: Band C



Bennett Close, Northwood, Middlesex  
Approximate Gross Internal Area  
Main House = 116 Sq M/1248 Sq Ft  
Outbuilding = 2 Sq M/23 Sq Ft  
Total = 118 Sq M/1271 Sq Ft



Please note that the location of doors, windows and other items are approximate and this floorplan is to be used for illustrative purposes only. Unauthorized reproduction is prohibited.



Address 7 Clive Parade, Northwood, Middlesex, HA6 2QF

Tel: 01923 835355 Northwood@robsonswb.com

[www.robsonswb.com](http://www.robsonswb.com)

www.  
the  
londonoffice.co.uk  
40 ST JAMES'S PLACE SW1