

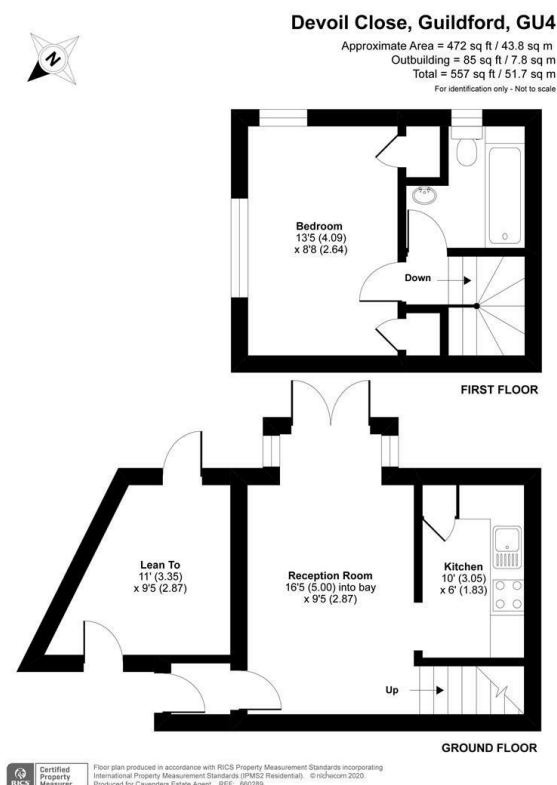


28 Devoil Close

, Guildford, GU4 7FG

Asking Price £270,000

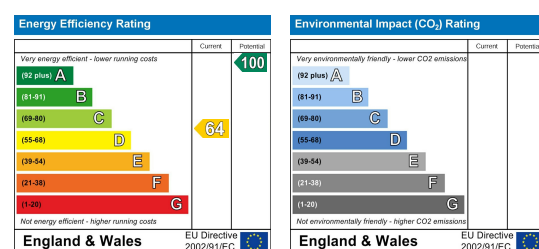
Floor Plan



Area Map



Energy Efficiency Graph



Viewing

Please contact us on 01483 457728 if you wish to arrange a viewing appointment for this property or require further information.

- End of terrace
- Private rear garden
- Close to local amenities
- One bedroom
- Allocated parking
- Easy access to A3



Situated on a popular residential development with excellent road connections nearby via the A3 to the M25 and with Aldi, Sainsbury's and local shops at Kingpost Parade in Burpham, this one bedroom, with private garden is perfect for either a first time purchase or investors.



These particulars, whilst believed to be accurate are set out as a general outline only for guidance and do not constitute any part of an offer or contract. Intending purchasers should not rely on them as statements of representation of fact, but must satisfy themselves by inspection or otherwise as to their accuracy. No person in this firm's employment has the authority to make or give any representation or warranty in respect of the property.