



2, 1a Turnpike Lane, London N8 0EP
£1,399 Per Calendar Month





Capital Homes are delighted to offer this luxury ground floor 2 bedroom apartment to rent.

The property has been refurbished to an exemplary standard with no expense spared. The apartment comprises one large double bedroom, one reasonable sized single bedroom, a well-designed large fully tiled bathroom and a large open plan kitchen/living area fully equipped with integrated dishwasher, washing machine and microwave. Comfort cooling which can be digitally controlled is a feature in the apartment as well as free 250 mb fibre optic wifi.

The apartment is accessed via a coded entrance gate and secondary internal coded door offering maximum security for our residents, there is also cctv covering all common areas. The apartments are situated just 150 yards from Turnpike Lane Underground Station in this popular residential area moments from the many local shopping/travelling facilities which Wood Green has to offer.

Alexandra Palace is 1.6 miles away from the property. Further benefits are that the property is situated within a 15 minute train ride to Central London.

Viewings can be arranged via the sole agents Capital Homes. Comprehensive references required, fully managed by Capital Homes.

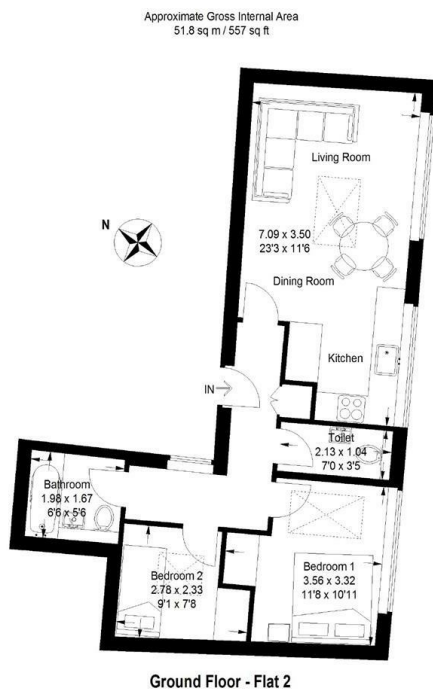


Illustration for identification purposes only, measurements are approximate, not to scale.

Energy Efficiency Rating		Environmental Impact (CO ₂) Rating	
Current	Potential	Current	Potential
Very energy efficient - lower running costs		Very environmentally friendly - lower CO ₂ emissions	
(92-101) A		(82-91) A	
(81-91) B		(69-80) B	
(69-80) C		(55-68) C	
(55-68) D		(39-54) D	
(39-54) E		(21-38) E	
(21-38) F		(11-20) F	
(1-20) G			
Not energy efficient - higher running costs		Not environmentally friendly - higher CO ₂ emissions	
England & Wales		England & Wales	
EU Directive 2002/91/EC		EU Directive 2002/91/EC	

1 Turnpike Lane
London
N8 0EP

0208 342 5555
info@capitalhomesestates.co.uk
www.capitalhomesestates.co.uk

Agents Note: Whilst every care has been taken to prepare these particulars, they are for guidance purposes only. All measurements are approximate are for general guidance purposes only and whilst every care has been taken to ensure their accuracy, they should not be relied upon and potential buyers/tenants are advised to recheck the measurements