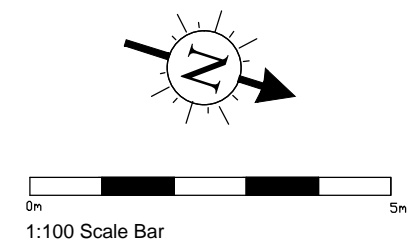
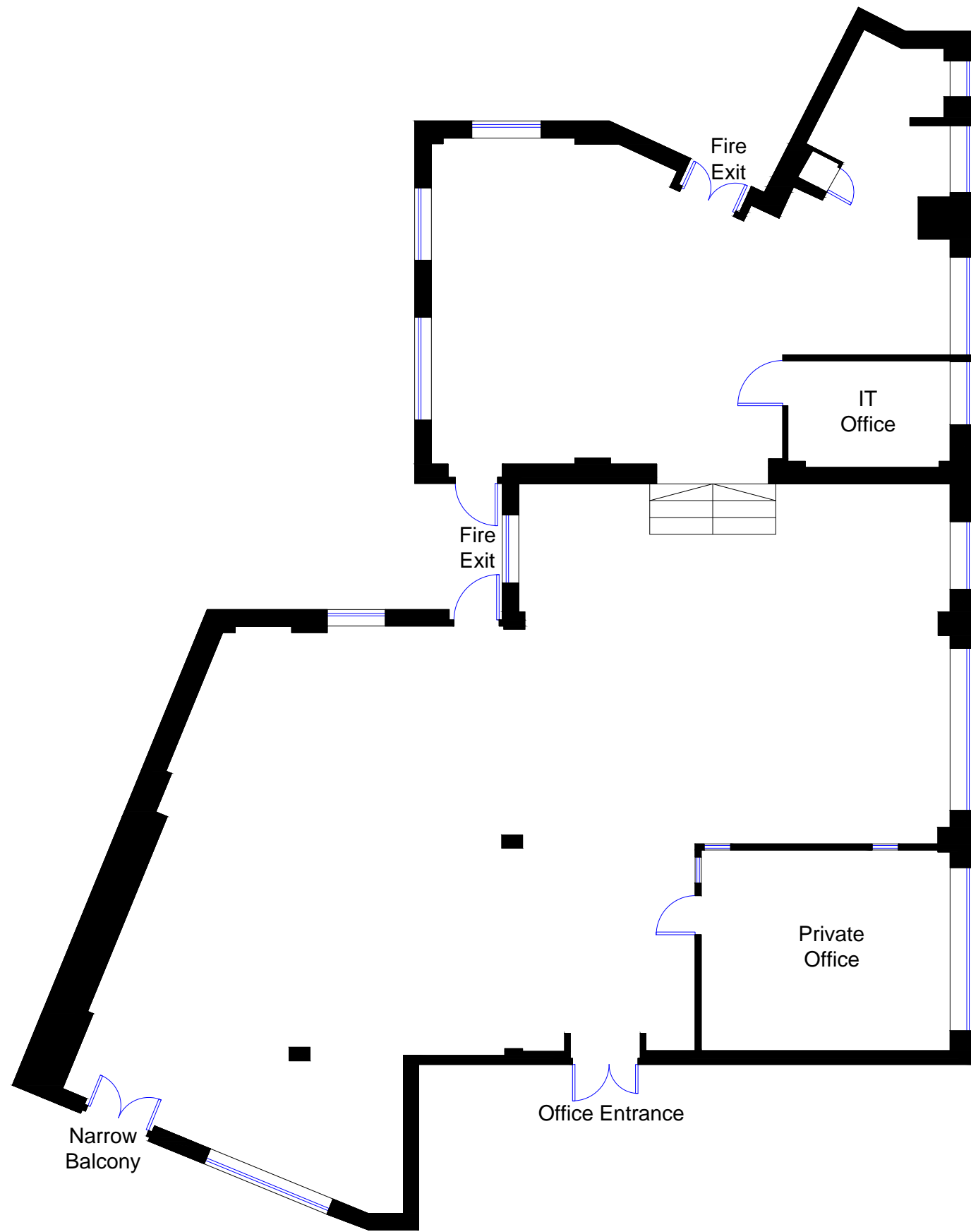


Fourth Floor



General Notes		
Office Net Internal Areas		
Fourth Floor Office	227.1sqm / 2,444sqft	
Second Floor Office	232.6sqm / 2,504sqft	
Total Office NIA	459.7sqm / 4,948sqft	
Office Gross Internal Areas		
Fourth Floor Office	232.5sqm / 2,503sqft	
Second Floor Office	238.4sqm / 2,566sqft	
Total Office GIA	470.9sqm / 5,069sqft	

No.	Revision/Issue	Date
1	Issue	27/09/10

Firm Name and Address

Sterling Temple Ltd
 11 Malvern House
 15-16 Nassau Street
 London
 W1W 7AB

Project Name and Address

2nd & 4th Floors
 5-13 Hatton Wall
 London
 EC1N 8HX

Project	Sheet
10.09.231	Fourth Floor Plan
Date	
September 27th 2010	
Scale	
1:100 A3	