



35 Wavendon Avenue, Chiswick W4 4NT

Asking Price £2,995,000

WHITMAN & CO.

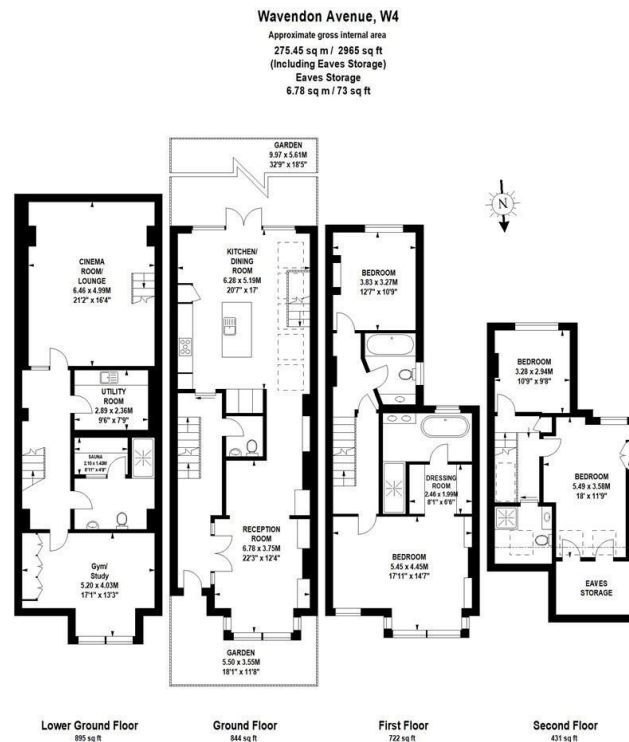
SALES · LETTINGS · COMMERCIAL

THE PROPERTY

Put simply, this meticulously renovated home on one of Chiswick's most prestigious streets, is the definition of super-luxe. From its lavish master suite, with dressing room, free-standing bath and wet room, to the full basement extension complete with gym and sauna, it offers the perfect balance of entertaining and living space.

The house is arranged over four floors and retains many of the original Edwardian features. Accommodation comprises: landscaped front garden, elegant entrance hall, double reception room with whiskey bar, huge kitchen/breakfast room, 21' x 16'4 cinema/living room, gym/study, sauna room with large walk in shower, utility room, cloakroom, full width master bedroom with dressing room and ensuite bathroom, three further bedrooms on the upper floors with two further bathrooms, landscaped garden. No expense has been spared in the creation of this fabulous property and viewing is highly recommended.

Chiswick is a thriving area within 25 minutes of Central London with a village-like feel, benefiting from outstanding local schools, open green spaces, picturesque riverside and an abundance of shops, restaurants and cafes. Transport links include Turnham Green Station, local bus routes and the A4/M4 for routes in and out of London.



The floor plan is not to scale and measurements and areas shown are approximate and therefore should be used for illustrative purposes only. The plan has been prepared in accordance with the RICS code of Measuring Practice and whilst we have confidence in the information produced, it must be not be relied on. If there is any aspect of particular importance, you should carry out or commission your own inspection of the property. Copyright of FeaturePRO.

- Redeveloped and extended to an exacting standard
- Master bedroom with dressing room and ensuite
- Kitchen/breakfast room
- Sauna
- Stunning basement conversion
- Double reception room
- Cinema
- Landscaped garden

SITUATION



5-7 Turnham Green Terrace, Chiswick, London, W4 1RG

Tel 020 8747 8800

E-mail sales@whitmanandco.com

Website www.whitmanandco.com