



Duke Road, London, W4 2BA

£1,100,000

WHITMAN & CO.

SALES · LETTINGS · COMMERCIAL

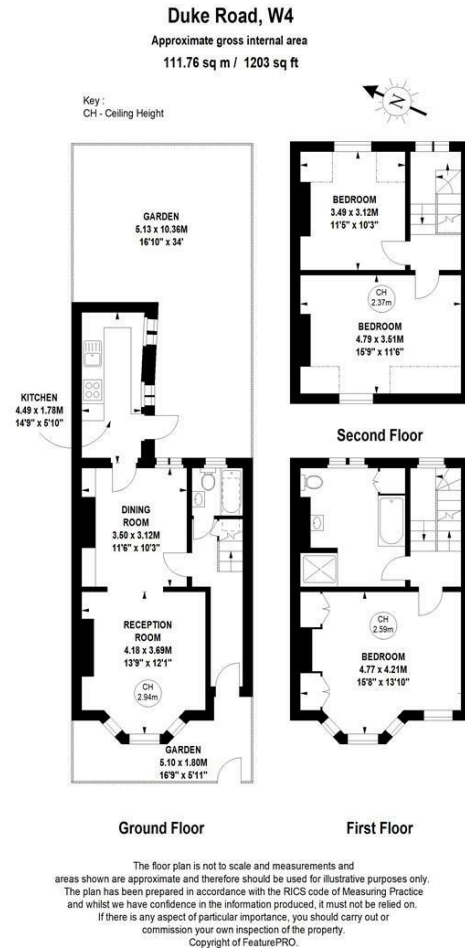
- Period family house
- 34' Private garden
- Situated close to all amenities

- Located within the popular Glebe Estate
- Sought after road

Tenure - Freehold
Local Authority - Hounslow
Council Tax - Band F

THE PROPERTY

An original three storey period family house presented in good order throughout and ideally located in the popular Glebe Estate area moments from Chiswick High Road. Three double bedrooms, Large bathroom, 25' Reception room, Fully fitted kitchen, Ground floor bathroom, Private 34' Landscaped garden. Located in this sought after residential road running South off Chiswick High Road offering close proximity to all amenities.



SITUATION



5-7 Turnham Green Terrace, Chiswick, London, W4 1RG

Tel 020 8747 8300

E-mail sales@whitmanandco.com

Website www.whitmanandco.com