



## Fraser Street, London, W4 2DA

A nicely presented extended three bedroomed Victorian end of terrace family home situated within Chiswick's very popular "Glebe Estate" area, just a short walk from the array of boutique shops and restaurants to be found along Chiswick's main high road. Accommodation provides: Three double bedrooms, family bathroom & further en-suite shower room, through reception room, extended spacious & bright kitchen/living Room, pleasant rear garden, cloakroom, utility room. Local transport links include Turnham Green Tube station, numerous local bus routes with convenient vehicular access via A4/M4 Central London, Heathrow & The West the property is available now and is offered unfurnished.

- Three double bedrooms
- Family bathroom & Further Shower room
- Extended Kitchen/Living Room
- Utility Room
- Cloakroom
- Private rear garden
- Resident CPZ parking
- Unfurnished
- Hounslow Council Tax Band F

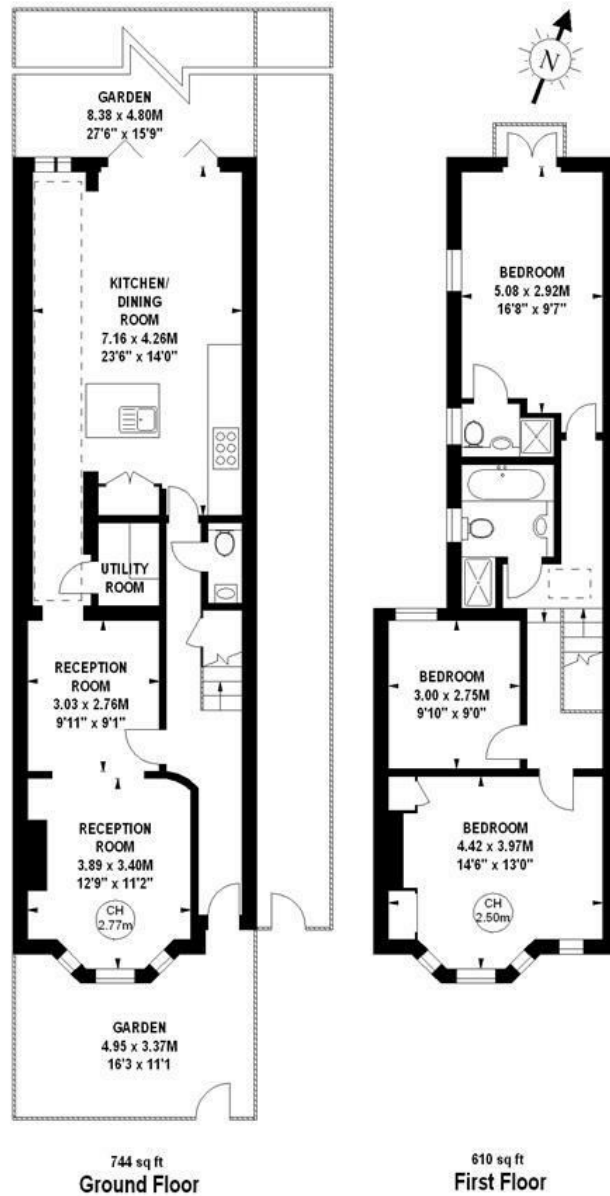
**£669 Per Week**

## Fraser Street, W4

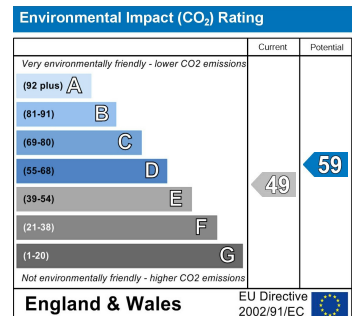
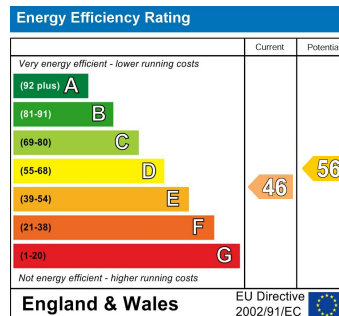
Approximate gross internal area

125.79 sq m / 1354 sq ft

Key :  
CH - Ceiling Height



The floor plan is not to scale and measurements and areas shown are approximate and therefore should be used for illustrative purposes only. The plan has been prepared in accordance with the RICS code of Measuring Practice and whilst we have confidence in the information produced, it must not be relied on. If there is any aspect of particular importance, you should carry out or commission your own inspection of the property.  
Copyright of FeaturePRO.



5-7 Turnham Green Terrace, Chiswick, London, W4 1RG

Tel 020 8747 3800

E-mail [lettings@whitmanandco.com](mailto:lettings@whitmanandco.com)

Website [www.whitmanandco.com](http://www.whitmanandco.com)

[PrimeLocation.com](http://PrimeLocation.com)

[Zoopla.co.uk](http://Zoopla.co.uk)

[rightmove](http://rightmove)

[OnTheMarket.com](http://OnTheMarket.com)

MISREPRESENTATION ACT 1967

Whitman & Co. for themselves and for the vendors give notice that these particulars do not constitute any part of, an offer of contract. All statements contained in these particulars are made without responsibility on the part of Whitman & Co. or the vendor. None of the statements contained in these particulars is to be relied upon as statements or representations of facts. Any intending purchaser must satisfy himself by inspection or otherwise as to the correctness of each of the statements contained in these particulars. The vendor does not make or give, and neither Whitman & Co. or any person in their employment has any authority to make or give, any representation or warranty whatever in relation to the property.