

SW19



Gilbert Road
Wimbledon

£899,950

- Four bedrooms
- South facing garden
- Full width extension
- Great location
- Neptune kitchen



SW19 Estate Agents Ltd.

Wimbledon Town 83b Hartfield Crescent London SW19 3RZ

South Wimbledon 119 Merton Road London SW19 1ED

Colliers Wood 44 High Street London SW19 2AB

020 8544 2828

info@SW19.com

SW19.com

SW19 Estate Agents Ltd. Is registered in England & Wales No. 05508737 Registered Office: 83b Hartfield Crescent London SW19 3RZ

A beautifully presented four bedroom house located in this very popular area of Wimbledon. The property has been fully extended at the rear and the loft and consists of a large reception room complete with energy-efficient underfloor heating throughout, downstairs WC and a new Neptune bespoke fully fitted kitchen opening onto the landscaped rear garden. Upstairs set over two floors offers four bedrooms, a family bathroom with roll top bath and shower. The main bedroom features its own shower room and boasts a Juliet balcony overlooking the South facing rear garden.



SW19 Estate Agents Ltd.

Wimbledon Town 83b Hartfield Crescent London SW19 3RZ

South Wimbledon 119 Merton Road London SW19 1ED

Colliers Wood 44 High Street London SW19 2AB

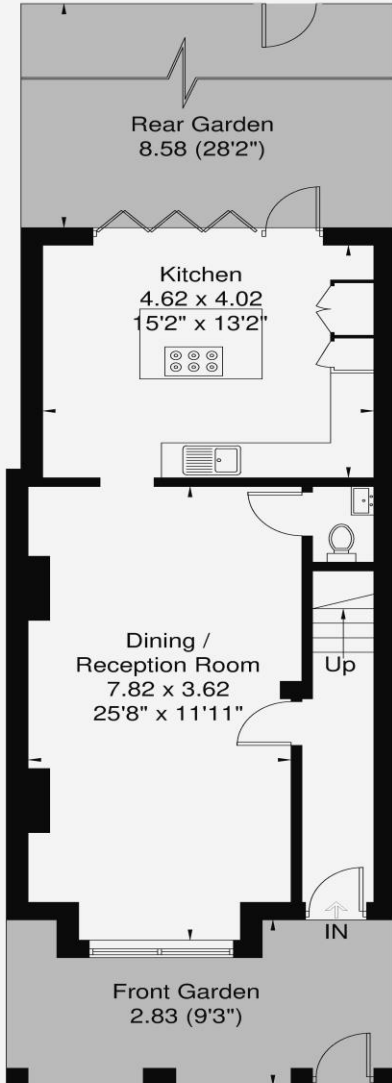
020 8544 2828

info@SW19.com

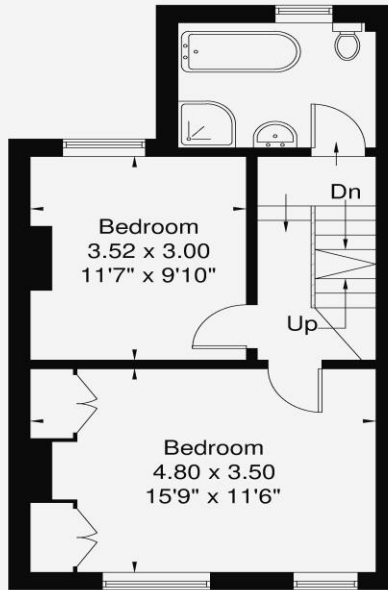
SW19.com

Gilbert Road SW19

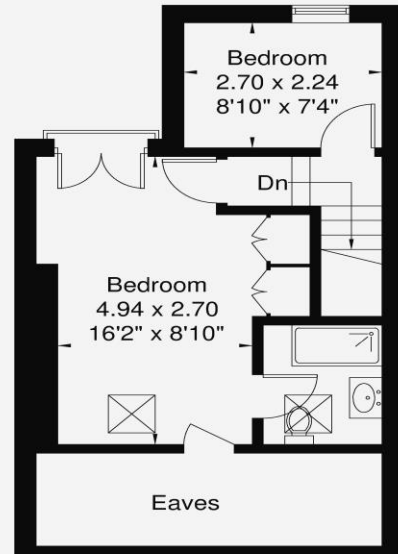
Approximate Gross Internal Area = 130.2 sq m / 1398 sq ft
(Excluding Eaves)



Ground Floor
54.8 sq m / 590 sq ft



First Floor
40.6 sq m / 437 sq ft



Second Floor
34.6 sq m / 372 sq ft
(Excluding Eaves)

www.epc.uk.com info@epc.uk.com

Not to scale, for guidance only and must not be relied upon as a statement of fact. All measurements and areas are approximate only and have been prepared in accordance with the current edition of RICS code of Measuring Practice.

SW19 Estate Agents Ltd.

Wimbledon Town 83b Hartfield Crescent London SW19 3RZ

South Wimbledon 119 Merton Road London SW19 1ED

Colliers Wood 44 High Street London SW19 2AB

020 8544 2828

info@SW19.com

SW19.com