

# the mission

An exciting mix of 26 luxury new build and loft-style apartments sensitively redeveloped around St. Mary of Eton Church in Hackney Wick, E9 5JA.

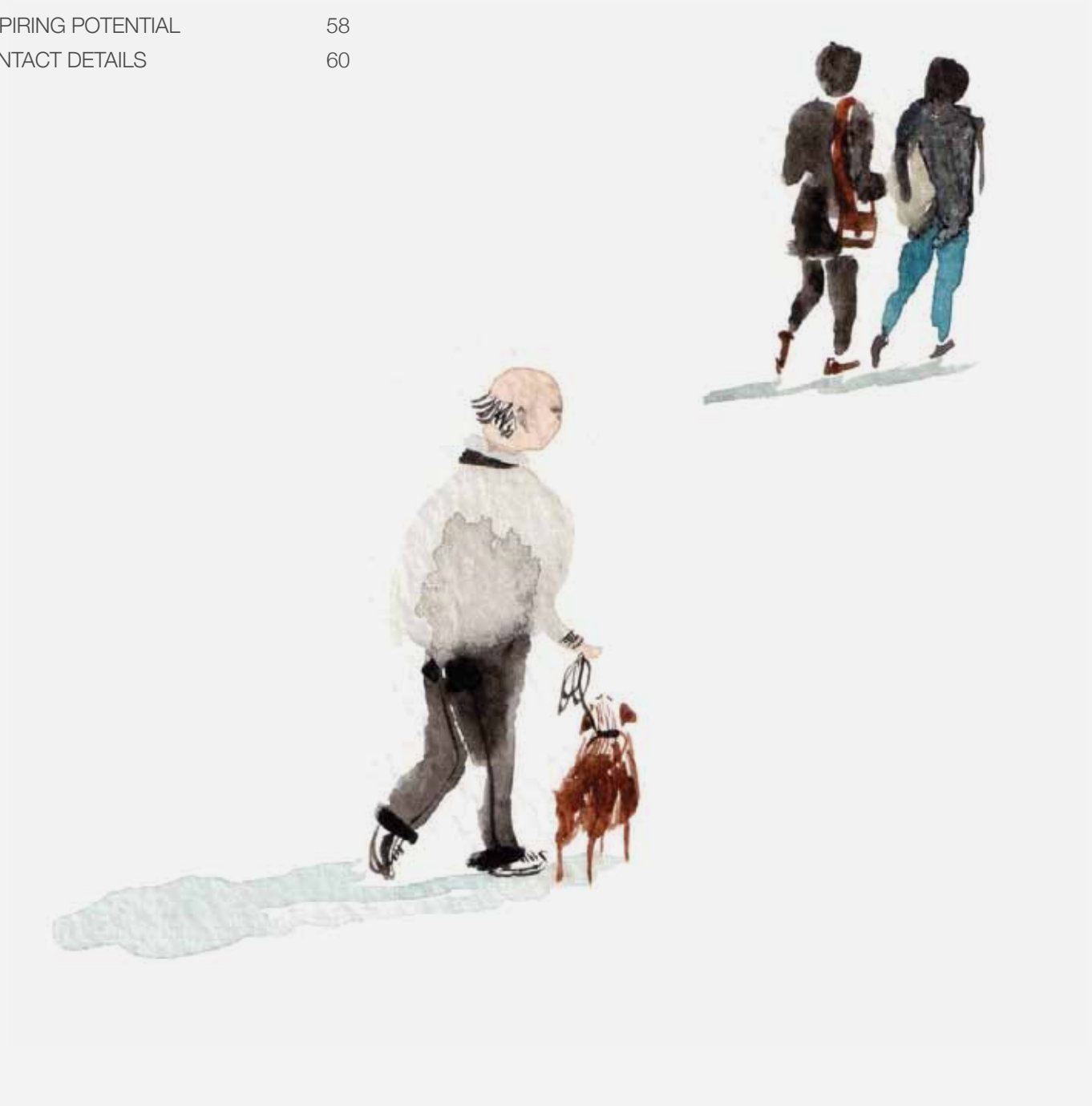
—

**Draw Inspiration.**

[www.themissionE9.com](http://www.themissionE9.com)



INSPIRED BY A MISSION	04
WE LOVE HACKNEY WICK	07
INSPIRED BY LIFE	12
A SOURCE OF INSPIRATION	16
INSPIRING CONNECTIONS	20
INSPIRED INTERIORS	26
THE MISSION BUILDINGS	34
INSPIRING POTENTIAL	58
CONTACT DETAILS	60





# the mission





Inspired by a Mission.

IN 1880 ETON COLLEGE ESTABLISHED A MISSION TO CARRY OUT CHARITABLE WORK IN HACKNEY WICK. THE RESULT WAS THE NEW CHURCH AND PARISH OF ST. MARY OF ETON, WHICH BECAME THE HEART OF A DIVERSE AND VIBRANT LOCAL COMMUNITY.

Now, over a hundred years later, the parish has evolved into a highly desirable cultural hub with the church still at its centre. The Mission has taken on a vibrant new shape –

in the form of a sensitively developed scheme of 26 luxury new-build and loft-style apartments located around St Mary’s Church on Eastway.

The Mission, Hackney Wick is a unique opportunity to own a home in one of London’s most exciting and distinctive areas – drawing inspiration both from the energy of London’s past and the prosperity of the future.



# We Love Hackney Wick\*

\*WICK IS AN OLD ENGLISH WORD  
MEANING 'NEIGHBOURHOOD' –  
THAT SENSE OF COMMUNITY STILL  
THRIVES IN MODERN DAY  
HACKNEY WICK.

Like many of East London's most fashionable pockets, the area's industrial history has sculpted the landscape of the Wick, creating a community centred around converted warehouses, modern developments and narrowboats.

Many residents live and work in the area and in turn take pride in creating a home that embraces individuality, creativity and change – without compromising its history.







KING'S CROSS

ST. PANCRAS

HACKNEY EMPIRE

HACKNEY DOWNS

OLYMPIC PARK

STRATFORD

HACKNEY WICK

the mission

LIVERPOOL STREET

LONDON BRIDGE

VICTORIA

RIVER

CANARY WHARF

THAMES







Inspired by Life.

FORMER WAREHOUSES ARE NOW OPENING UP AS GALLERIES, BARS, RESTAURANTS, COFFEE SHOPS AND EXHIBITION SPACES. THE TRUMAN BREWERY, ESTABLISHED IN EAST LONDON, HAS JUST REOPENED ITS DOORS AFTER TWO DECADES OF CLOSURE MAKING HACKNEY WICK ITS NEW HOME.

Formans Smokehouse is both exhibition space and restaurant. By taking existing industries and evolving them for current day demands, it is an area that chooses to adapt rather than close, meaning it thrives both day and night.

The area is criss-crossed by hidden waterways, canals and surrounded by green space. Victoria Park to the west, Hackney Marsh to the north and the Queen Elizabeth Park to the east. The canal network acts as a pedestrian highway to the rest of London and further out to Lee Valley Park.









# A Source of Inspiration.

IN GREAT CITIES ALL OVER THE WORLD, THE MOST FASHIONABLE DISTRICTS HAVE BEEN PIONEERED BY ARTISTS LOOKING FOR INSPIRATION AND PRACTICAL WORKING SPACE. LONDON IS NO EXCEPTION – AND THE WICK IS THE LATEST COMMUNITY TO BENEFIT FROM AN INFLUX OF PEOPLE ON A CREATIVE MISSION.

The entire area is in transition, making it a natural focal point for art parties and experimental performances. ‘WAGs’ or Wick Art Galleries are springing up all over – among them Cherie-Marie Veiderveld and Simon Reuben White’s Elevator Gallery, housed in a former chocolate factory, the event-based Decima, and the Residence, run by Toronto-born Ingrid-Z.

Already, the avant-garde has begun to give way to more established reputations. Space Studios, first established by iconic British artist Bridget Riley 40 years ago, now leases three studios in Hackney Wick, with the express mission of improving the area.

Meanwhile the Hackney WickED Art Festival has grown from a small series of coordinated art events into one of London’s most vital arts festivals, taking place in late July and early August and embracing resident and pop-up galleries, artist’s talks and over 500 studios. Residents of the Wick are also ideally situated to take advantage of June’s East End Film Festival and January’s London Short Film Festival – taking people on a journey of discovery all over the East of the city.









Inspiring  
Connections.



THE WICK CONNECTS TO THE  
WHOLE OF LONDON

The London Overground offers easy access from Hackney Wick station to Stratford, North London, Kew Gardens and Richmond. The Overground connects with the London Underground at nearby Highbury and Islington.

Stratford International Station, across the Queen Elizabeth Olympic Park, connects with the financial centre of London Docklands as well as providing high speed services to stations in Kent and London Kings Cross, connecting from there to mainland Europe. Services to the East of England are available at Stratford Regional Station.

For walkers and cyclists, the Wick is the starting point for the Greenway – a tranquil stretch of reclaimed embankment that forms part of the 78 mile Capital Ring circular walking route, connecting some of London’s most glorious scenery from Wimbledon Park to Brent Reservoir and the Thames Barrier.

The Wick is a hub for bus passengers too, connecting all over London.

And if you’re one of life’s individualists, you might like to know that the Eton Mission itself is the spiritual home of the 59 Club – founded in Hackney by Father William Shergold in 1959 and now one of the world’s largest motorcycle clubs.

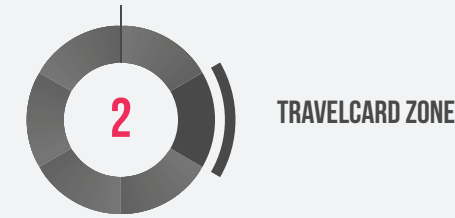
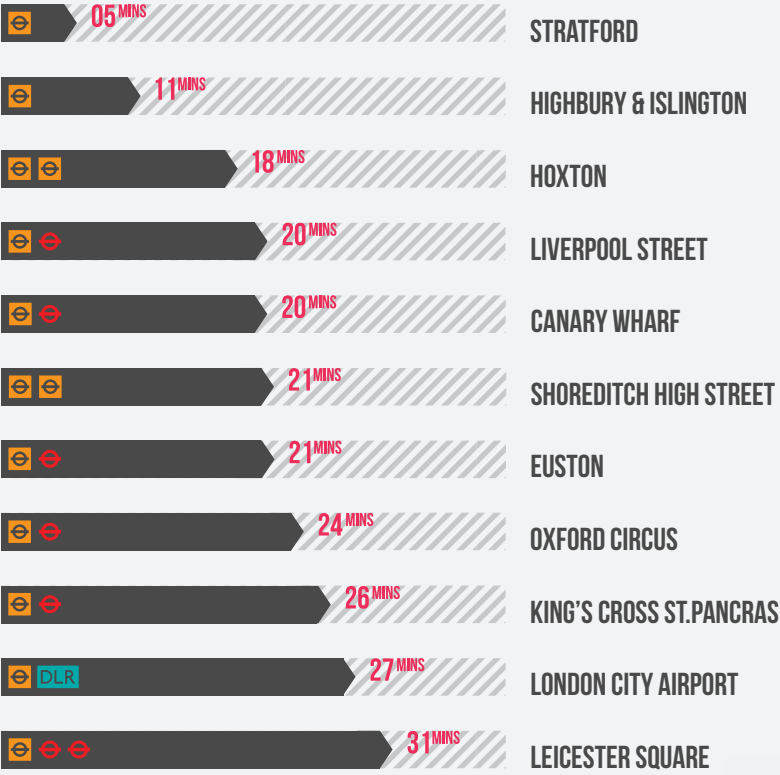
Journey times provided by [tfl.gov.uk](http://tfl.gov.uk)  
Walking times provided by [walkit.com](http://walkit.com)

- LONDON OVERGROUND
- LONDON UNDERGROUND

FROM THE MISSION



FROM HACKNEY WICK STATION













Inspired Interiors.



APARTMENT INTERIORS

- Kahrs Engineered Flooring Linea Oak tide
- Wide plank floorboards to hallway reception, kitchen and bedrooms of all units
- Walls and ceilings are painted in a white vinyl matt emulsion. All joinery is primed and decorated with an egg shell oil finish
- Internal doors in Vicaima white CPL with V Groove with modern brushed stainless steel handles
- Front security fire resistant door continuous pressure laminate V groove

KITCHENS

- Soft close doors and drawers to handless kitchen units
- Built in stainless steel Bosch appliances comprising electric oven, microwave & cooker hood (extractor) and electric ceramic hob
- Indesit fully integrated fridge-freezer, dishwasher & washer dryer
- Franke 1 & ½ bowl sink

BEDROOMS

- Master Bedrooms in all apartments have built in wardrobes other than where specified

BATHROOMS & SHOWER-ROOMS

- Wall mounted hand basin with vanity unit and chrome finish mixer tap
- Mirror cabinet with shaver socket
- White wall hung WC with chrome fittings/ soft closing seat
- Steel bath including feet to bathrooms
- 1000 x 800 mm square shower enclosure with sliding brushed steel frame and handle
- Concealed horizontal thermostatic shower and bath chrome mixers with round rain shower head
- Chrome thermostatically controlled towel rail

- Neutral contemporary tiling to all wall and floors

- Bath screen 1400mm x 800mm

SECURITY

- All apartments have video entry phones
- Fully integrated smoke detection & fire alarm system

HEATING & LIGHTING

- Each apartment has under floor heating with individual zoned thermostats
- Recessed contemporary white finish down lighters throughout
- Generous supply of power points, telephone points TV/FM & sky plus television points

CODE FOR SUSTAINABLE HOMES

- Green Roof
- Surface Water attenuation
- Low energy rated appliances
- Low energy lighting
- Low water using appliances
- Highly insulated
- Achieving level 3 for the code of sustainable homes

COMMUNAL AREAS

- Hall stair and landing carpet with underlay and gripper to perimeter
- Satin chrome finish ironmongery
- Stainless steel handrail with glass balustrading

BUILDING STANDARDS

- All elements of the development comply with building & fire regulations and relevant British standards

WARRANTY

- All apartments are covered by a 10 year Premier Guarantee warranty against structural defects in construction

LEASE

- 125-year lease









Indicative interior of another Thomsett development



View of the Tower Apartment





VERGERS  
Apartments N° 1-8

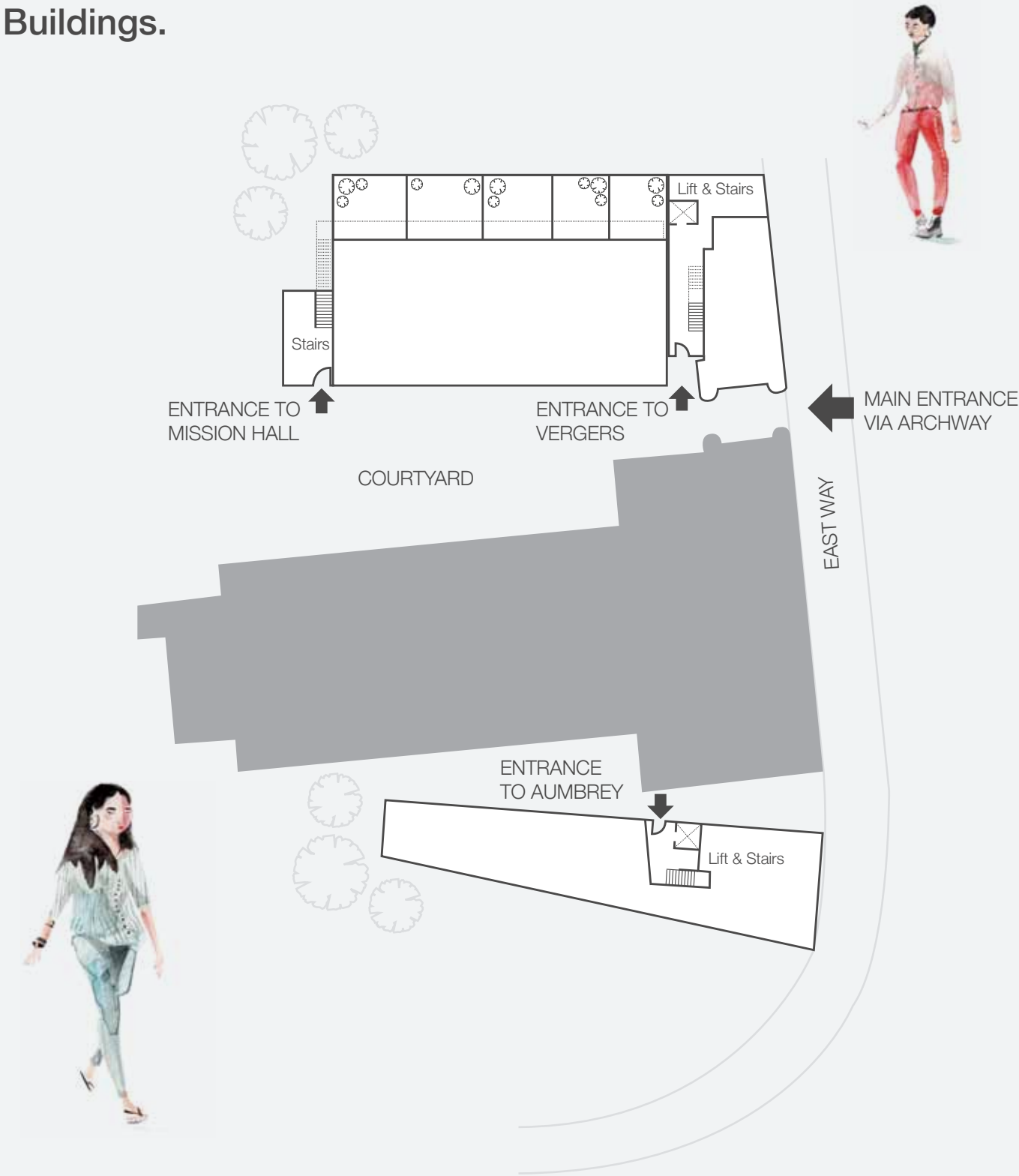
MISSION HALL  
Apartments N° 1-10

THE TOWER

AUMBREY  
Apartments N° 1-8



# The Mission Buildings.



## MISSION HALL

The Grade II Mission Hall is being sensitively refurbished to contain 10 homes, 5 ground floor with their own private gardens and 5 duplexes with double height spaces. Every effort has been made to retain the building's original features including double height windows and timber vaulted ceilings, creating apartments and duplexes full of character.

## AUMBREY

The six storey new build Aumbrey along with its twin, the Vergers, sit either side of the historic church creating a stunning fusion of new and old.

## VERGERS

The second of the six storey buildings as well as providing the development symmetry also has a glazed link to the restored Tower Apartment.

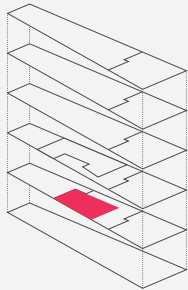
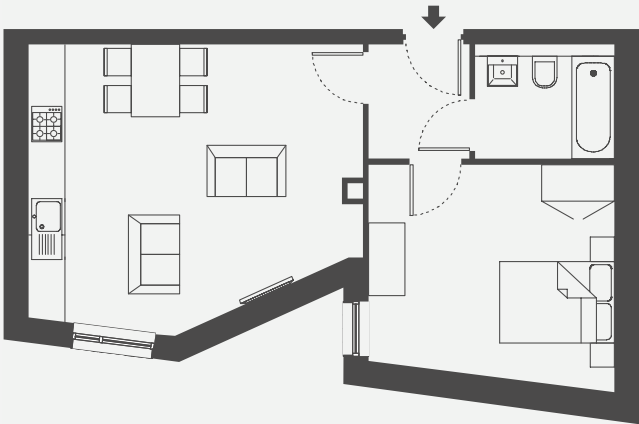
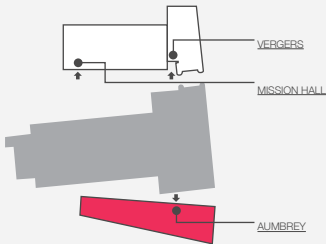
## THE TOWER

The dramatic tower has now been transformed into a stunning residence. Set over 5 floors, this unique home is resplendent with original features and has a roof terrace that provides stunning 360° views.





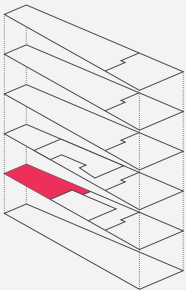
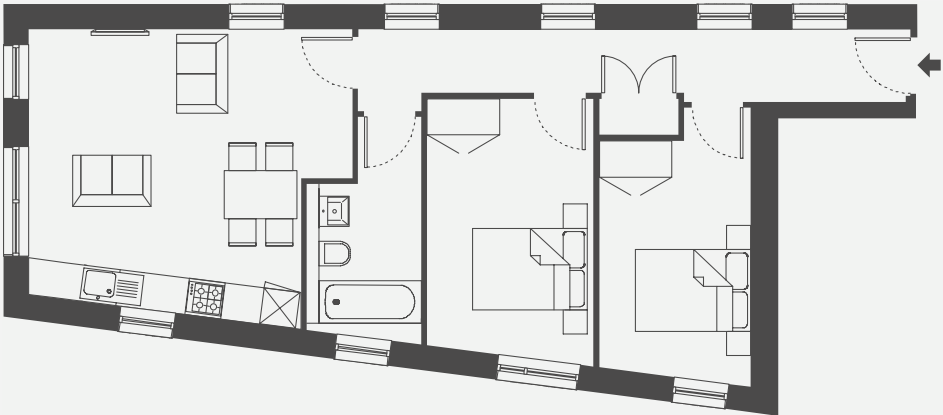
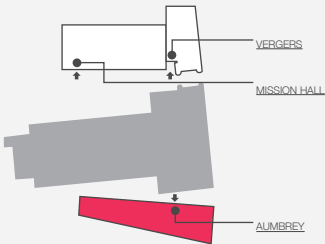
# AUMBREY



Floors: First



type two	Building: Aumbrey	Apartment number: 1	Gross Internal Area: 46m <sup>2</sup> (495ft <sup>2</sup> )
	Living/Kitchen	Bedroom One	
	5.5m x 4.5m 18'2" x 14'7"	4.1m x 3.5m 13'4" x 11'6"	

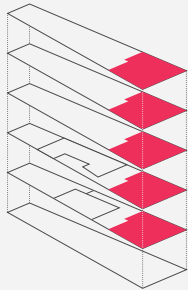
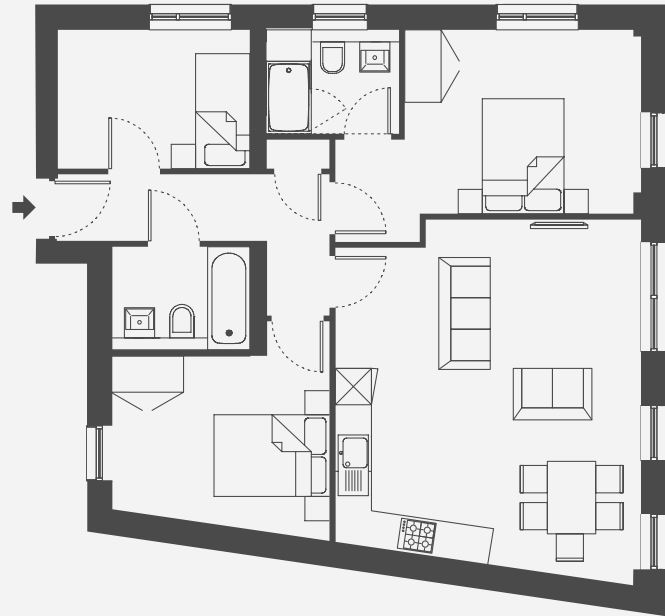
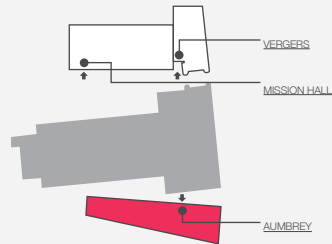


Floors: First



type three	Building: Aumbrey	Apartment number: 2	Gross Internal Area: 64m <sup>2</sup> (689ft <sup>2</sup> )
	Living/Kitchen	Bedroom One	Bedroom Two
	5.0m x 4.8m 16'4" x 15'7"	2.8m x 4.3m 9'0" x 13'11"	2.5m x 3.9m 8'2" x 12'10"

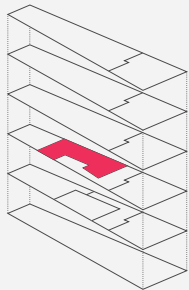
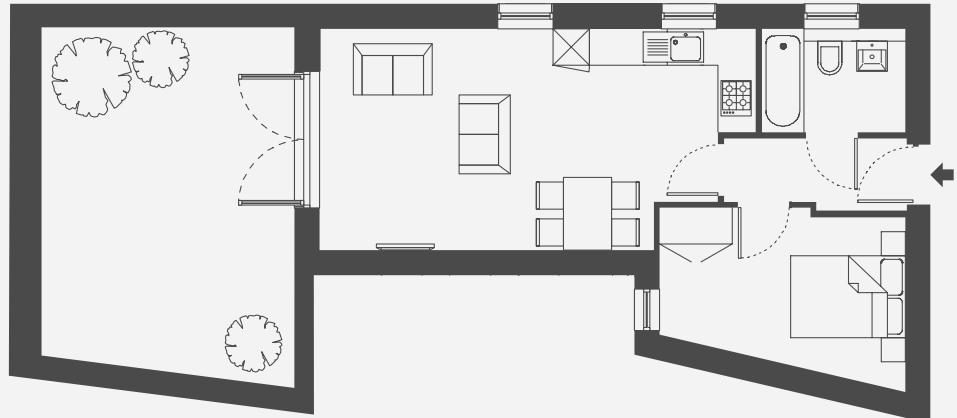
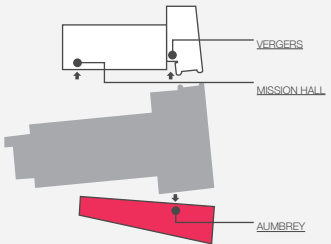




Floors: First - Fifth



type one	Building: Aumbrey		Apartment numbers: 3, 5, 6, 7 & 8		Gross Internal Area: 78m <sup>2</sup> (840 ft <sup>2</sup> )	
	Living/Kitchen	Bedroom One	Bedroom Two	Bedroom Three		
	5.1m x 5.7m 16'7" x 18'8"	3.9m x 3.0m 12'10" x 9'10"	3.6m x 2.8m 11'9" x 9'2"	3.2m x 2.3m 10'6" x 7'7"		



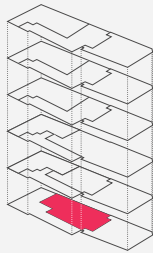
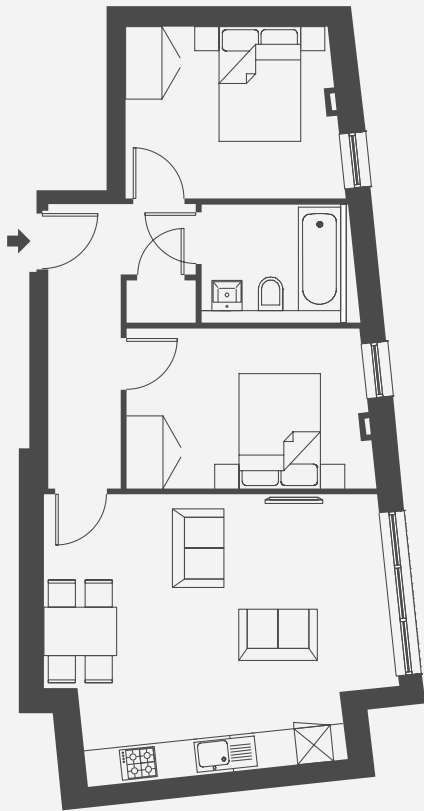
Floors: Second



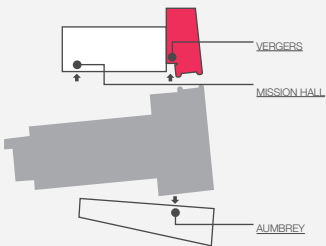
type four	Building: Aumbrey		Apartment number: 4		Gross Internal Area: 43m <sup>2</sup> (463ft <sup>2</sup> )	
	Living/Kitchen	Bedroom One	Terrace			
	7.2m x 3.6m 23'6" x 11'11"	4.1m x 2.6m 13'4" x 8'5"	4.1m x 5.4m 13'5" x 17'8"			



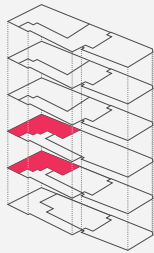
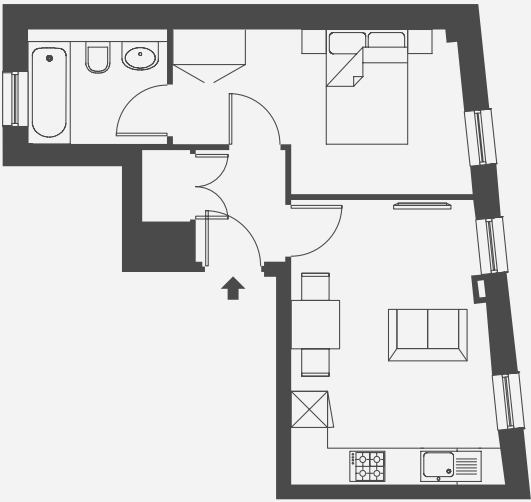
# VERGERS



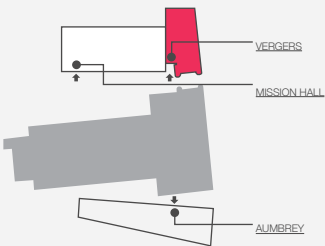
Floor: Ground



type five	Building: Vergers			Apartment number: 1			Gross Internal Area: 59m <sup>2</sup> (635ft <sup>2</sup> )		
	Living/Kitchen		Bedroom One		Bedroom Two				
	5.7m x 4.6m 18'7" x 15'1"		4.0m x 2.6m 13'1" x 8'8"		3.5m x 2.9m 11'5" x 9'4"				

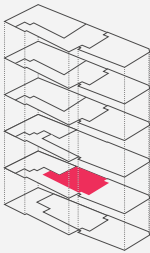
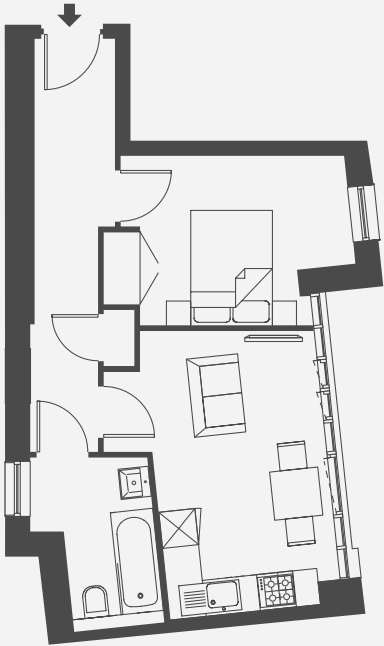
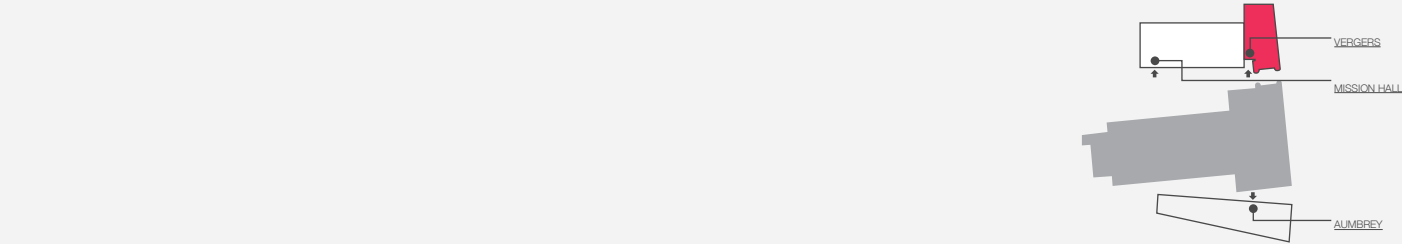


Floors: First & Second



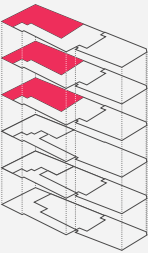
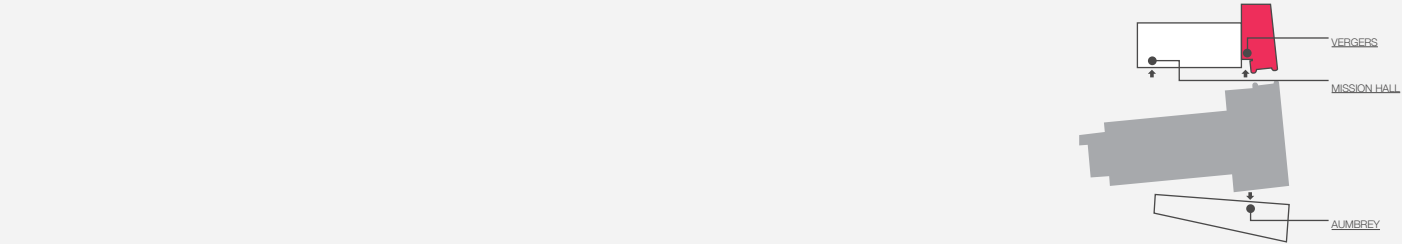
type six	Building: Vergers			Apartment numbers: 2 & 4			Gross Internal Area: 36m <sup>2</sup> (387ft <sup>2</sup> )		
	Living/Kitchen		Bedroom One						
	3.3m x 4.7m 10'8" x 15'5"		4.8m x 2.7m 15'8" x 8'11"						





Floors: First

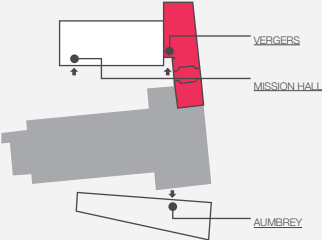
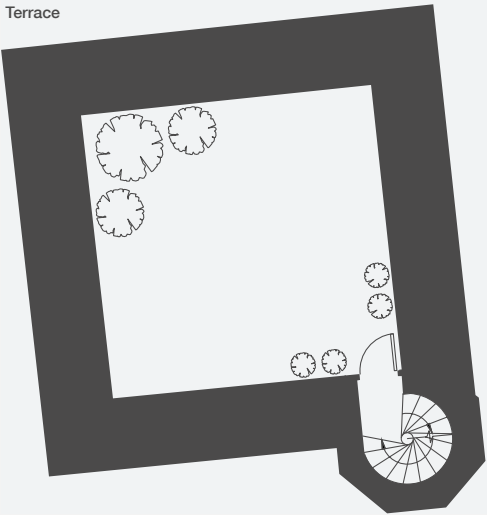
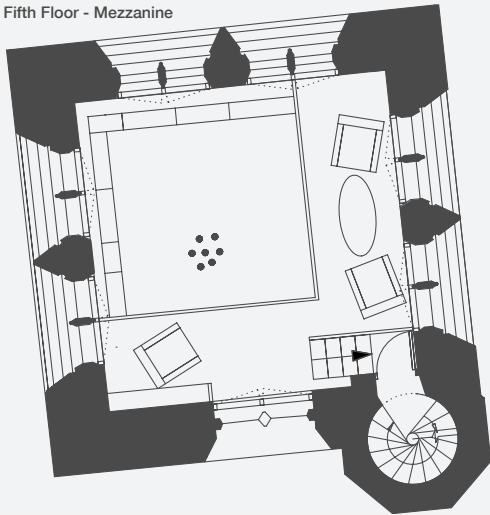
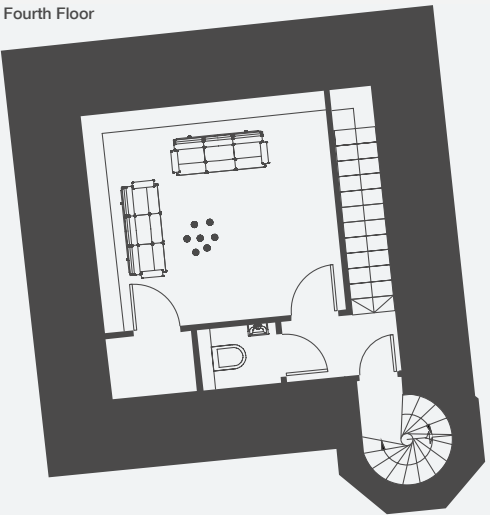
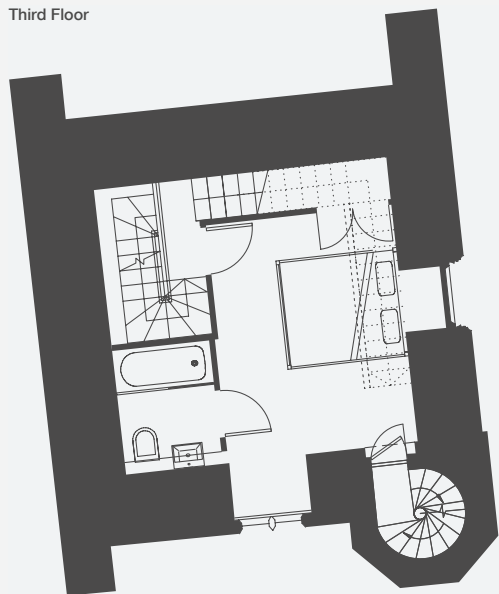
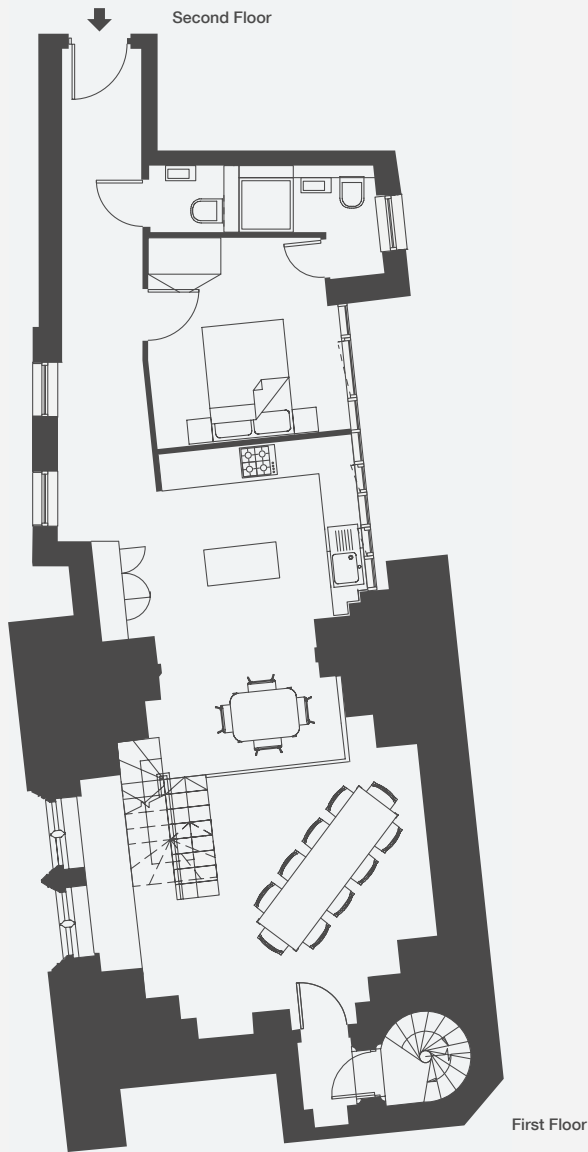
type seven	Building: Vergers	Apartment number: 3	Gross Internal Area: 39m <sup>2</sup> (420ft <sup>2</sup> )
	Living/Kitchen	Bedroom One	
	2.9m x 4.7m 9'5" x 15'3"	3.5m x 2.8m 11'7" x 9'2"	



Floors: Third, Fourth & Fifth

type eight	Building: Vergers	Apartment numbers: 6, 7 & 8	Gross Internal Area: 53m <sup>2</sup> (571ft <sup>2</sup> )
	Living/Kitchen	Bedroom One	Bedroom Two
	5.4m x 3.9m 17'8" x 12'9"	3.4m x 3.3m 11'0" x 10'9"	3.7m x 2.4m 12'0" x 7'10"





Floors: First, Second, Third, Fourth, Fifth & Terrace

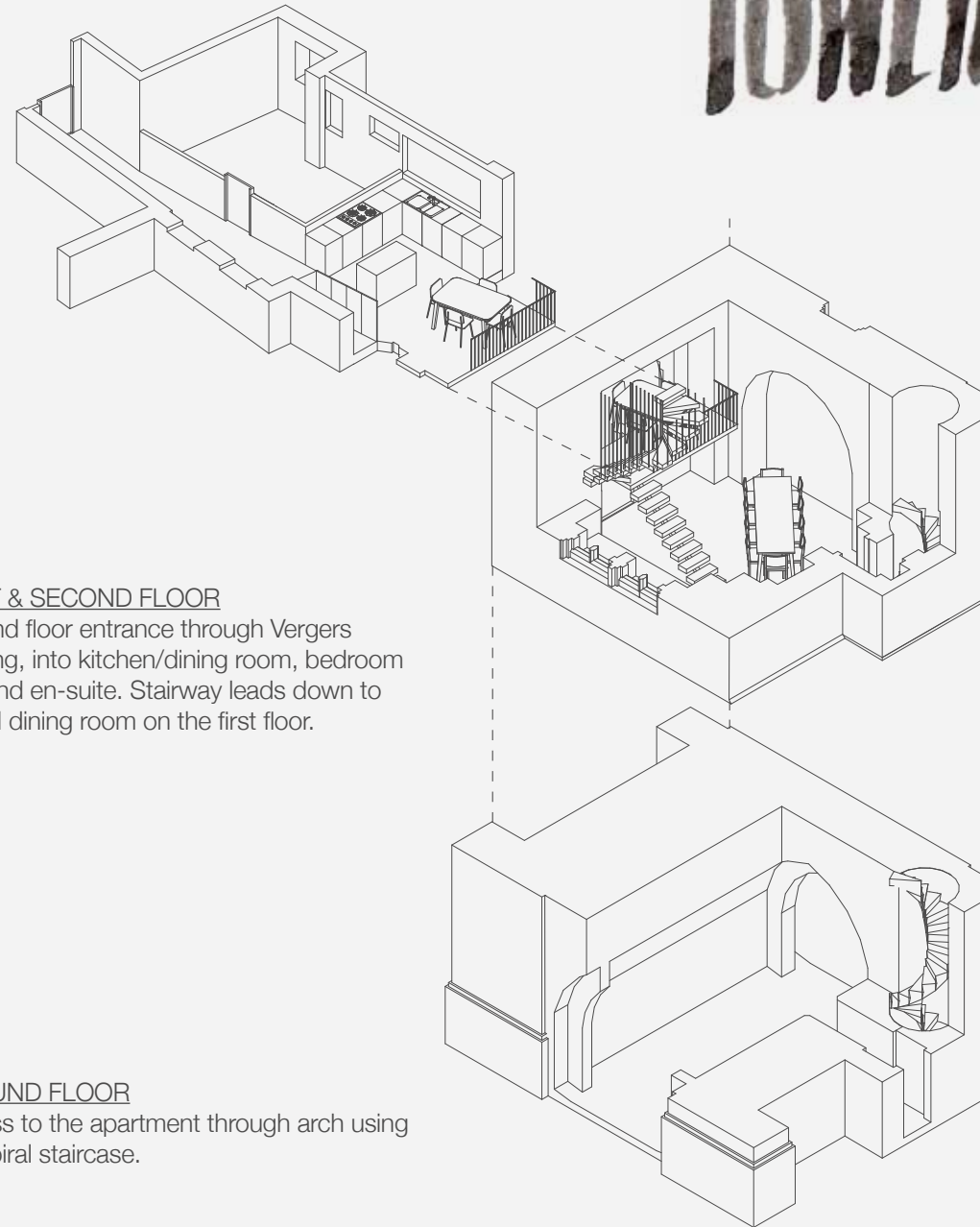
type nine	Building: Vergers - The Tower		Apartment number: 5	Gross Internal Area: 121m² (1297ft²)	
	Kitchen	Dining Room	Bedroom One	En-suite	
	4.6m x 5m 15'1" x 16'5"	6.1m x 5.4m 20'0" x 17'9"	3.3m x 3.5m 10'10" x 11'6"	2.4m x 1.9m 7'10" x 6'3"	

All measurements are approximate

	Bedroom Two	En-suite	Double height Reception	Gallery - Library	Roof Terrace
	6.5m x 5.1m 21'4" x 16'9"	1.8m x 2.2m 5'11" x 7'3"	4m x 4.4m 13'1" x 14'5"	5.3m x 5.5m 17'5" x 18'1"	5.7m x 5.7m 18'8" x 18'8"



# THE TOWER

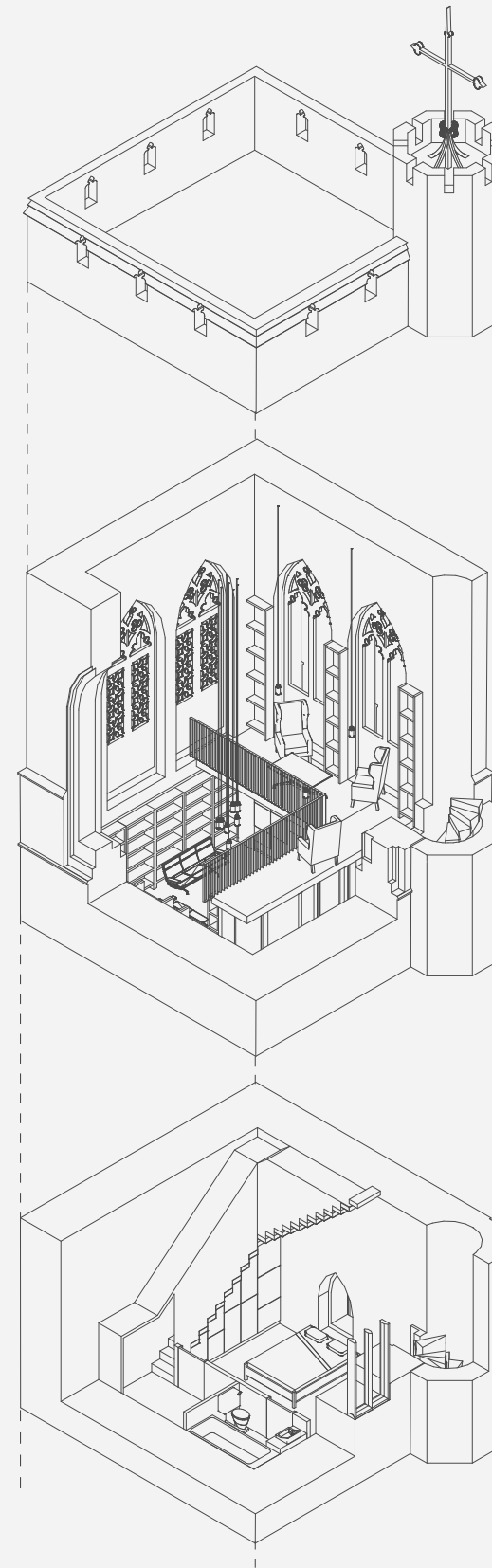


## FIRST & SECOND FLOOR

Second floor entrance through Vergers building, into kitchen/dining room, bedroom one and en-suite. Stairway leads down to formal dining room on the first floor.

## GROUND FLOOR

Access to the apartment through arch using the spiral staircase.



## TERRACE

## FOURTH & FIFTH FLOOR

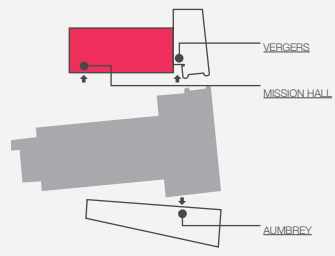
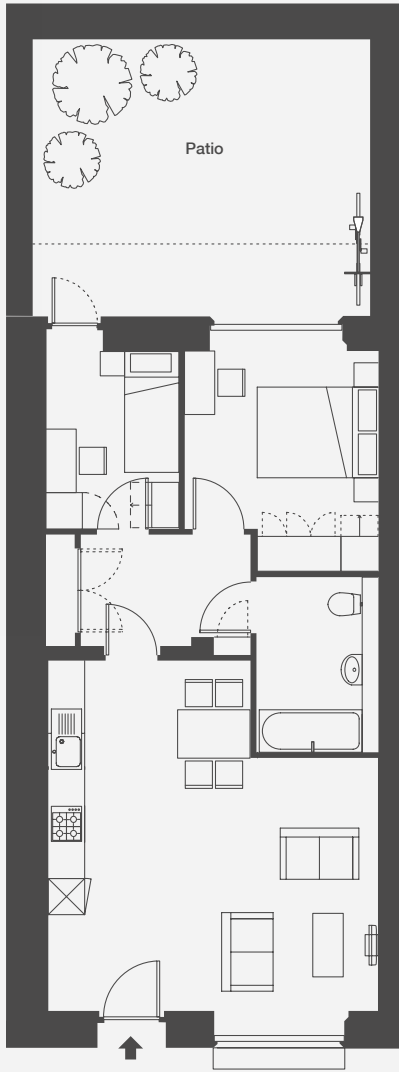
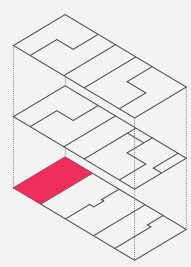
Double height reception and gallery/library mezzanine.

## THIRD FLOOR

Bedroom two, en-suit and fully en-closed staircase to fourth floor reception.

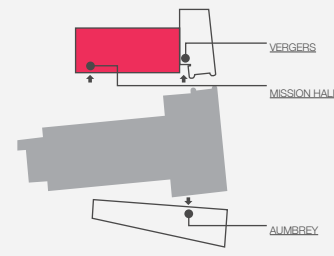
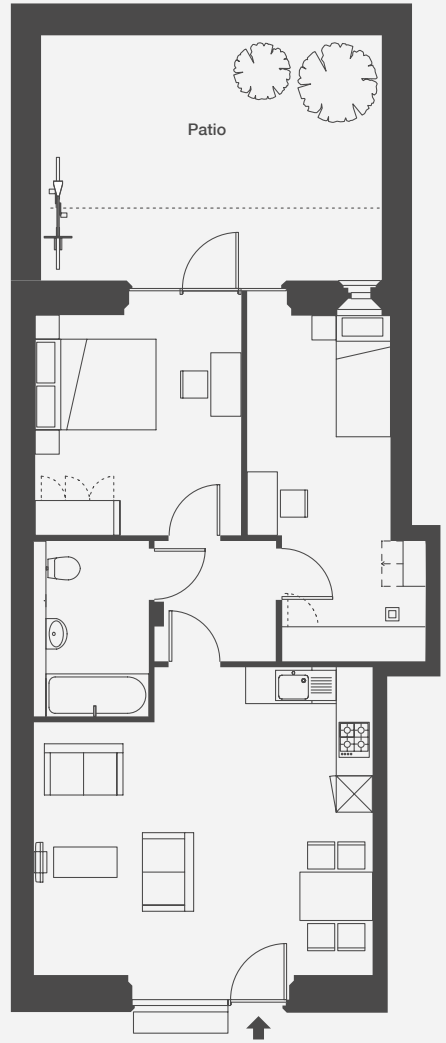
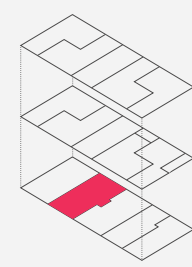


# THE MISSION HALL



Floors: Ground

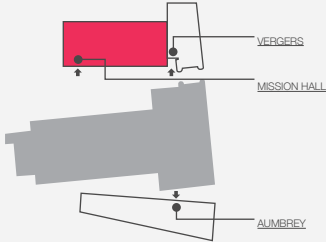
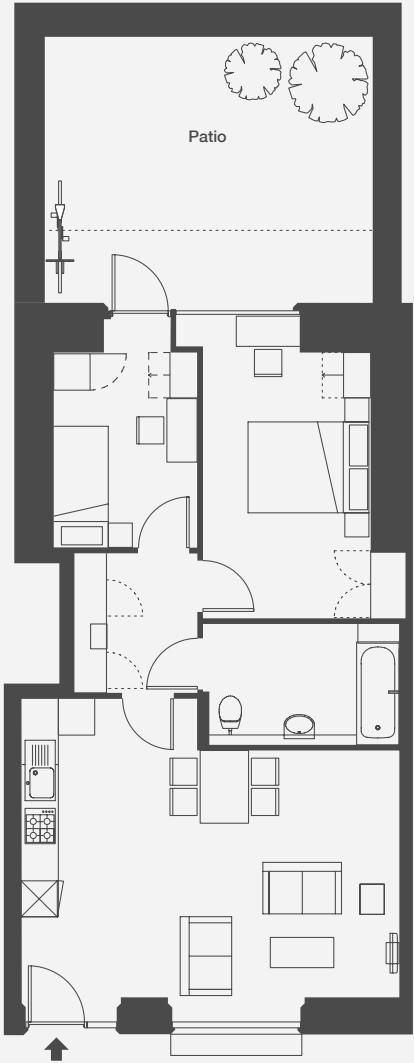
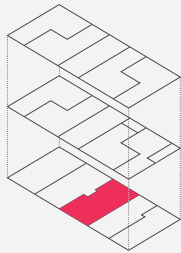
type ten	Building: Mission Hall	Apartment number: 1			Gross Internal Area: 61m <sup>2</sup> (657ft <sup>2</sup> )
	Living/Kitchen	Bedroom One	Bedroom Two	Private Patio	
	5.5m x 5.8m 17'11" x 19'0"	3.2m x 3.6m 10'6" x 11'11"	2.2m x 2.9m 7'2" x 9'7"	5.5m x 4.5m 18'0" x 14'9"	



Floors: Ground

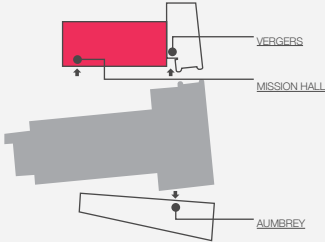
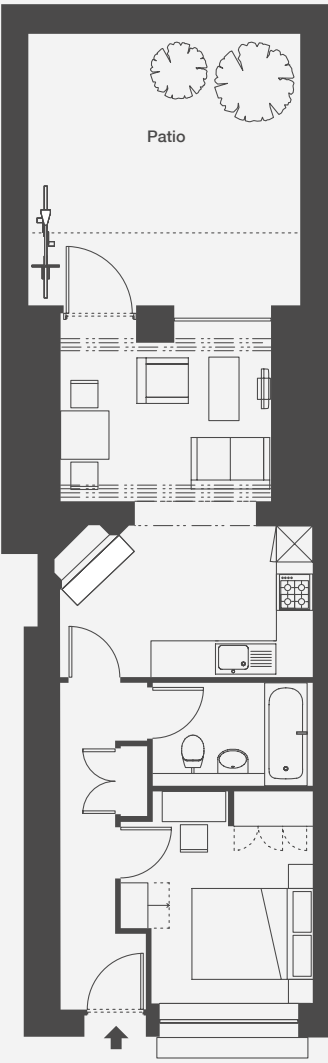
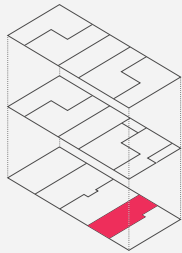
type eleven	Building: Mission Hall	Apartment number: 2			Gross Internal Area: 64m <sup>2</sup> (689ft <sup>2</sup> )
	Living/Kitchen	Bedroom One	Bedroom Two	Private Patio	
	5.6m x 5.1m 18'4" x 16'8"	3.4m x 3.6m 11'3" x 11'11"	2.5m x 5.7m 7'2" x 9'7"	5.6m x 4.5m 18'4" x 14'9"	





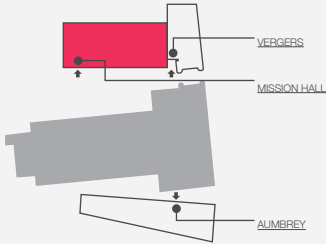
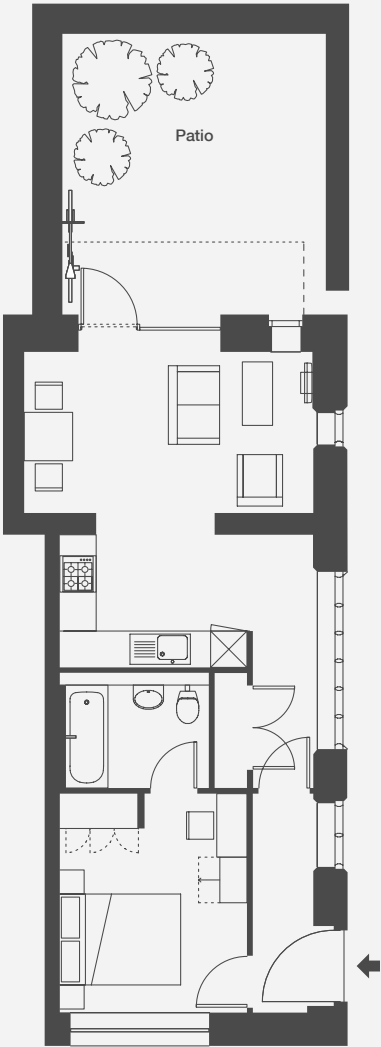
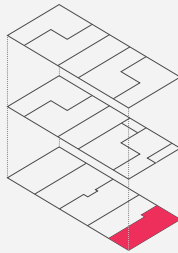
Floors: Ground

type twelve	Building: Mission Hall				Apartment number: 3				Gross Internal Area: 64m <sup>2</sup> (689ft <sup>2</sup> )			
	Living/Kitchen		Bedroom One		Bedroom Two		Private Patio					
	6.4m x 4.1m 21'0" x 13'5"		2.7m x 4.4m 9'0" x 14'5"		2.4m x 3.2m 7'9" x 10'7"		5.4m x 4.5m 17'8" x 14'9"					



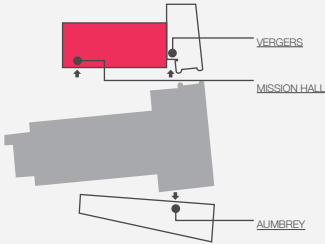
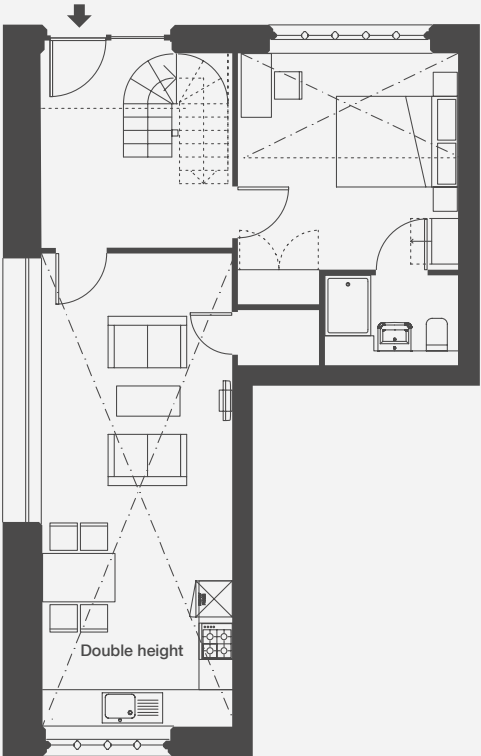
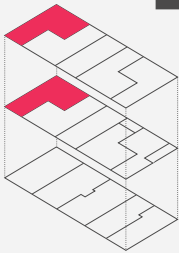
Floors: Ground

type thirteen	Building: Mission Hall				Apartment number: 4				Gross Internal Area: 42m <sup>2</sup> (452ft <sup>2</sup> )			
	Living		Kitchen/Dining		Bedroom One		Private Patio					
	3.5m x 2.6m 11'5" x 8'7"		4.2m x 2.5m 13'8" x 8'2"		2.6m x 3.5m 8'9" x 11'6"		4.5m x 4.5m 14'9" x 14'9"					



Floors: Ground

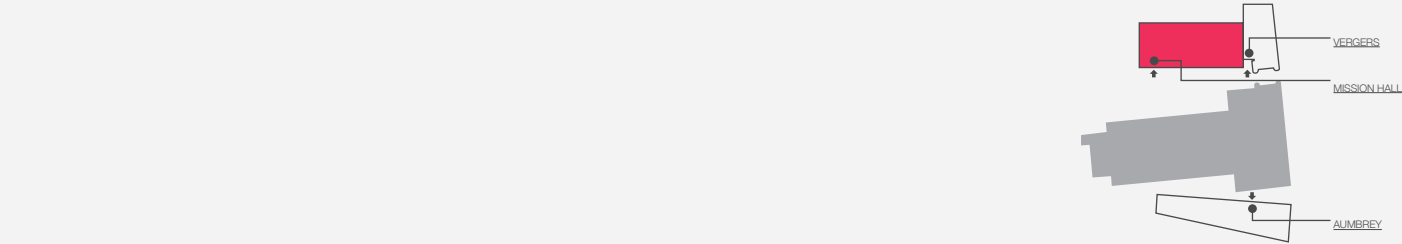
type fourteen	Building: Mission Hall	Apartment number: 5		Gross Internal Area: 48m <sup>2</sup> (517ft <sup>2</sup> )	
	Living	Kitchen/Dining	Bedroom One	Private Patio	
	4.8m x 2.7m 15'8" x 8'8"	4.2m x 2.2m 13'9" x 7'2"	3.1m x 3.6m 10'2" x 11'10"	4.3m x 4.5m 14'1" x 14'9"	



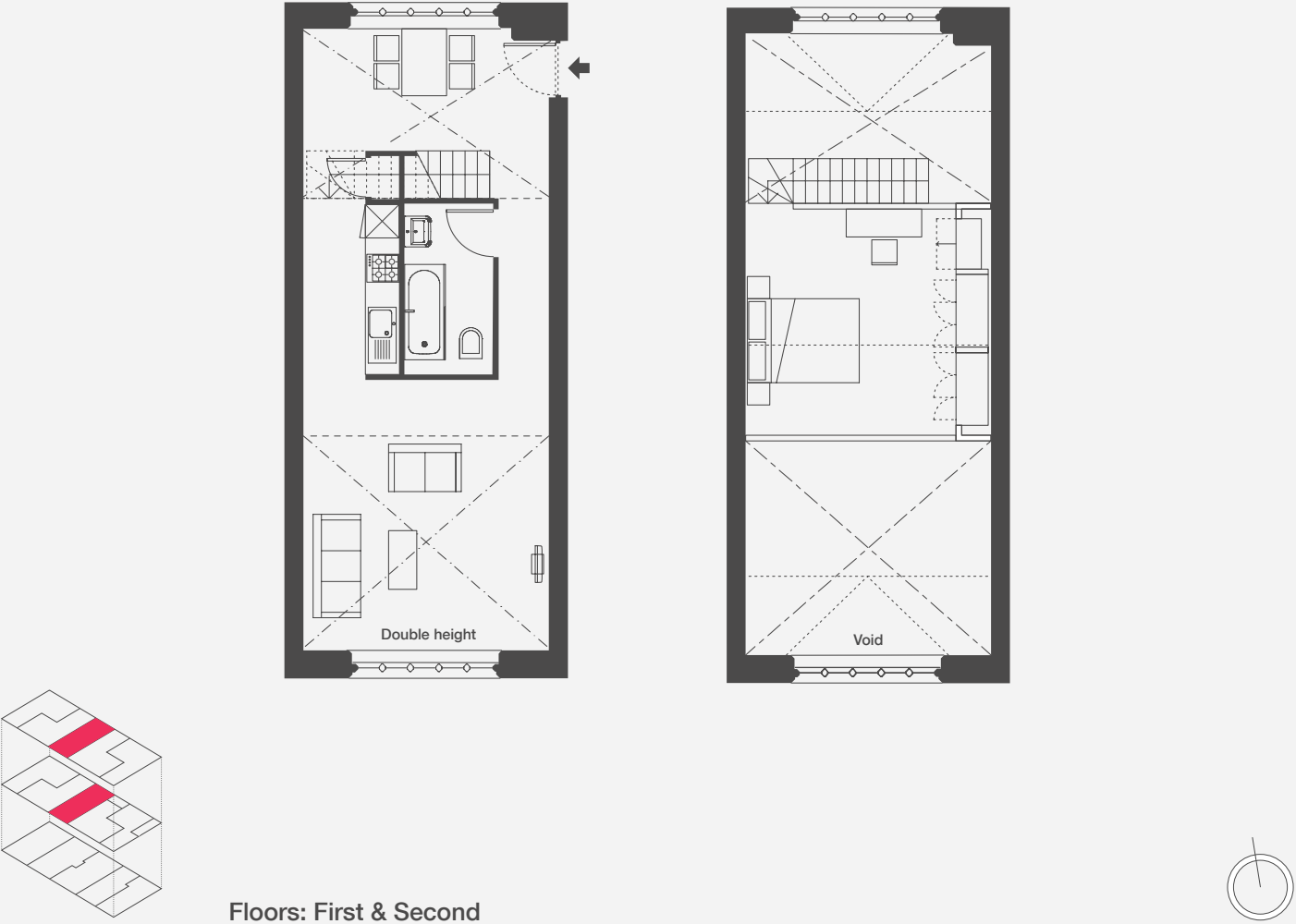
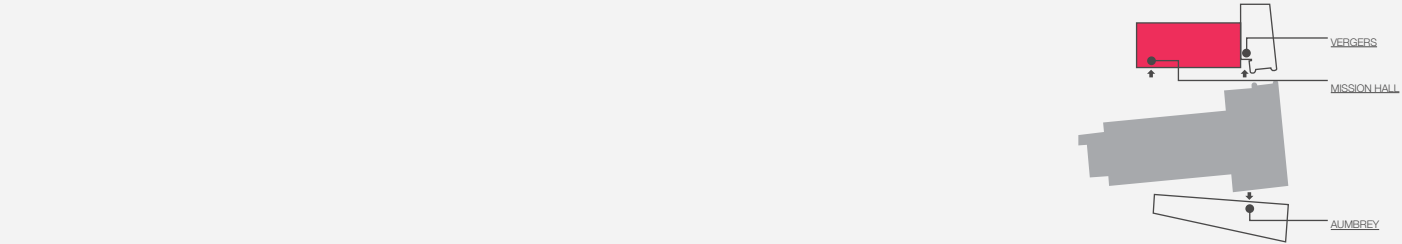
Floors: First & Second

type fifteen	Building: Mission Hall		Apartment number: 6		Gross Internal Area: 75m <sup>2</sup> (807ft <sup>2</sup> )
	Living/Kitchen	Bedroom One	Bedroom Two		
	3.2m x 7.8m 10'4" x 25'7"	3.6m x 3.6m 11'11" x 11'9"	3.6m x 3.3m 11'11" x 10'11"		

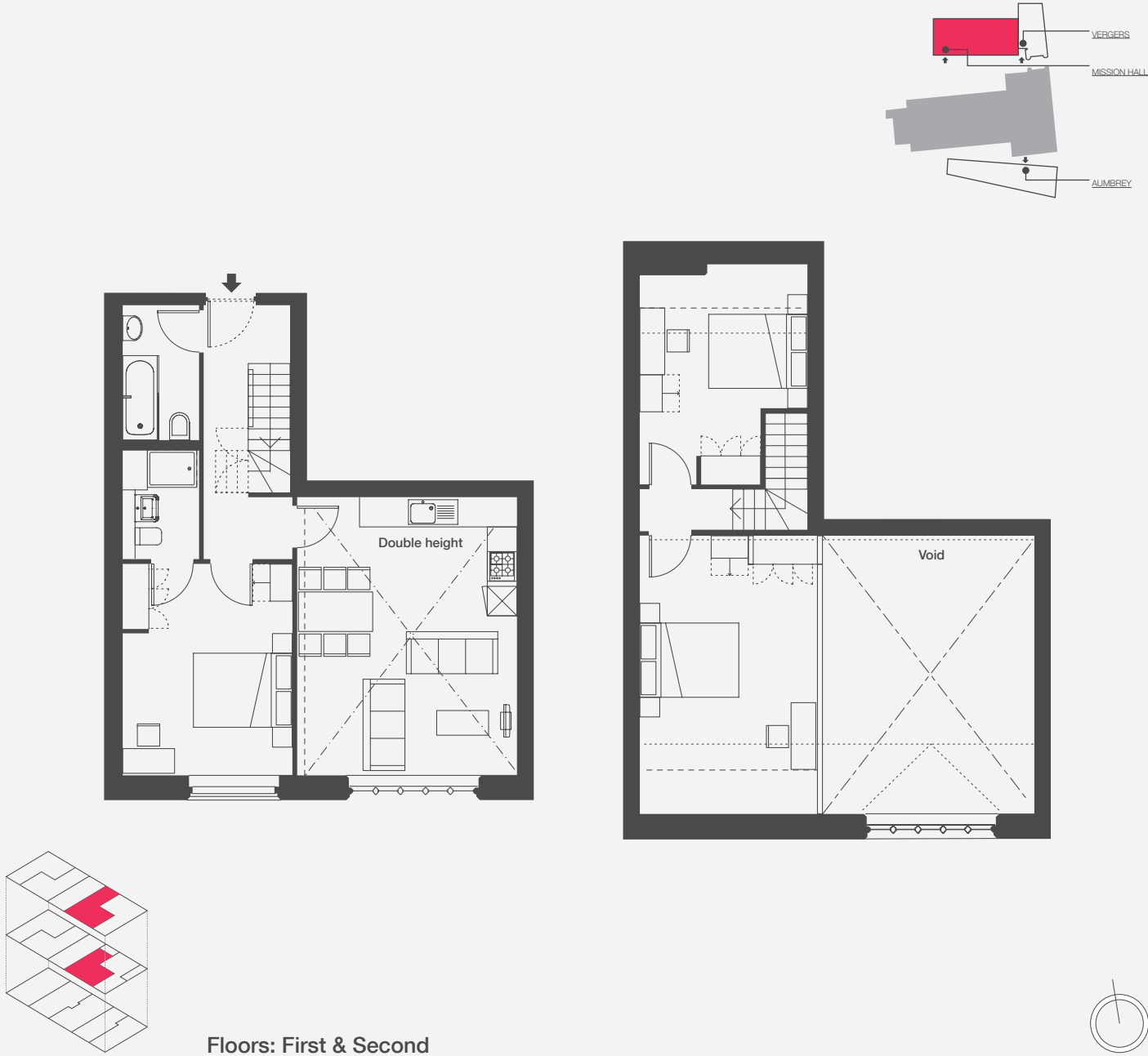




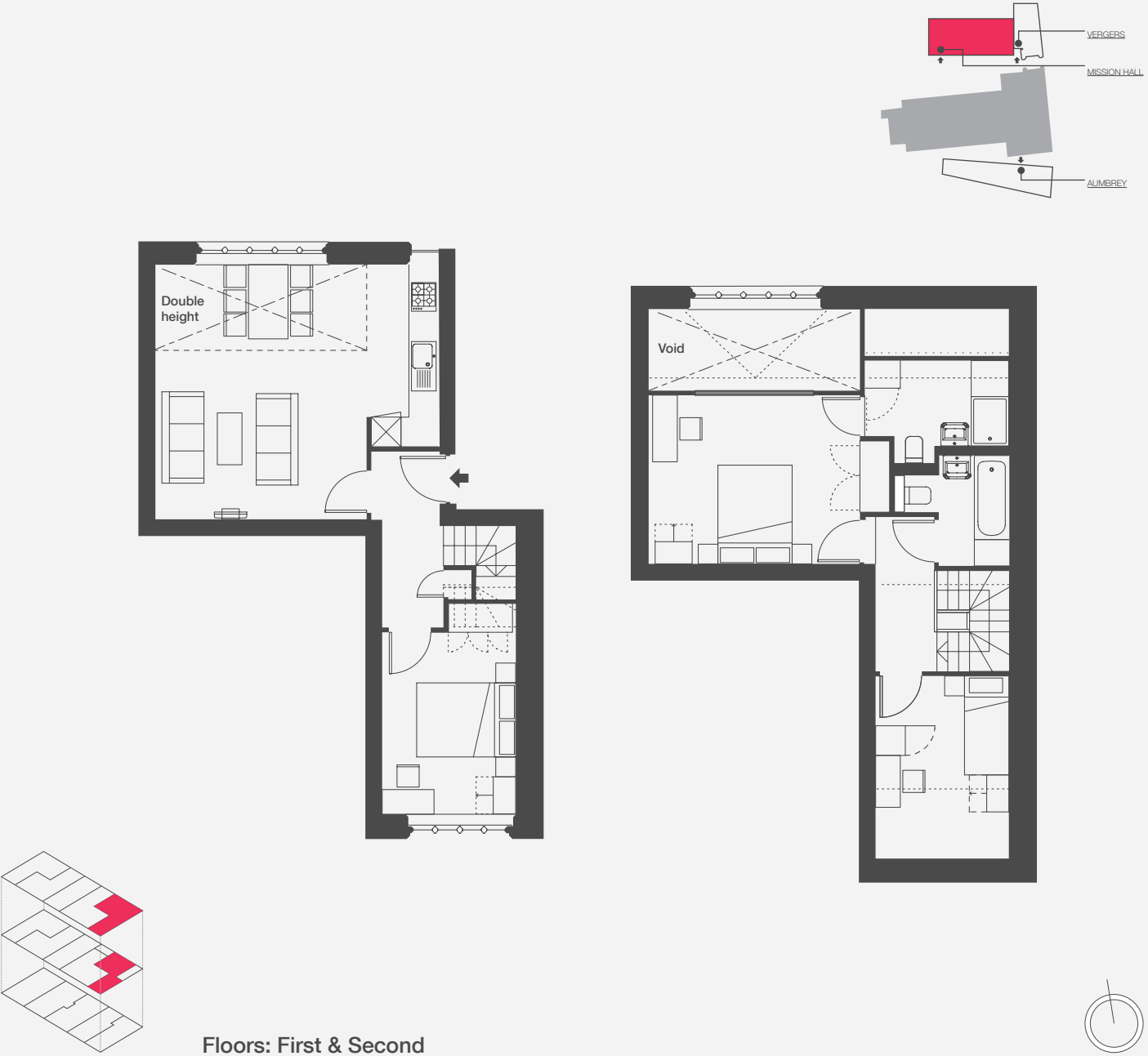
type sixteen	Building: Mission Hall		Apartment number: 7		Gross Internal Area: 101m <sup>2</sup> (1087ft <sup>2</sup> )	
	Living/Kitchen		Bedroom One	Bedroom Two	Bedroom Three	Bedroom Four
	4.4m x 5.6m 14'7" x 18'5"		3.0m x 4.5m 9'10" x 14'10"	3.8m x 3.7m 12'6" x 12'2"	3.8m x 2.6m 12'6" x 8'5"	1.9m x 3.6m 6'2" x 11'11"



type seventeen	Building: Mission Hall		Apartment number: 8		Gross Internal Area: 63m <sup>2</sup> (678ft <sup>2</sup> )	
	Living		Kitchen	Dining	Bedroom One	
	4.4m x 4.8m 14'5" x 15'10"		1.7m x 3.0m 5'7" x 9'12"	4.4m x 1.9m 14'5" x 6'3"	4.4m x 4.0m 14'5" x 13'3"	



type eighteen	Building: Mission Hall		Apartment number: 9		Gross Internal Area: 91m² (980ft²)	
	Living/Kitchen	Bedroom One	Bedroom Two	Bedroom Three		
	4.5m x 5.6m 14'7" x 18'5"	3.4m x 4.3m 11'3" x 14'1"	3.6m x 4.7m 11'9" x 15'6"	3.4m x 4.2m 11'1" x 13'11"		



Type nineteen	Building: Mission Hall		Apartment number: 10		Gross Internal Area: 86m <sup>2</sup> (926ft <sup>2</sup> )	
	Living/Kitchen	Bedroom One	Bedroom Two	Bedroom Three		
	5.8m x 5.2m 18'10" x 16'11"	4.3m x 3.4m 14'0" x 11'2"	2.7m x 3.7m 8'10" x 12'1"	2.7m x 3.7m 8'10" x 12'1"		



# Inspiring Potential.

THORNSETT GROUP IS A  
BESPOKE PROPERTY  
DEVELOPMENT COMPANY.

We pride ourselves on our refreshing and creative approach to providing homes where people want to live. Our homes are all built to the highest standards and incorporate the latest in contemporary design enhanced by traditional skills and experience. For the past 27 years, our reputation has been earned through providing quality and value for money that meets the expectations of today's sophisticated buyer.



# The Potential Realised.



## 1. SESAME APARTMENTS

Combining innovative design with a dream location in sought after Battersea, Sesame Apartments is a luxurious development of 80 apartments with views of the Thames. This really is the ultimate London residence.



## 2. ST PETER & ST PAUL APARTMENTS

69 one, two and three bedroom apartments, overlooking Battersea's York Gardens and a short walk from the buzz of St John's Hill and Northcote Road.



## 3. HANBURY HALL

Seven high specification apartments in this historic building located in the heart of Spitalfields and thirty seconds from fashionable Brick Lane.



Developer  
—

Thornsett Group plc  
34 Margery Street  
London  
WC1X 0JJ

Tel: + 44 (0) 20 7843 9500

[www.thornsettgroup.com](http://www.thornsettgroup.com)

Credits  
—

Property Marketing  
Ignite  
  
[www.lgnitetv.com](http://www.lgnitetv.com)

Watercolour Art  
Lucy Eldridge  
  
[www.lucyeldridge.com](http://www.lucyeldridge.com)

Tower 3D Drawings  
Gatti Routh Architects



the mission  
—

[www.themissionE9.com](http://www.themissionE9.com)

©

2014

Thornsett Group plc and its subsidiaries ("Thornsett") has taken all reasonable care in the preparation of the information given in this brochure. However, this information is subject to change and has been prepared solely for the purpose of providing general guidance. Therefore, Thornsett does not warrant the accuracy or completeness of this information. Particulars are given for illustration purposes only. Thornsett undertakes continuous product development and any information given relating to our products may vary from time to time. As a result, information on such products is provided for general guidance only and does not constitute any form of warranty or contract on our part. The information and particulars set out within this brochure do not constitute, nor constitute part of, a formal offer, invitation or contract (whether from Thornsett or any of its related subsidiaries or affiliates) to acquire the relevant property. For the reasons mentioned above, no information contained in this brochure is to be relied upon. In particular, all plans, perspectives, descriptions, dimensions and measurements are approximate and provided for guidance only. Intending purchasers or lessees must satisfy themselves by personal inspection, their own tests, enquiries, surveys or otherwise as to the correctness of such information. Such information is given without responsibility on the part of Thornsett. Neither our agents nor their employees have any authority to make or give any representations or warranties whatsoever in relation to this development or any property within it. This information is issued on the understanding that all negotiations are conducted through Thornsett and its agents.







THORNSETT GROUP

REALISING THE POTENTIAL

[www.thornsettgroup.com](http://www.thornsettgroup.com)

[www.themissionE9.com](http://www.themissionE9.com)