

Riverside Gardens

Hammersmith, London, W6





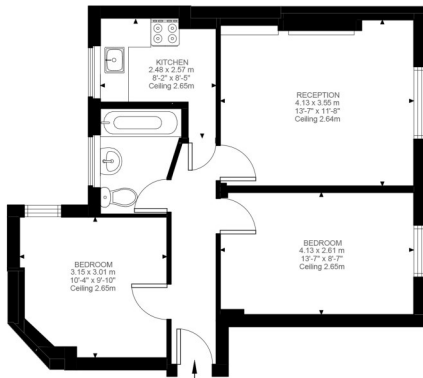
Riverside Gardens

Hammersmith, London, W6

Price Guide: £399,950

A well-presented two double bedroom purpose built apartment located within 7-8 minute walk of Hammersmith Broadway. The property boasts a well fitted kitchen, white bathroom suite, two generous double bedrooms, and spacious reception room.

Riverside Gardens is superbly positioned, just a stone's throw away from all the local high street shops along King Street, and a short walk to Riverside Towpath which offers a fantastic selection of pubs and restaurants. This is a much sought after purpose built block and an early viewing is recommended. Ideal for a first time buyer or as a buy to let investment. Offered with a long Lease.



First Floor
532 ft²

Riverside Gardens, W6
Approximate Gross Internal Area
49.43 SQ.M / 532 SQ.FT

KEY: CH = Ceiling Height
[Restricted Head Height]

Illustration for identification purposes only. Not to scale.
Floor Plan Drawn According To RICS Guidelines.

Well presented two double bedroom purpose built apartment | Ideal first time buy/investment

Superb location | Spacious reception room | Well fitted kitchen | White bathroom suite

Stones throw to King Street shopping | Short walk to River Thames towpath | Long Lease

Close to transport & numerous amenities | 532 Sq. Ft. (49.43 Sq. M.) Leasehold

Full Energy Performance Certificate available on

All viewings by appointment through our **Hammersmith Office**:

T: 020 7385 7000
E: hammersmith@lawsonrutter.com

192 Fulham Palace Road, London W6 9PA

In accordance with the Property Misdescription Act 1991, we wish to emphasise that the information given in these particulars is intended to help you decide whether you wish to view this property. Whilst every care is taken to ensure the accuracy of these particulars please note that all measurements are approximate and we are, for the accuracy of other information, reliant on what the seller has provided. We strongly recommend that you rely on your own inspections and those of your advisors to establish the details of any aspects which are of particular importance. Please note that we have not undertaken any survey of the property or the appliances within it and the buyer must rely on their own investigations prior to exchange of contracts.

