



The Terrace, Deptford

Offers In Excess Of £400,000 Leasehold

OLIVER *OJ* JAUQUES
EST.1986



The Terrace, Deptford

Enjoy a slice of Deptford's maritime history with this period conversion, dating from the 1780s, built to house the Naval Officers stationed at King George III's nearby naval dockyards. Benefitting from the large, divided-light sash windows and high ceilings that you would expect from a building of this age, this property has been lovingly cared for and sympathetically decorated to maximise its Georgian charm. Today the area is a bustling residential area with a unique riverside feel which is hard to replicate in other parts of London. Local amenities in the immediate vicinity include a Tesco Express, Pharmacy and the new cafes / bars in Marine Wharf and Greenland Place. Nearby transport links include the much loved Thames Clipper service from the Greenland Pier which is just a 9 minute riverside stroll away.

- Two Double Bedrooms
- Grade II Listed Georgian Conversion
- Period Features
- Top Floor Position
- Sympathetically Maintained
- Communal Gardens

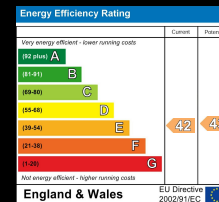
Oliver Jaques Surrey Quays
020 7231 5050

Email southeast@o-j.co.uk

229/231 Lower Road, Surrey Quays, London, SE16 2LW

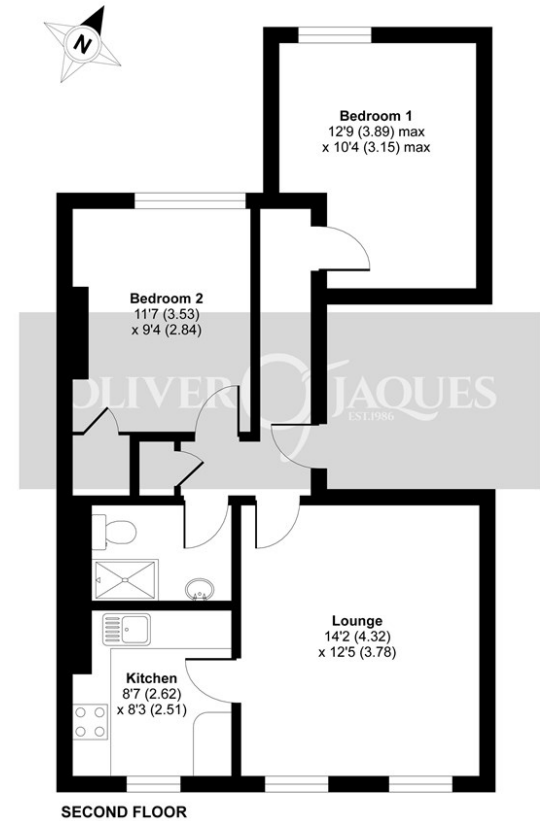
web www.o-j.co.uk

Every care has been taken with the preparation of this brochure but it is for general guidance only and complete accuracy cannot be guaranteed. If there is any point, which is of importance professional verification should be sought. This brochure does not constitute a contract or part of a contract. We are not qualified to verify tenure of property. Prospective purchasers should seek clarification from their solicitor or verify the tenure of this property for themselves by visiting www.gov.uk/government/organisations/land-registry. The mention of any appliances, fixtures or fittings does not imply they are in full working order. Photographs are reproduced for general information and it cannot be inferred that any item shown is included in the sale. All dimensions are approximate. Walking times are taken from Google Maps and measured from the centre of the postcode, which may differ from the individual property. We routinely refer clients to Chancery Mortgage Services Ltd. It is your decision whether you choose to deal with Chancery Mortgage Services Ltd. In making that decision, you should know that we receive an annual payment benefits from Chancery Mortgage



The Terrace, Longshore, London, SE8

Approximate Area = 621 sq ft / 57.7 sq m
For identification only - Not to scale



Floor plan produced in accordance with RICS Property Measurement Standards incorporating International Property Measurement Standards (IPMS2 Residential). © richcom 2021. Produced for Oliver Jaques. REF: 789794

Tenure: Leasehold
Ground Rent: £10 pa
- Fixed
Service Charge: £2,032 pa
Lease Expires: 2108
Shared Ownership: No
Council Tax Band: Lewisham London Borough Council (Band B)
£1,356.15 pa