



Camden Hill Road SE19  
£865,000

0208 702 9333  
[pedderproperty.com](https://www.pedderproperty.com)

**pedder**







# In general

- 1730 sq ft / 160.7 sq m
- Five bedrooms
- Central location
- Close to Paxton Primary School
- No onward chain
- South facing outside space
- Nearby rail links

# In detail

A spacious five bedroom, three bathroom house centrally located just off of the Crystal Palace Triangle and available for sale with no onward chain.

The accommodation totals 1730 sq ft / 160.7 sq m and is arranged over three levels, providing flexible spaces to meet modern day requirements.

Noteworthy features include a light and bright through lounge / diner which open to a 20ft kitchen with skylight, two bathrooms, an en suite shower room, five double bedrooms.

Externally there is a rear courtyard with a southerly aspect.

Camden Hill Road is highly sought after for those who want to be moments from the hustle and bustle of central Crystal Palace. Also, well placed for both CP and Gipsy Hill rail links, and the ever-popular Paxton Primary School.

A rarely available property that could offer an ideal next step for a young or growing family.

EPC: B



# Floorplan

## Camden Hill Road SE19

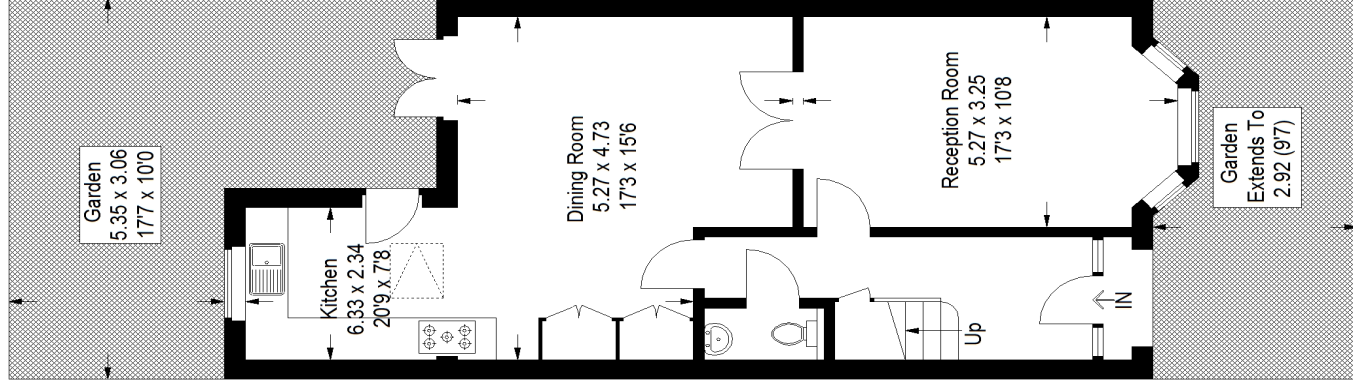
Approximate Gross Internal Area

Ground Floor = 58.2 sq m / 626 sq ft

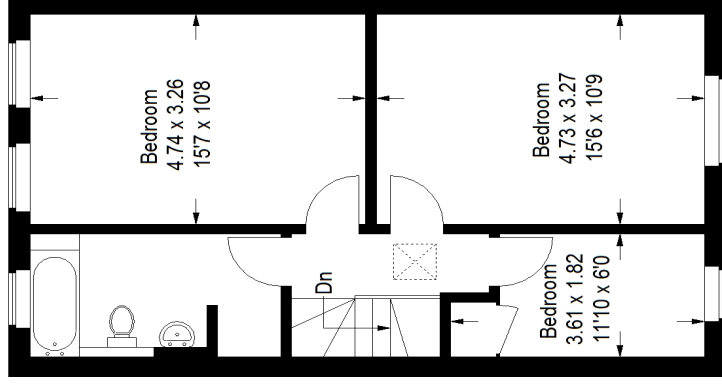
First Floor = 51.9 sq m / 559 sq ft

Second Floor = 50.6 sq m / 545 sq ft

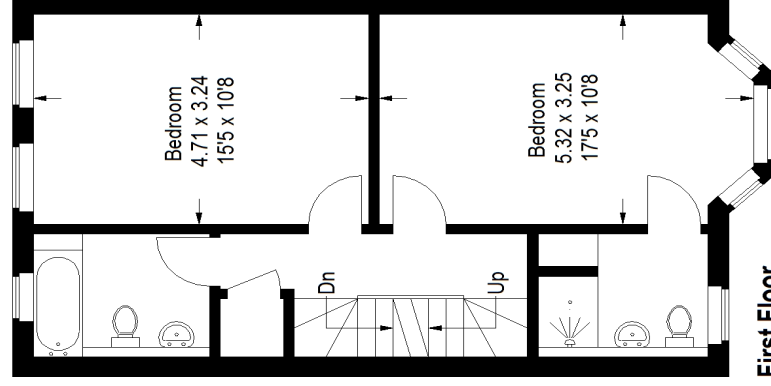
Total = 160.7 sq m / 1730 sq ft



## Second Floor



## First Floor



## Ground Floor

Copyright www.pedderproperty.com © 2021

These plans are for representation purposes only as defined by RICS - Code of Measuring Practice. Not drawn to Scale. Windows and door openings are approximate. Please check all dimensions, shapes and compass bearings before making any decisions reliant upon them.

Pedder Property Ltd trading as Pedder for themselves and for the vendor/landlord of this property whose agents they are, give notice that (1) these particulars do not constitute any part of an offer or contract, (2) all statements contained within these particulars are made without responsibility on the part of Pedder or the vendor/landlord, (3) whilst made in good faith, none of the statements contained within these particulars are to be relied upon as a statement of representation or fact, (4) any intending purchaser/tenant must satisfy him/herself by inspection or otherwise as to the correctness of each of the statements contained within these particulars, (5) the vendor/landlord does not make or give either Pedder or any person in their employment any authority to make or give representation or warranty whatsoever in relation to this property.