

Location:

Larden Hall, is a quiet road, but in an excellent position between Chiswick, Shepherds Bush and Ravenscourt Park. Acton and Wendell Park are a short walking distance as well as Chiswick.

Key points:

- Private terrace
- Built in Cabinetry by Hux London
- Bespoke kitchen by Hux London
- Bosch appliances
- Secure bike storage
- Denver Grey marble tops

Do Better:

Acton:

E acton@astonrowe.co.uk  
103-105 Churchfield Road,  
London W3 6AH  
T 020 8992 3600

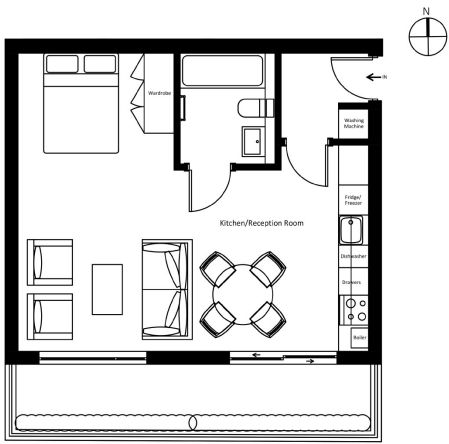
Brook Green & Hammersmith:

E brookgreen@astonrowe.co.uk  
82 Shepherds Bush Road,  
London W6 7PH  
T 020 7871 6997

Aston Rowe



Ground Floor  
Kitchen/Reception Room/Bedroom  
7.01x5.96  
23'x19'6  
  
Total Apartment GIFA  
41.82sq m  
450.2sq ft



Asking price £325,000

Larden Hall, Essex Park  
Mews,  
London W3 7RJ

An impressive  
Manhattan style  
studio






- 1 Reception rooms
- 0 Bedrooms
- 1 Bathrooms





INVESTORS ONLY! Currently rented for £1,150 PCM on a 12 month tenancy which is achieving a 3.94% rental yield! A stunning newly built Manhattan style studio situated on the ground floor of this exciting new development in Larden Hall. Located moments from the postcode borders of Shepherds Bush W12 to the east, Chiswick W4 to the south, and Acton W3 to the west, offering a diverse array of different amenities and delights. Affectionately once known as 'Soap Sud Island', due to its laundry routes serving the fine West End hotels in the 1800's, it is rich in culture, history and vibrancy. Ideal for a first time buyer or buy to let investor, this ground floor property boasts an impressive open plan kitchen/reception/

**The current owner says:**  
**The location is in a really great location for the local shops and transport links**

-  New build
-  Open plan
-  Studio
-  N/A
-  Acton park

**What's better:**

