



A SPACIOUS EXTENDED THREE/FOUR BEDROOM FAMILY HOME

Norman Crescent, Pinner, Middlesex HA5 3QL

ROBSONS

A SPACIOUS EXTENDED THREE/ FOUR BEDROOM FAMILY HOME

Norman Crescent, Pinner, Middlesex HA5 3QL

- ENTRANCE HALL • LIVING/DINING ROOM
- KITCHEN • STAIRS TO FIRST FLOOR • THREE BEDROOMS • MODERN FAMILY SHOWER ROOM • ATTRACTIVE FRONT & REAR GARDENS
- OFF STREET PARKING VIA OWN DRIVEWAY

Description

A spacious extended three/four bedroom semi-detached family home with the added benefit of a secluded rear garden, garage accessed via an own driveway with off street parking and a complete upper chain.

To the ground floor is porch leading into an entrance hallway, there is a lounge/dining room, kitchen/breakfast room and a study/fourth bedroom.

To the first floor are three bedrooms and a modern family shower room. The property also offers scope for further development (subject to planning permission).





Location

Norman Crescent is located just moments from local schools, Hatch End and Pinner high streets. Hatch End and Pinner offer a variety of boutique shops, restaurants, coffee houses and popular supermarkets.

Transport facilities include local bus links and the Metropolitan Line at Pinner tube station, with the Overground at Hatch End rail station, both providing a fast and frequent service into the heart of Central London and beyond.

The area is well served for primary and secondary schooling, children's parks/playgrounds and recreational facilities.

Additional Information

Guide Price: Price on Application

Tenure: Freehold

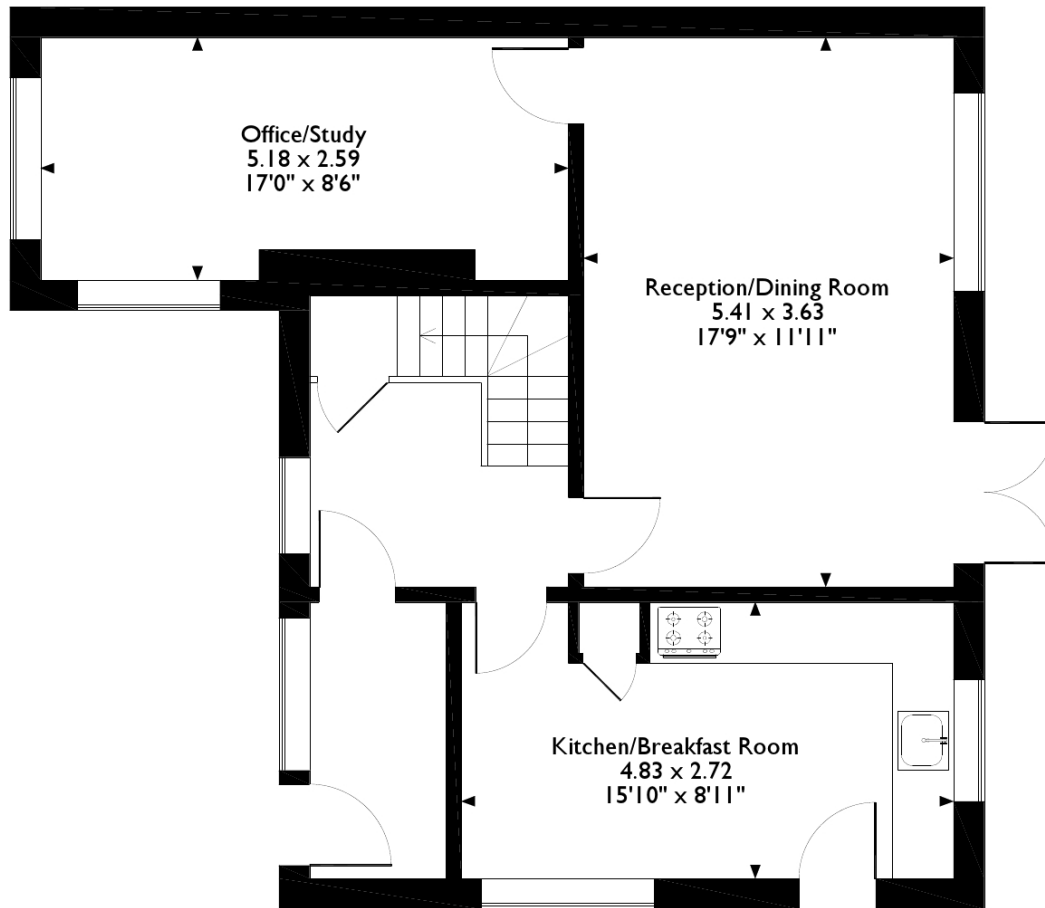
Local Authority: London Borough of Harrow

Energy Efficiency Rating: Band D

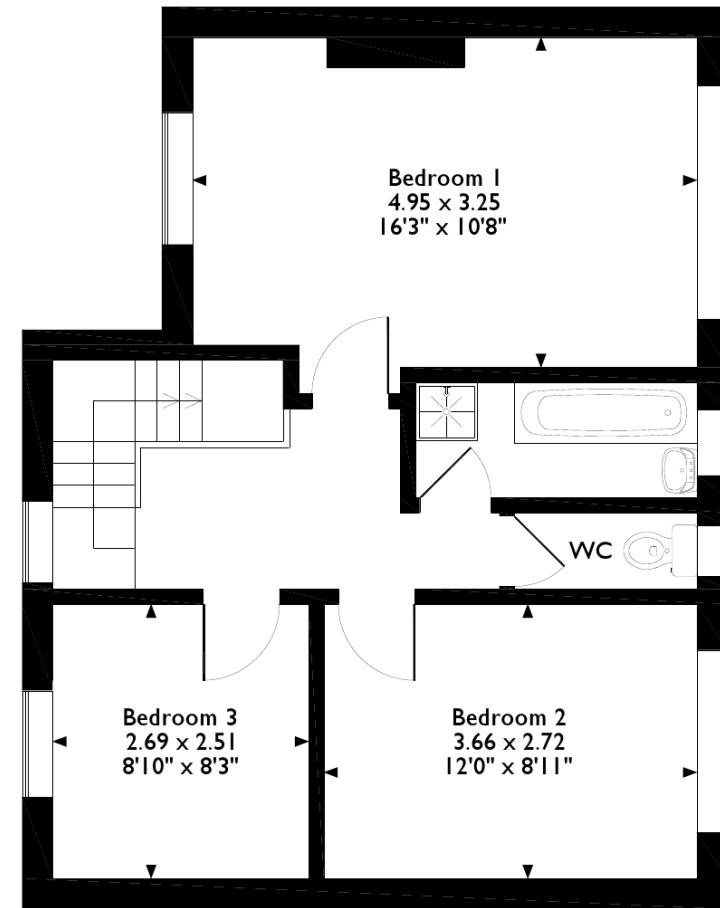
Version.1



Norman Crescent, Pinner
Approximate Gross Internal Area
Main House = 107 Sq M/1147 Sq Ft



Ground Floor



First Floor

ROBSONS

1 High Street, Pinner, Middlesex HA5 5PJ
Tel: 020 8866 8083 : charlie.lucey@robsonswb.com

www.robsonswb.com

www.the-londonoffice.co.uk
40 ST JAMES'S PLACE SW1