



Probyn Road SW2
£475,000

0208 702 9888
pedderproperty.com

pedder



In general

- Two double bedrooms
- 83-ft private garden
- Own front door
- Access to Tulse Hill station
- EPC D

In detail

Charming two double bedroom apartment with direct access onto a 83-ft private garden ideally located for Tulse Hill station.

Probyn Road is a desirable tree-lined street offering easy access into The City and West End with regular services into London Bridge and London Blackfriars via nearby Tulse Hill (0.2 miles) as well as bus connections into neighbouring Brixton, Herne Hill and Dulwich with a host of parks, green spaces and local amenities.

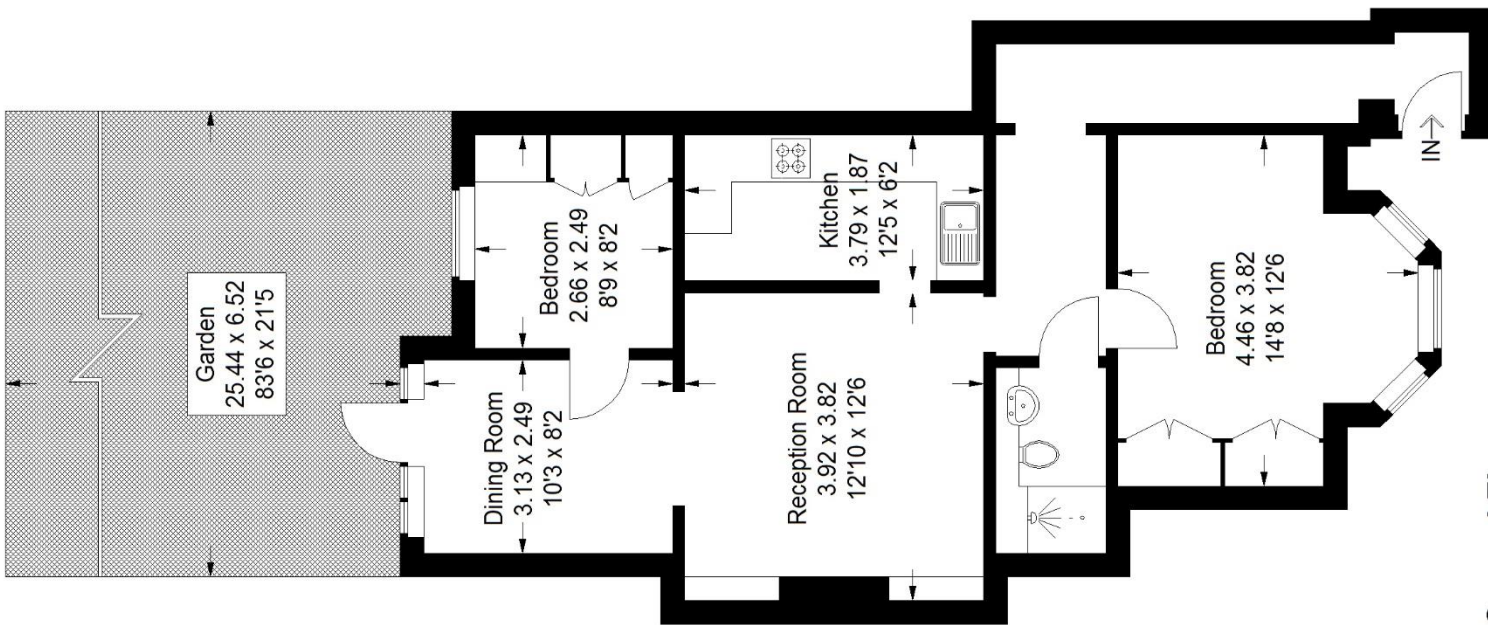
Boasting over 725 Sq Ft of internal space including a 14x12-ft master bedroom and a 20-ft reception room with a comfortable attached kitchen.

EPC D.



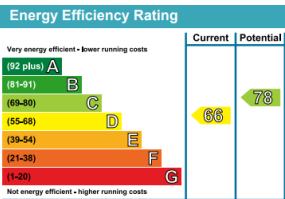
Floorplan

Probyn Road, SW2
Approximate Gross Internal Area
67.9 sq m / 731 sq ft



Ground Floor

Copyright www.pedderproperty.com © 2020
These plans are for representation purposes only as defined
by RICS - Code of Measuring Practice. Not drawn to Scale.
Windows and door openings are approximate. Please check
all dimensions, shapes and compass bearings before
making any decisions reliant upon them.



Pedder Property Ltd trading as Pedder for themselves and for the vendor/landlord of this property whose agents they are, give notice that (1) these particulars do not constitute any part of an offer or contract, (2) all statements contained within these particulars are made without responsibility on the part of Pedder or the vendor/landlord, (3) whilst made in good faith, none of the statements contained within these particulars are to be relied upon as a statement of representation or fact, (4) any intending purchaser/tenant must satisfy him/herself by inspection or otherwise as to the correctness of each of the statements contained within these particulars, (5) the vendor/landlord does not make or give either Pedder or any person in their employment any authority to make or give representation or warranty whatsoever in relation to this property.