



St Martins Court, SE27
£575,000

0208 702 9888
pedderproperty.com





In general

- Victorian mansion block
- Three double bedrooms
- Large lounge
- Fully fitted kitchen/diner
- Modern bathroom
- Stand-on balcony
- Communal garden
- Original features
- Beautifully presented throughout
- Close to excellent transport links

In detail

Charming, spacious and bright three double bedroom apartment on the top floor of this striking Victorian mansion block, on the popular Ullswater Road in the heart of West Norwood.

Boasting over 948 Sq. Ft of internal space as well as an attractive stand-on balcony and a communal courtyard garden.

Having been lovingly maintained by the current owners; there is a large fully fitted eat-in kitchen diner, a 17'1-foot reception room at the front. The long hallway leads to the modern bathroom and three good-sized bedrooms to the rear of the property and are ideal for those working from home.

St Martin's Court is brilliantly located on Ullswater Road to the west of Norwood Road and offers easy access to the bars, restaurants and amenities of SE27 as well as The City and West End via Tulse Hill station with regular Thameslink services into London Bridge, Farringdon, London Blackfriars and London St Pancras.

There are plenty of parks and green spaces nearby including Brockwell Park to the north, Dulwich and Belair Park to the east and Streatham Common to the South-West.

Early viewing highly recommended.

EPC: D | Council Tax Band: D | Lease: 153 years remaining | SC: £756 | GR: £175 | BI: £485



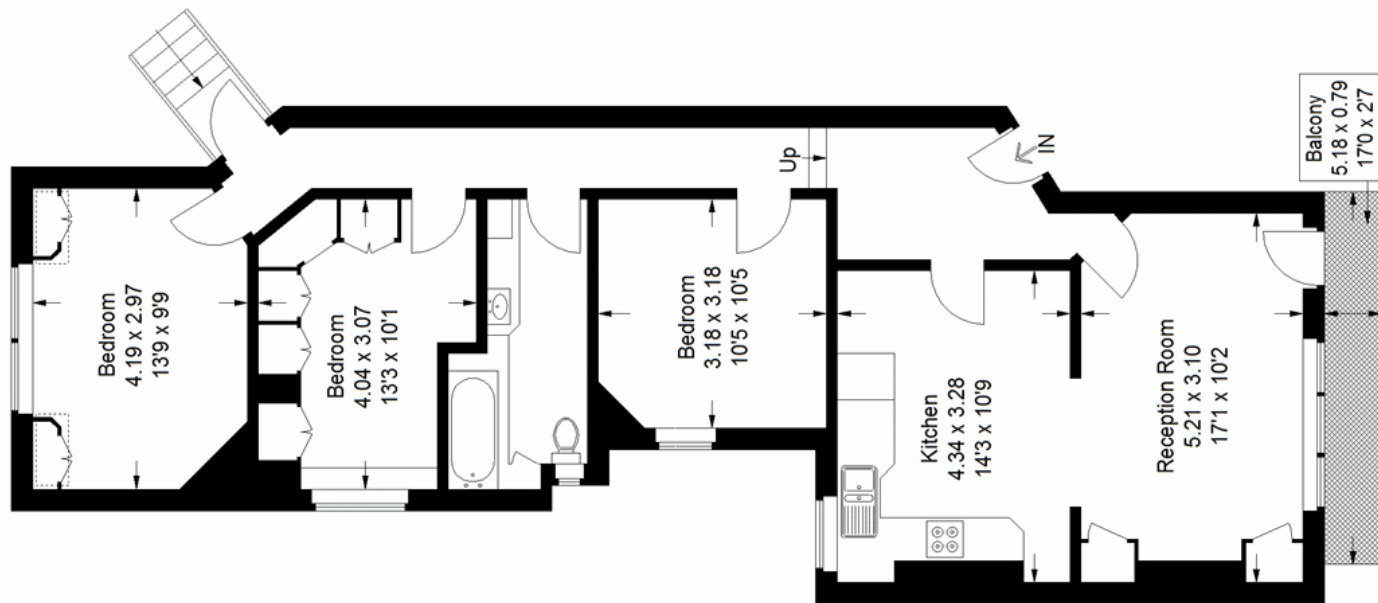
Floorplan

St Martins Court, SE27

Approximate Gross Internal Area
88.1 sq m / 948 sq ft



 = Reduced headroom
below 1.5 m / 5'0



First Floor

Copyright www.pedderproperty.com © 2022

These plans are for representation purposes only as defined by RICS - Code of Measuring Practice. Not drawn to Scale. Windows and door openings are approximate. Please check all dimensions, shapes and compass bearings before making any decisions reliant upon them.

Score	Energy rating	Current	Potential
92+	A		
81-91	B		
69-80	C		78 C
55-68	D	65 D	
39-54	E		
21-38	F		
1-20	G		

Pedder Property Ltd trading as Pedder for themselves and for the vendor/landlord of this property whose agents they are, give notice that (1) these particulars do not constitute any part of an offer or contract, (2) all statements contained within these particulars are made without responsibility on the part of Pedder or the vendor/landlord, (3) whilst made in good faith, none of the statements contained within these particulars are to be relied upon as a statement of representation or fact, (4) any intending purchaser/tenant must satisfy him/herself by inspection or otherwise as to the correctness of each of the statements contained within these particulars, (5) the vendor/landlord does not make or give either Pedder or any person in their employment any authority to make or give representation or warranty whatsoever in relation to this property.