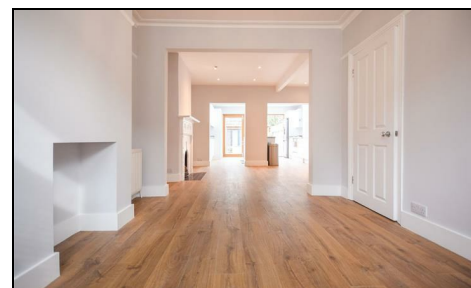
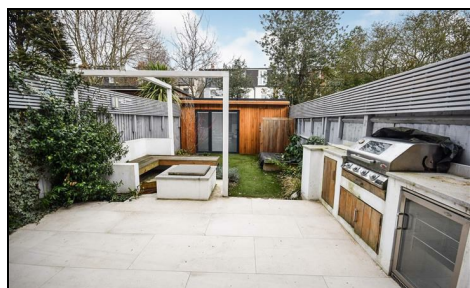


Victory Road South Wimbledon, SW19 1HN

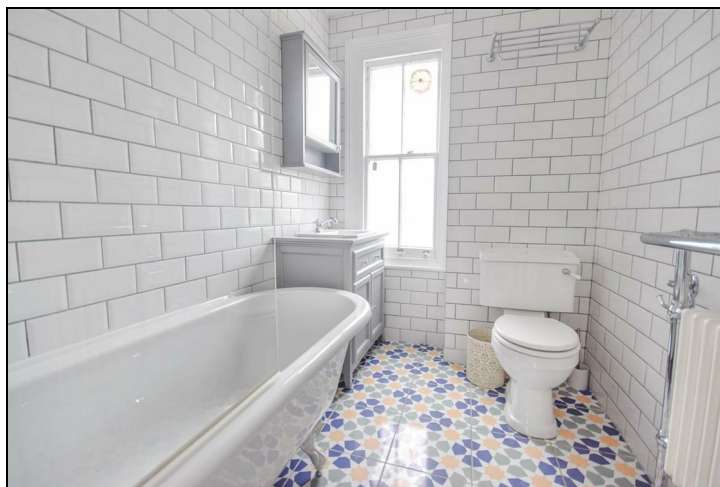
£3,000 PCM



STUNNING THREE BEDROOM, TWO BATHROOM HOUSE WITH GARDEN ROOM, located just a few minutes walk from South Wimbledon tube, and within 1 mile of Central Wimbledon. Refurbished to the ground floor with a BEAUTIFUL OPEN PLAN KITCHEN/RECEPTION with bifolding doors to a LANDSCAPED GARDEN with OUTDOOR KITCHEN, the ideal place for entertaining! Fully powered garden room with WC. Three double bedrooms, master with ensuite shower room and trendy family bathroom. MUST BE SEEN! EPC band C.

Council tax band E.

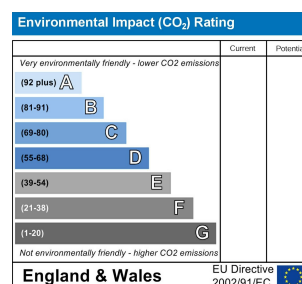
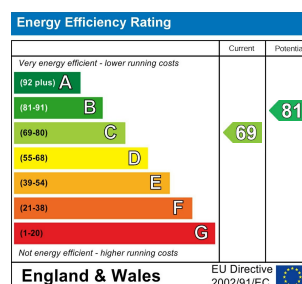
** VIDEO AVAILABLE **



- Three double bedrooms
- Two bathrooms
- Refurbished to the ground floor with stunning kitchen
- Garden room with toilet
- Great garden for entertaining

Fees payable:

- First months advance rent
- Five weeks security deposit
- No agency fees
- Council tax band E
- VIDEO AVAILABLE



Although these particulars are believed to be correct, their accuracy is not guaranteed and they do not form part of any contract.

Celebrating 30 years of successful Sales and Lettings in Merton

