



Jasmin Grove SE20
£260,000

0208 702 9333
pedderproperty.com

pedder



In general

- First floor apartment
- Well presented throughout
- Modern shower room
- Residents off street parking
- Plantation shutters

In detail

A smart one bedroom first floor property forming part of a small low rise development in Anerley.

This light and bright flat has been upgraded by the current owner to offer a pleasant space that could make for an ideal first purchase.

Noteworthy points include fitted bedroom storage, shuttered windows, a modern shower room, and a separate kitchen.

Externally there are well maintained communal grounds and residents off street parking.

Jasmine Grove is well placed for Anerley and both Penge East and West rail links. Also, amenities at the High Street and Crystal Palace Park.

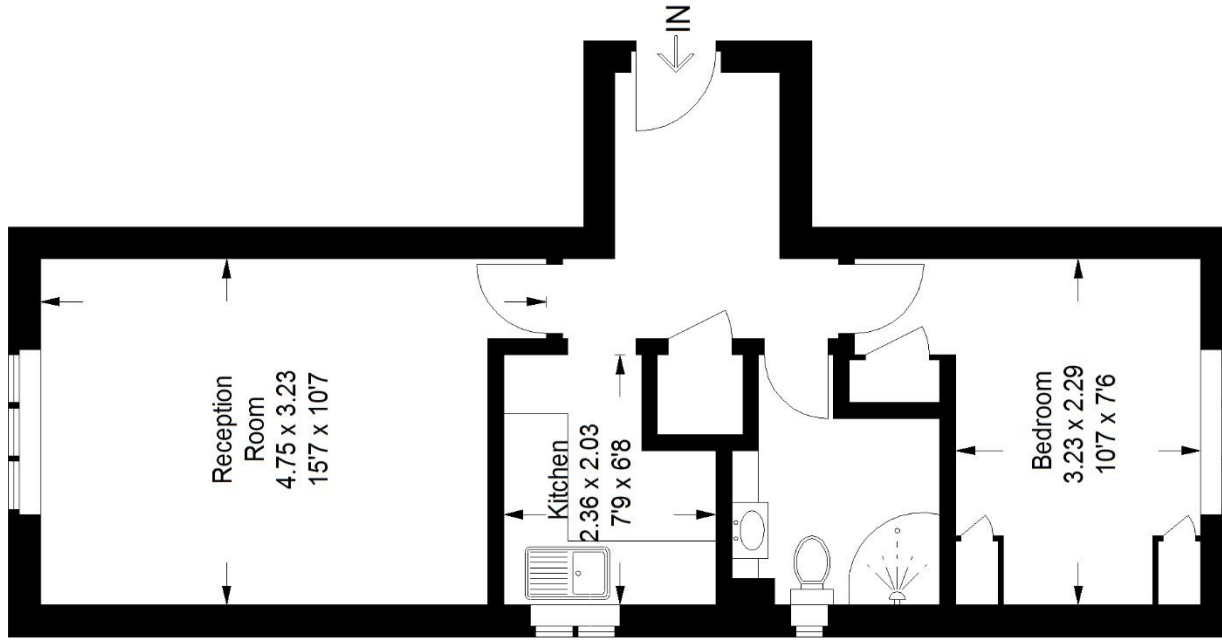
EPC: C | Council Tax Band: B | Lease: 92 years remaining | SC & pound;1,979 | GR £404.40 | BI: £143.45



Floorplan

Readman Court, SE20

Approximate Gross Internal Area
38.3 sq m / 412 sq ft



First Floor

Copyright www.pedderproperty.com © 2022
These plans are for representation purposes only
as defined by RICS - Code of Measuring Practice.
Not drawn to Scale. Windows and door openings
are approximate. Please check all dimensions,
shapes and compass bearings before making
any decisions reliant upon them.

Score	Energy rating	Current	Potential
92+	A		
81-91	B		61 B
69-80	C	72 C	
55-68	D		
39-54	E		
21-38	F		
1-20	G		

Pedder Property Ltd trading as Pedder for themselves and for the vendor/landlord of this property whose agents they are, give notice that (1) these particulars do not constitute any part of an offer or contract, (2) all statements contained within these particulars are made without responsibility on the part of Pedder or the vendor/landlord, (3) whilst made in good faith, none of the statements contained within these particulars are to be relied upon as a statement of representation or fact, (4) any intending purchaser/tenant must satisfy him/herself by inspection or otherwise as to the correctness of each of the statements contained within these particulars, (5) the vendor/landlord does not make or give either Pedder or any person in their employment any authority to make or give representation or warranty whatsoever in relation to this property.