



A 2 BEDROOM 2 BATHROOM GROUND FLOOR APARTMENT

Eastbury Avenue, Northwood, Middlesex, HA6 3JS

ROBSONS

A 2 BEDROOM 2 BATHROOM GROUND FLOOR APARTMENT

Eastbury Avenue, Northwood, Middlesex HA6 3JS

**ENTRANCE HALL • LIVING ROOM • KITCHEN •
TWO BEDROOMS THE PRINCIPAL BEDROOM
WITH ENSUITE BATHROOM • FAMILY
BATHROOM • ALLOCATED PARKING SPACE •
COMMUNAL GROUNDS**

Description

This purpose built ground floor two bedroom, two bathroom apartment is positioned on one of Northwood's most popular residential roads.

Set in gated development of just 9 apartments, there is allocated parking and communal gardens.

The property presents over 1,000 sqft of accommodation. This well appointed apartment is offered to the market with the benefit of no onward chain and a long lease.





Location

Northwood provides a range of shopping facilities including Waitrose supermarket, a variety of restaurants and other amenities with the Metropolitan Line station providing access to Baker Street and the City. There is a plethora of state and private schooling together with a wide choice of recreational facilities, which include golf courses and fitness centres. The M1, M40 and M25 motorways are also accessible.

N.B Garden shot is seasonal

Additional Information

Tenure :Leasehold

Local Authority: Three Rivers District Council

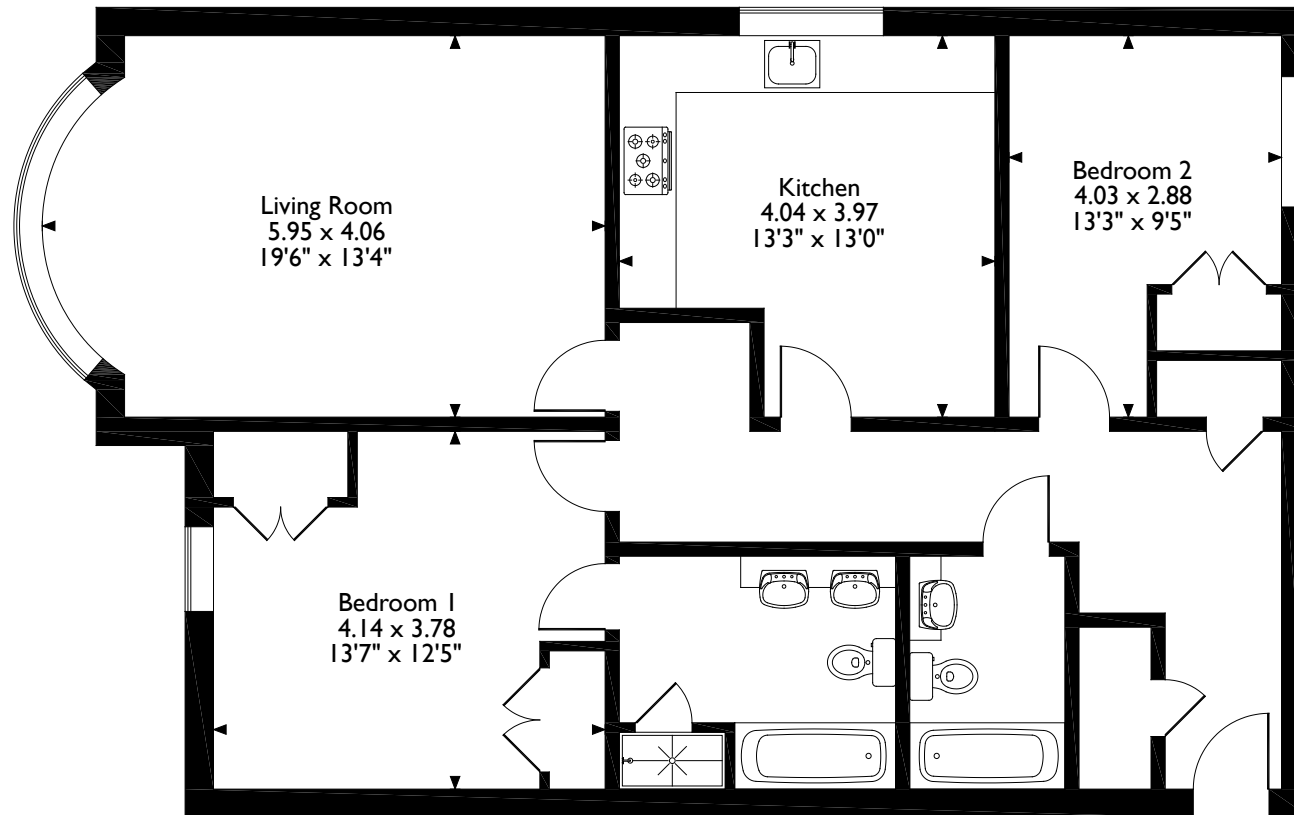
Energy Efficiency Rating: Band C



Eastbury Avenue, Northwood

Approximate Gross Internal Area

96 Sq M/1033 Sq Ft



Please note that the location of doors, windows and other items are approximate and this floorplan is to be used for illustrative purposes only. Unauthorized reproduction is prohibited.

ROBSONS

7 Clive Parade, Northwood, Middlesex HA6 2QF
Tel: 01923 835355 northwood@robsonswb.com

www.robsonswb.com

www.the-londonoffice.co.uk
40 ST JAMES'S PLACE SW1

Important notice: Robsons, their clients and any joint agents give notice that 1: They are not authorised to make or give any representations or warranties in relation to the property either here or elsewhere, either on their own behalf or on behalf of their client or otherwise. They assume no responsibility for any statement that may be made in these particulars. These particulars do not form part of any offer or contract and must not be relied upon as statements or representations of fact. 2: Any areas, measurements or distances are approximate. Plot sizes and dimensions are taken from Promap and are approximate. The text, photographs and plans are for guidance only and are not necessarily comprehensive. It should not be assumed that the property has all necessary planning, building regulation or other consents and Robsons have not tested any services, equipment or facilities. Purchasers must satisfy themselves by inspection or otherwise.