



Bowditch, Deptford

Spanning an impressive 128.7sqm (1,386sqft) across two floors, this spacious garden-maisonette offers versatile accommodation in a rapidly gentrifying corner of riverside Deptford. Pelican House sits moments from the banks of the Thames surrounded by the green open spaces of Pepys Park and the leafy Aragon Gardens. The nearby Grand Canal Avenue hosts a plethora of new retailers including bars, eateries, salons a Tesco and a Co-Op, which have dramatically increased the popularity of this little known neighbourhood in recent years. This property enjoys five double bedrooms, a south facing living room and a separate kitchen diner. The private south-west facing garden offers an afternoon sun-trap in the summer months, while a riverside stroll will take you to Surrey Quays one way and Greenwich in the other.

- Five Double Bedrooms
- Naturally Bright Living Room
- Kitchen / Diner
- South-West Facing Garden
- 128.7sqm (1,386sqft)
- Potential 10% PA Rental ROI

South East London
020 7231 5050

Email southeast@o-j.co.uk

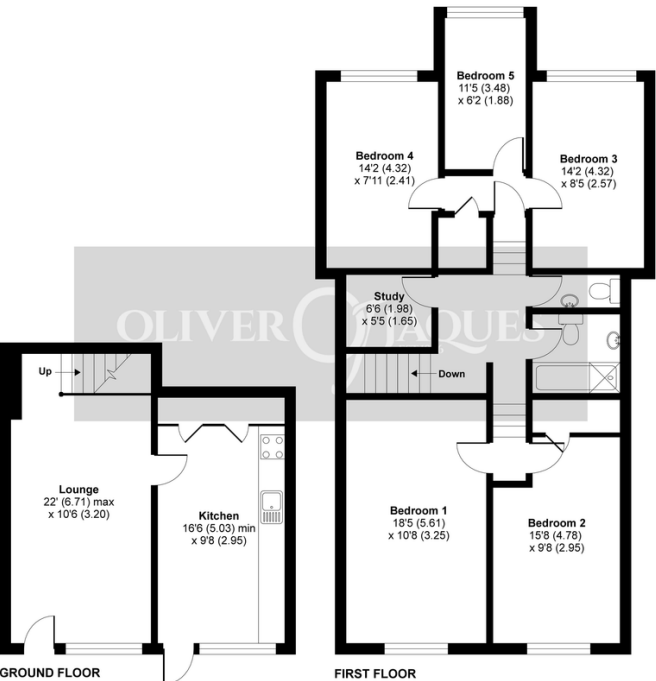
229-231 Lower Road, London, SE16 2LW

web www.o-j.co.uk

Every care has been taken with the preparation of this brochure but it is for general guidance only and complete accuracy cannot be guaranteed. If there is any point, which is of importance professional verification should be sought. This brochure does not constitute a contract or part of a contract. We are not qualified to verify tenure of property. Prospective purchasers should seek clarification from their solicitor or verify the tenure of this property for themselves by visiting www.gov.uk/government/organisations/land-registry. The mention of any appliances, fixtures or fittings does not imply they are in full working order. Photographs are reproduced for general information and it cannot be inferred that any item shown is included in the sale. All dimensions are approximate. Walking times are taken from Google Maps and measured from the centre of the postcode, which may differ from the individual property. We always refer prospective buyers to our panelled conveyancers and Chancery Mortgage Services Ltd. It is your decision whether to use them. Should you decide to do so you should know that we could receive a referral fee from them for recommending them to you.

Pelican House, Bowditch, London, SE8

Approximate Area = 1386 sq ft / 128.7 sq m
For identification only - Not to scale



Certified Property Measurer Floor plan produced in accordance with RICS Property Measurement Standards incorporating International Property Measurement Standards (IPMS2 Residential). © richrecom 2021. Produced for Oliver Jacques - REF: 729609

