

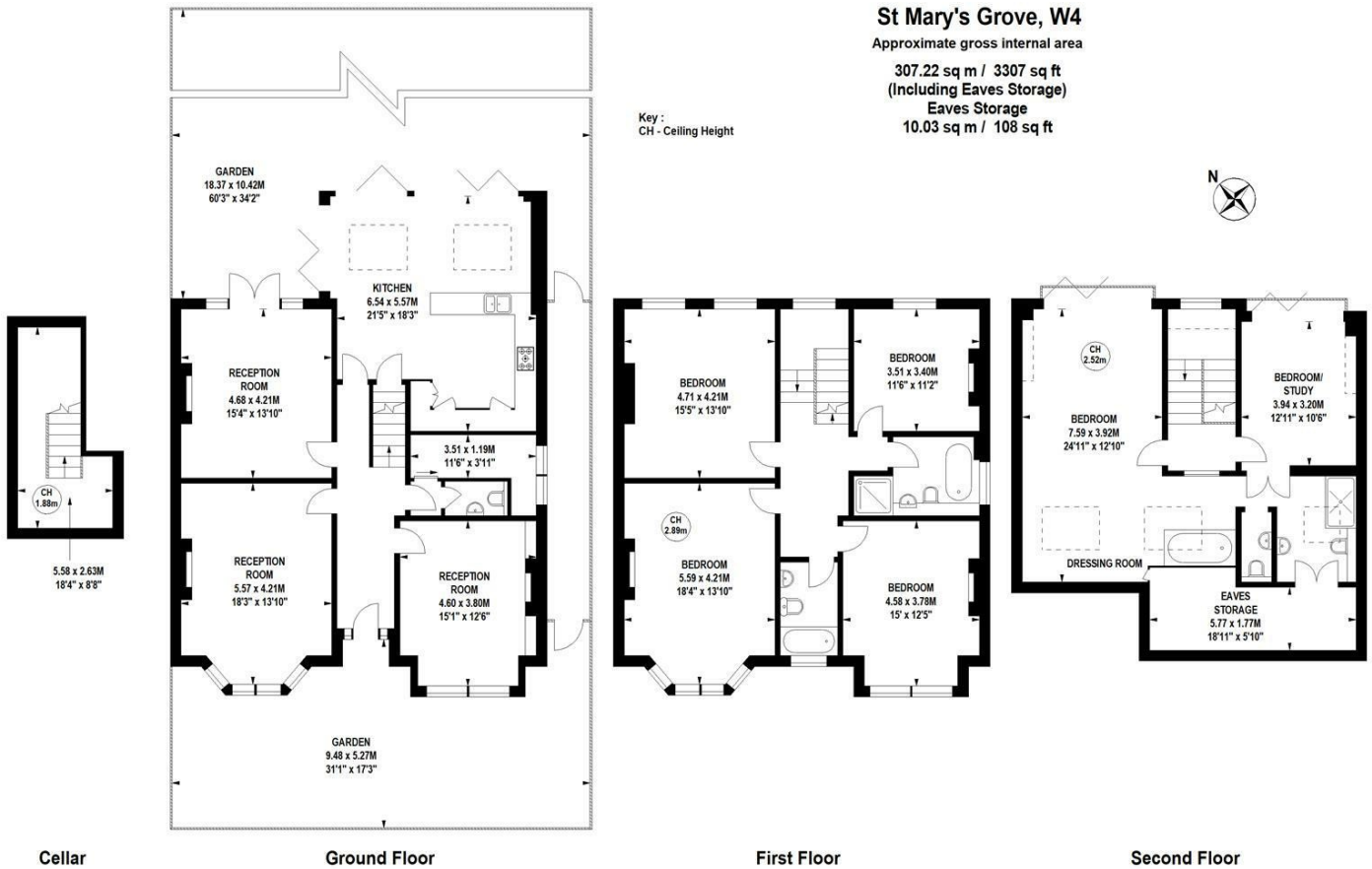


## St. Marys Grove, London, W4 3LN

AVAILABLE NOW FOR SHORT OR LONG LET - An impressive and rarely available detached double fronted period home located on this popular residential road in the Grove Park area of Chiswick. This exceptional family home offers in excess of 3300sqft of accommodation comprising a feature tiled entrance hall, 18' bay fronted reception room, two further generous reception rooms, fully integrated kitchen/dining room with bi-fold doors onto a stunning mature 60'x34' walled garden, huge master bedroom suite with dressing room and luxury ensuite, five further double bedrooms, two further bathrooms, utility room, cloakroom, eaves storage, cellar, side access with covered storage, pretty front garden, host or period features and high ceilings throughout. St Mary's Grove is perfectly located within a short walk of the River, Chiswick House and Grounds and Chiswick High Road's extensive facilities whilst also being in the catchment of OFSTED rated 'outstanding' Grove Park and Strand on the Green schools. Transport links include Gunnersbury and Chiswick stations, local bus routes and the A4/M4 for routes in and out of London. Hounslow Council Band G. EPC - G - Available Now

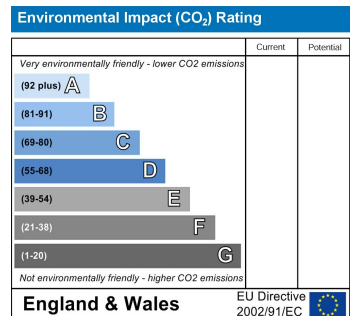
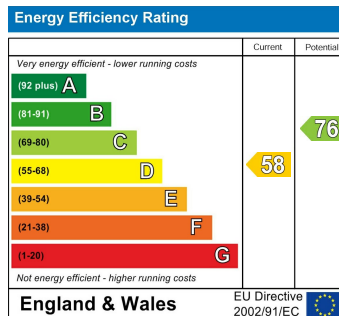
**£8,000 Per Calendar Month**

- Available Now
- Detached double fronted house
- 3300 sqft of accommodation
- Four reception rooms with period features
- Six beds/three baths
- Popular residential street
- Lovely 60' walled garden
- Short or Long Let



Not to scale, for guidance only and must not be relied upon as a statement of fact.  
All measurements and areas are approximate only

Tenure - Freehold  
Local Authority - Hounslow  
Council Tax - Band G



5-7 Turnham Green Terrace, Chiswick, London, W4 1RG

Tel 020 8747 8800

E-mail [lettings@whitmanandco.com](mailto:lettings@whitmanandco.com)

Website [www.whitmanandco.com](http://www.whitmanandco.com)

PrimeLocation.com

Zoopla.co.uk

rightmove

OnTheMarket.com

MISREPRESENTATION ACT 1967

Whitman & Co. for themselves and for the vendors give notice that these particulars do not constitute any part of, an offer of contract. All statements contained in these particulars are made without responsibility on the part of Whitman & Co. or the vendor. None of the statements contained in these particulars is to be relied upon as statements or representations of facts. Any intending purchaser must satisfy himself by inspection or otherwise as to the correctness of each of the statements contained in these particulars. The vendor does not make or give, and neither Whitman & Co. or any person in their employment has any authority to make or give, any representation or warranty whatever in relation to the property.