



Pageant Crescent, Rotherhithe

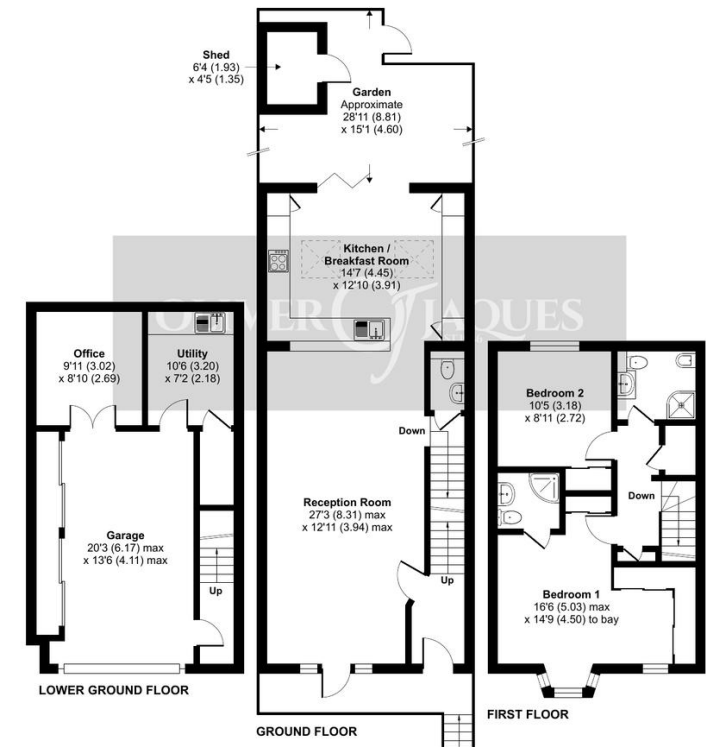
Asking Price £1,600,000 Freehold

OLIVER  JACQUES
EST. 1986



Pageant Crescent, London, SE16

Approximate Area = 1694 sq ft / 157.4 sq m (includes garage)
 Outbuilding = 28 sq ft / 2.6 sq m
 Total = 1722 sq ft / 160 sq m
 For identification only - Not to scale



RICS Certified Property Measurer Floor plan produced in accordance with RICS Property Measurement Standards incorporating International Property Measurement Standards (IPMS2 Residential). © richcom 2022. Produced for Oliver Jacques. REF: 833297

Pageant Crescent, Rotherhithe

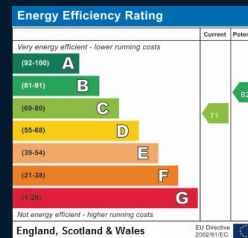
Occupying an enviable riverside location on the sought after Pageant Crescent, this 1,722sqft town house enjoys direct views across the Thames from all the front windows. The property has been lovingly kept and sympathetically extended to create a naturally bright open-planned living areas with clearly defined spaces for living and dining. The rear kitchen enjoys fully glazed bi-folding doors and skylight windows which fill the space with light. Upstairs contains two double bedrooms and two bathrooms with access to the loft space. Parking is provided by way of a private drive and integrated garage on the lower floor, which also houses the utility room and a separate office / study room.

- River Facing Townhouse
- South West Facing Rear Garden
- Private Gated Road
- High Decorative Order
- Integrated Garage and Drive
- 160sqm (1,722sqft)

South East London
 020 7231 5050

Email southeast@o-j.co.uk

229-231 Lower Road, London, SE16 2LW



web www.o-j.co.uk

Every care has been taken with the preparation of this brochure but it is for general guidance only and complete accuracy cannot be guaranteed. If there is any point, which is of importance professional verification should be sought. This brochure does not constitute a contract or part of a contract. We are not qualified to verify tenure of property. Prospective purchasers should seek clarification from their solicitor or verify the tenure of this property for themselves by visiting www.gov.uk/government/organisations/land-registry. The mention of any appliances, fixtures or fittings does not imply they are in full working order. Photographs are reproduced for general information and it cannot be inferred that any item shown is included in the sale. All dimensions are approximate. Walking times are taken from Google Maps and measured from the centre of the postcode, which may differ from the individual property. We routinely refer clients to Chancery Mortgage Services Ltd. It is your decision whether you choose to deal with Chancery Mortgage Services Ltd. In making that decision, you should know that we receive an annual payment benefits from Chancery Mortgage Services Ltd, equating to approximately £220 per referral

- **Tenure:** Freehold
- **Ground Rent:** £15pa
- Fixed
- **Service Charge:** £1,500 pa
- **Lease Expires:** n/a
- **Shared Ownership:** No
- **Council Tax Band:** Southwark G
- £2,657.57