



Stamford Court, London, W6 0XE

£465,000

WHITMAN & CO.

SALES · LETTINGS · COMMERCIAL

- Light and spacious two-bed flat
- Off-street parking and bike storage
- Close to numerous amenities
- Top floor mansion flat with far reaching views
- Lift access and portorage
- No chain

Tenure - Leasehold
 Lease Length - 84 Years remaining
 Ground rent - £250 pa
 Service Charge - £3800 pa
 Local Authority - Hammersmith and Fulham
 Council Tax - Band F

THE PROPERTY

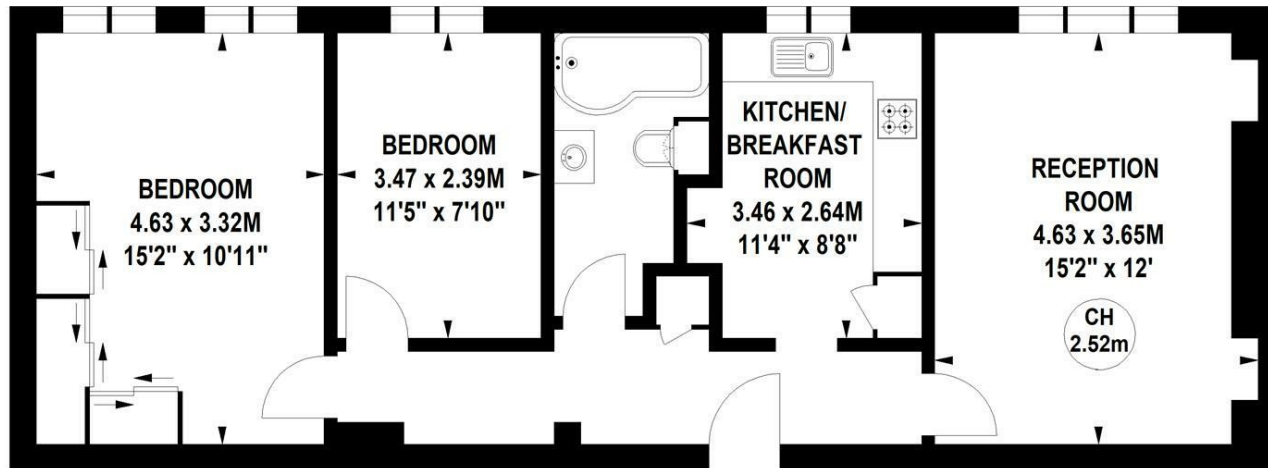
A light and spacious two bedroom top floor mansion flat with far reaching views further benefitting from lift access, off street parking, portorage and close proximity to numerous amenities. Comprising two double bedrooms, 15' reception room, white bathroom suite, 11' kitchen/breakfast room, polished hardwood floors, off street parking and bike storage, portorage and automatic lifts. Ideally situated within close proximity of Stamford Brook tube station, Chiswick High Road and King Street's cafes, shopping and restaurant facilities and Ravenscourt Park. No chain.

Stamford Court, W6

Approximate gross internal area

63.92 sq m / 688 sq ft

Key :
 CH - Ceiling Height



Sixth Floor

Not to scale, for guidance only and must not be relied upon as a statement of fact.
 All measurements and areas are approximate only

SITUATION

5-7 Turnham Green Terrace, Chiswick, London, W4 1RG
 Tel 020 8747 8800

E-mail sales@whitmanandco.com
 Website www.whitmanandco.com