

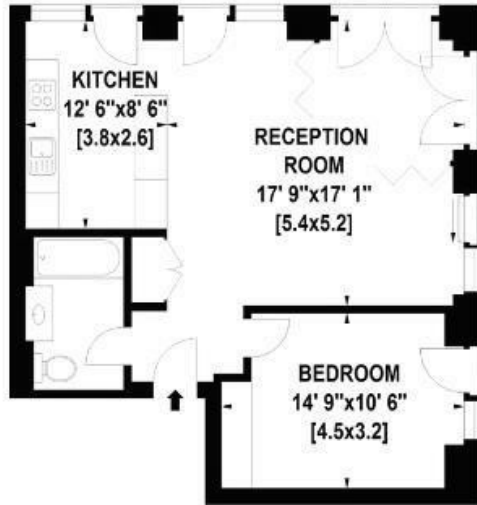


## B111 New Union Square, Capital Building, Embassy Gardens, £800

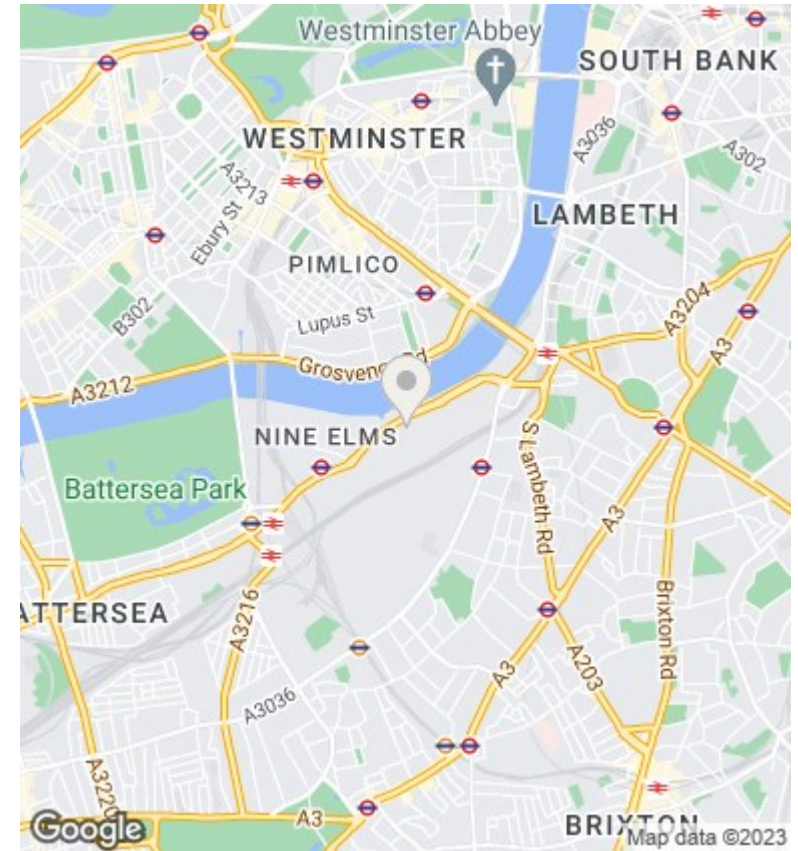
- 24H CONCIERGE
- SWIMMING POOL
- WALKING DISTANCE TO BATTERSEA POWER STATION AND VAUXHALL STATIONS
- VIDEO VIEWING AVAILABLE
- CINEMA
- ON SITE WAITROSE
- GYM/ SPA
- MEETING ROOMS
- FULLY FURNISHED

## CAPITAL BUILDING, SW11

Approximate Gross Internal Area: 61 Sq. metres  
657 Sq. feet



ELEVENTH FLOOR



## Directions

## Viewings

Viewings by arrangement only.  
Call 02077225022 to make an appointment.

## Council Tax Band

## EPC Rating:

Energy Efficiency Rating		
	Current	Potential
<i>Very energy efficient - lower running costs</i>		
(92 plus) <b>A</b>		
(81-91) <b>B</b>		
(69-80) <b>C</b>		
(55-68) <b>D</b>		
(39-54) <b>E</b>		
(21-38) <b>F</b>		
(1-20) <b>G</b>		
<i>Not energy efficient - higher running costs</i>		
<b>England &amp; Wales</b>	EU Directive 2002/91/EC	